

TRANSFORMATION D'UN ANCIEN HÔTEL EN IMMEUBLE DE 14 APPARTEMENTS

Place de la Gare, 1
5530 Yvoir

APPARTEMENT 12 / 2 CHAMBRES

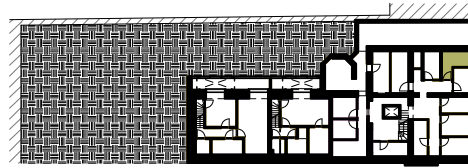
SURFACE BRUTE TOTALE 98 m²

SURFACE UTILE TOTALE 84,8 m²

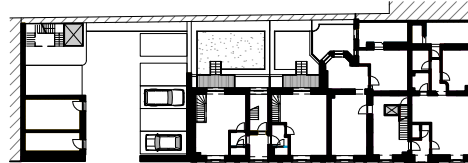
SURFACE NETTE

- | | |
|-------------------------------------|---------------------------|
| 1. HALL (1,6x1,3) | 2,1 m ² |
| 2. SEJOUR (8,6x4,5) | 38,7 m ² |
| 3. WC (1,4x0,9) | 1,3 m ² |
| 4. HALL DE NUIT (1,04x3,29) | 3,4 m ² |
| 5. CHAMBRE 1 (0,6x2,77)+(2,66x3,83) | 11,8 m ² |
| 6. CHAMBRE 2 (0,6x2,77)+(2,76x3,83) | 12,2 m ² |
| 7. BUANDERIE (2,53x1,3) | 3,2 m ² |
| 8. SALLE DE BAIN (2,31x1,3) | 3,5 m ² |
| SURFACE NETTE TOTALE | 76,2 m² |
| 9. BALCON | 13,9 m ² |
| SURFACE TOTALE BALCON | 13,9 m² |
| 10. CAVEVETTE PRIVATIVE | 6,5 m ² |

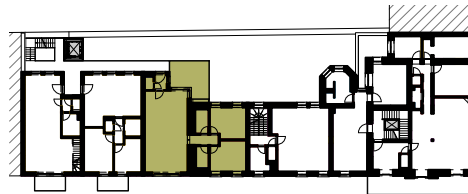
SITUATION



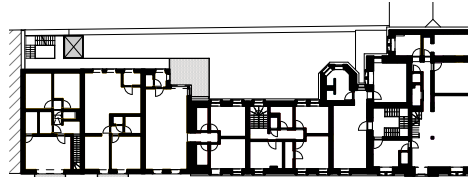
PLAN DU SOUS-SOL



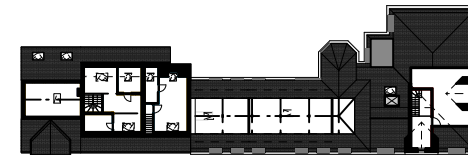
PLAN DU REZ-DE-CHAUSSEE



PLAN DU R+1



PLAN DU R+2

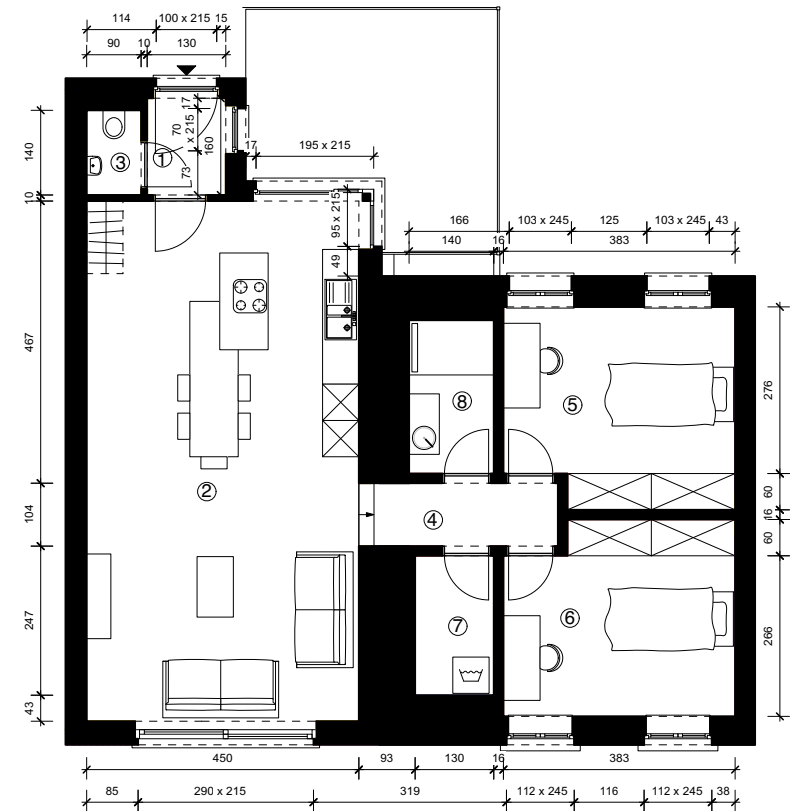


PLAN DU R+3



ELEVATION

PLANS



PLAN DU R+1 -ECH 1:150