

TRANSFORMATION D'UN ANCIEN HÔTEL EN IMMEUBLE DE 14 APPARTEMENTS

Place de la Gare, 1
5530 Yvoir

APPARTEMENT 14 / 3 CHAMBRES

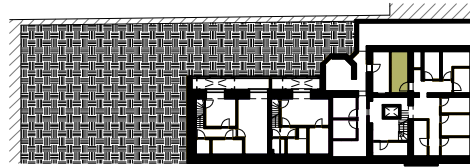
SURFACE BRUTE TOTALE 137,2 m²

SURFACE UTILE TOTALE 113,2 m²

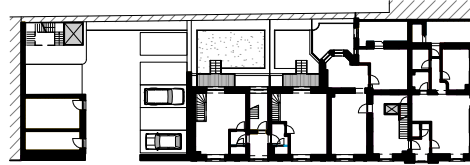
SURFACE NETTE

1. HALL (1,6x1,3)	2,1 m ²
2. SEJOUR (8,6x4,5)	38,7 m ²
3. WC (1,4x0,9)	1,3 m ²
4. HALL DE NUIT (1,04x3,29)	3,4 m ²
5. CHAMBRE 1 (0,6x2,77)+(2,66x3,83)	11,8 m ²
6. CHAMBRE 2 (0,6x2,77)+(2,76x3,83)	12,2 m ²
7. BUANDERIE (2,53x1,3)	3,2 m ²
8. SALLE DE BAIN 1 (2,31x1,3)	3,5 m ²
9. CHAMBRE 3 (0,54x1,04)+(2,85x3)+(2,96x3)	19,6 m ²
10. SALLE DE BAIN 2 (3,8x1,4)	5,3 m ²
SURFACE NETTE TOTALE	101,1 m²
11. BALCON	13,9 m ²
SURFACE TOTALE BALCON	15,4 m²
12. CAVEVETTE PRIVATIVE	8,3 m ²
13. GRENIER	30,9 m ²

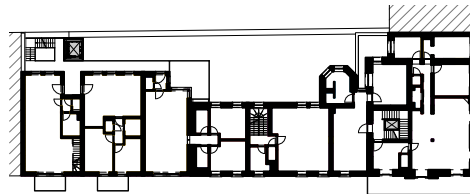
SITUATION



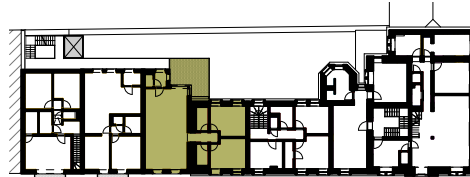
PLAN DU SOUS-SOL



PLAN DU REZ-DE-CHAUSSEE



PLAN DU R+1



PLAN DU R+2

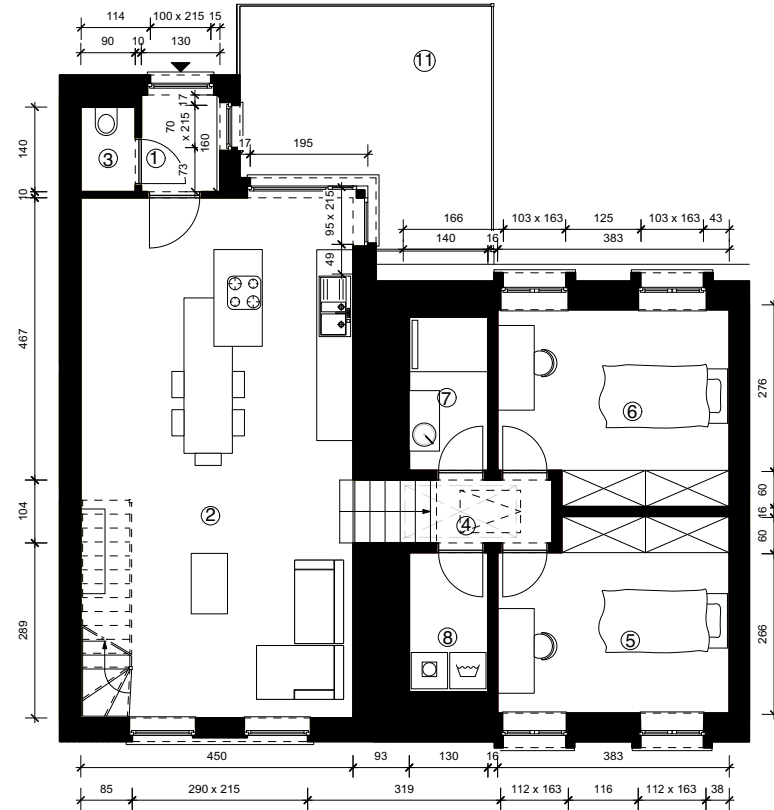


PLAN DU R+3

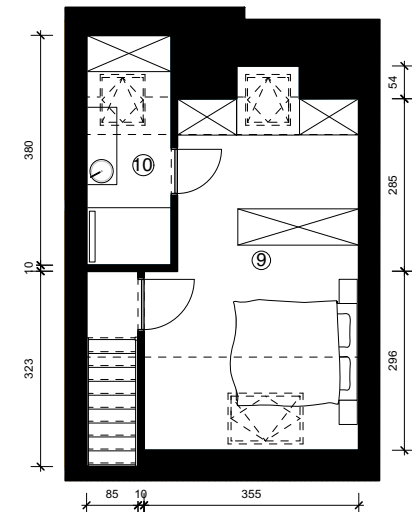
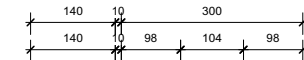


ELEVATION

PLANS



PLAN DU R+2 -ECH 1:150



PLAN DU R+3 -ECH 1:150