

TRANSFORMATION D'UN ANCIEN HÔTEL EN IMMEUBLE DE 14 APPARTEMENTS

Place de la Gare, 1
5530 Yvoir

APPARTEMENT 13 / 2 CHAMBRES

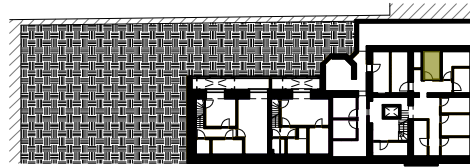
SURFACE BRUTE TOTALE 122 m²

SURFACE UTILE TOTALE 104,3 m²

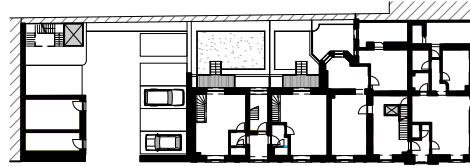
SURFACE NETTE

1. HALL (1,4x2)	2,8 m ²
2. SEJOUR (1,4x3,98)+(2,92x6,08) +(2,28x0,9)	26 m ²
3. CUISINE (3,6x2,73)	9,8 m ²
4. HALL DE NUIT 1 (0,9x1,35)	1,2 m ²
5. WC (0,9x1,35)	1,2 m ²
6. CHAMBRE 1 (3,6x3,25)	11,7 m ²
7. SALLE DE BAIN 1 (1,9x1,8)	3,4 m ²
8. HALL DE NUIT 2 (2,91x2,48)	10,1 m ²
9. CHAMBRE 2 (1,9x1,48)+(1,86x2,98)	13,9 m ²
10. SALLE DE BAIN 2 (2,724x2,5)	6,8 m ²
11. GRENIER (1,86x3)	5,6 m ²
SURFACE NETTE TOTALE	92,5 m²
12. BALCON	4,9 m ²
SURFACE TOTALE BALCON	15,4 m²
13. CAVEVETTE PRIVATIVE	5,2 m ²

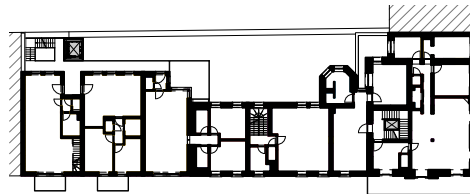
SITUATION



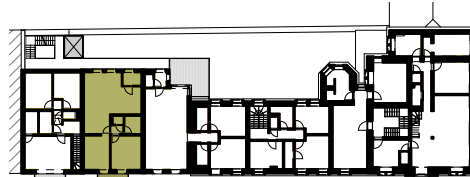
PLAN DU SOUS-SOL



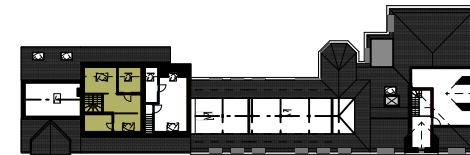
PLAN DU REZ-DE-CHAUSSEE



PLAN DU R+1



PLAN DU R+2

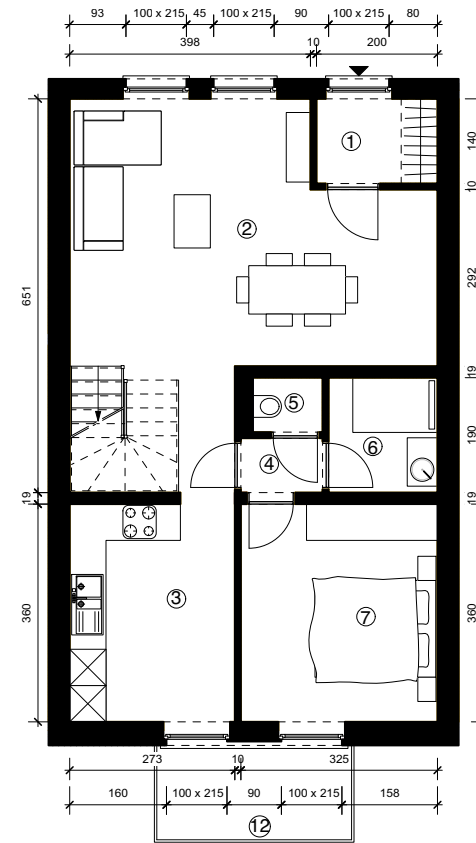


PLAN DU R+3

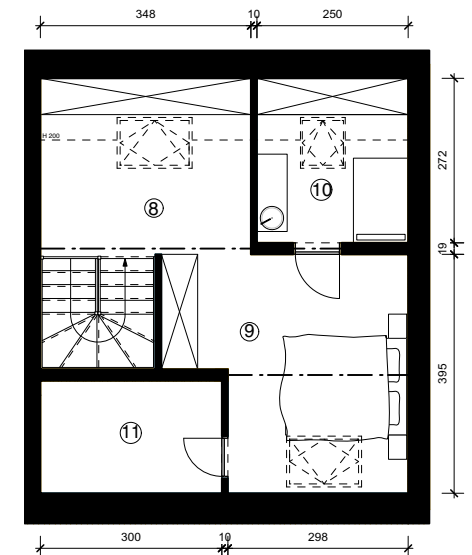


ELEVATION

PLANS



PLAN DU R+2 -ECH 1:150



PLAN DU R+3 -ECH 1:150