

# TRANSFORMATION D'UN ANCIEN HÔTEL EN IMMEUBLE DE 14 APPARTEMENTS

Place de la Gare, 1  
5530 Yvoir

## APPARTEMENT 01 / 2 CHAMBRES

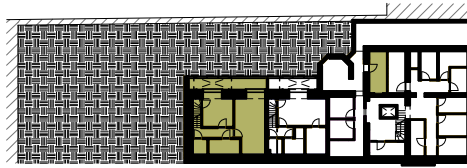
**SURFACE BRUTE TOTALE** 111,7 m<sup>2</sup>

**SURFACE UTILE TOTALE** 83,5 m<sup>2</sup>

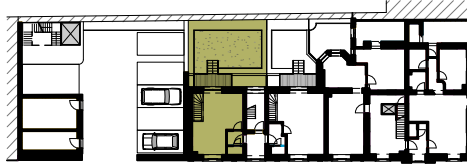
### SURFACE NETTE

1. HALL (1,5x1,7)	2,6 m <sup>2</sup>
2. SEJOUR (3,87x5,4)+(3,58x2,66)	27,2 m <sup>2</sup>
3. WC (0,9x1,7)	1,5 m <sup>2</sup>
4. HALL DE NUIT (1,01x4,25)	4,3 m <sup>2</sup>
5. CHAMBRE 1 (2,96x3,26)	10,9 m <sup>2</sup>
6. CHAMBRE 2 (1,77x2,5)+(4,12x3,21)	19 m <sup>2</sup>
7. SALLE DE BAIN (1,61x3,3)	5,3 m <sup>2</sup>
8. BUANDERIE (1,61x1,5)	2,4 m <sup>2</sup>
<b>SURFACE NETTE TOTALE</b>	<b>73,2 m<sup>2</sup></b>
9. BALCON (1,38x3,95)	5,4 m <sup>2</sup>
10. TERRASSE ENTERREE (1,21x8,24)	10 m <sup>2</sup>
<b>TOTAL BALCON ET TERRASSE</b>	<b>15,4 m<sup>2</sup></b>
11. JARDIN	47 m <sup>2</sup>
12. CAVEVETTE PRIVATIVE	8,3 m <sup>2</sup>

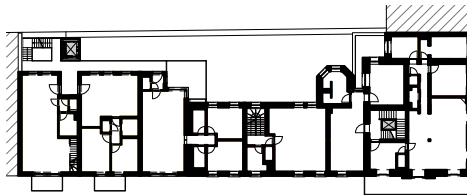
## SITUATION



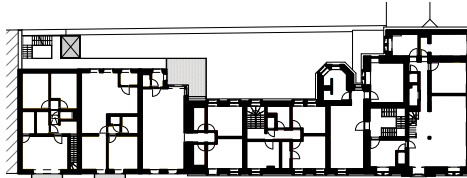
PLAN DU SOUS-SOL



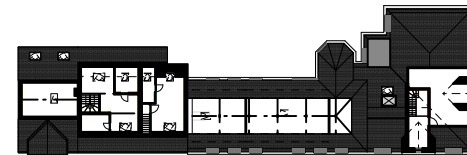
PLAN DU REZ-DE-CHAUSSEE



PLAN DU R+1



PLAN DU R+2

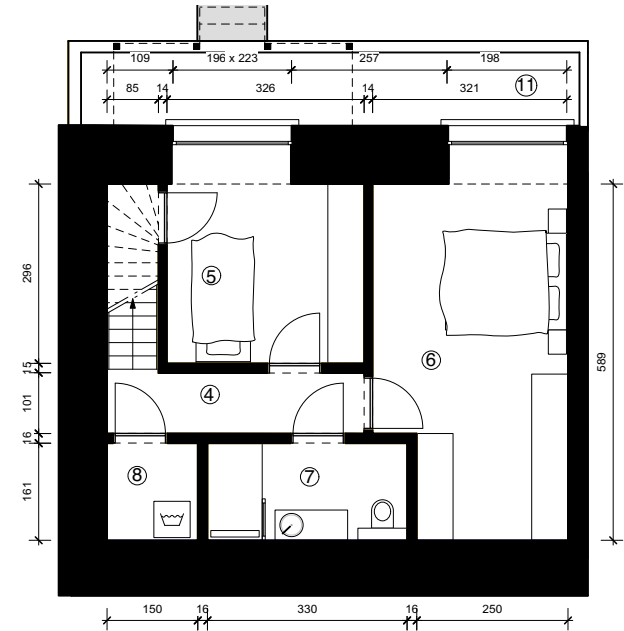


PLAN DU R+3

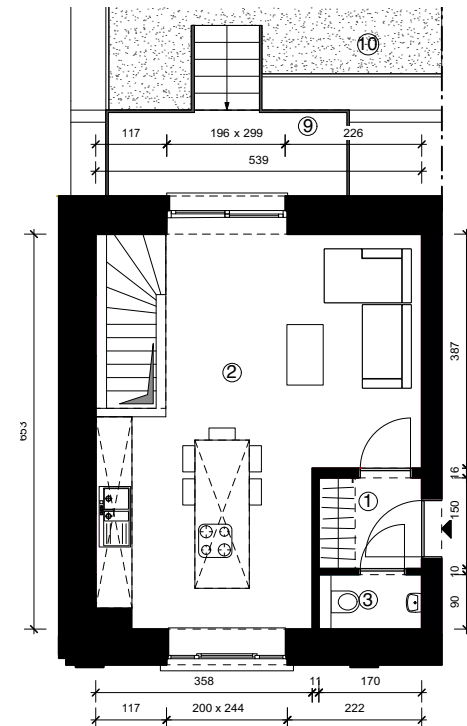


ELEVATION

## PLANS



PLAN DU SOUS-SOL -ECH 1:150



PLAN DU REZ-DE-CHAUSSEE -ECH 1:150