

# TRANSFORMATION D'UN ANCIEN HÔTEL EN IMMEUBLE DE 14 APPARTEMENTS

Place de la Gare, 1  
5530 Yvoir

## APPARTEMENT 09 / 2 CHAMBRES

SURFACE BRUTE  
145,8m<sup>2</sup>

SURFACE UTILE  
117,5 m<sup>2</sup>

SURFACE NETTE

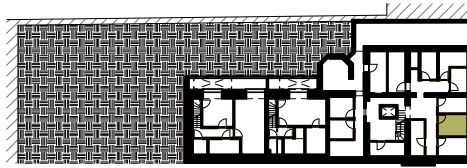
- 1. HALL (1,74x2,81)+(1,18x0,9) 9,4 m<sup>2</sup>
- 2. SEJOUR (5,94x6,18)+(1,68x3,9) 44,1m<sup>2</sup>
- 3. WC (1,3x0,9) 1,4 m<sup>2</sup>
- 4. BUANDERIE (2,32x1,33) 2,1 m<sup>2</sup>
- 5. HALL DE NUIT (1,1x2,11)+(4,14x0,9) 6 m<sup>2</sup>
- 6. CHAMBRE 1 (3,4x3,9) 13 m<sup>2</sup>
- 7. CHAMBRE 2 (2,08x0,9)+(2,4x3,9) 11,5 m<sup>2</sup>
- 8. SALLE DE BAIN 1 (2,38x2,91) 6,7 m<sup>2</sup>
- 9. RANGEMENT (1,03x1,07) 1,1 m<sup>2</sup>
- 10. MEZZANINE (1,03x1,07) 7,1 m<sup>2</sup>

**SURFACE NETTE TOTALE 102,4 m<sup>2</sup>**

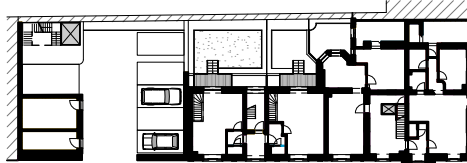
GRENIER 30,3 m<sup>2</sup>

CAVE 7,3 m<sup>2</sup>

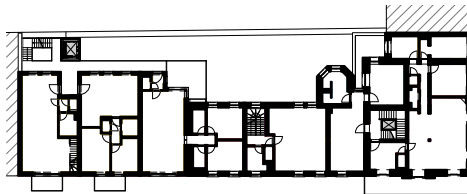
### SITUATION



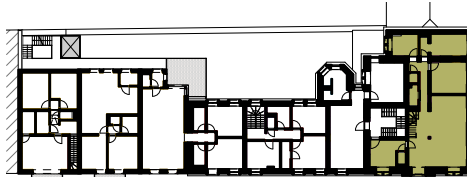
PLAN DU SOUS-SOL



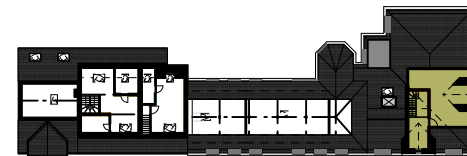
PLAN DU REZ-DE-CHAUSSEE



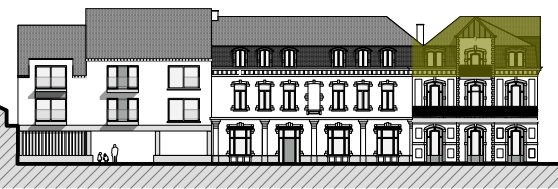
PLAN DU R+1



PLAN DU R+2

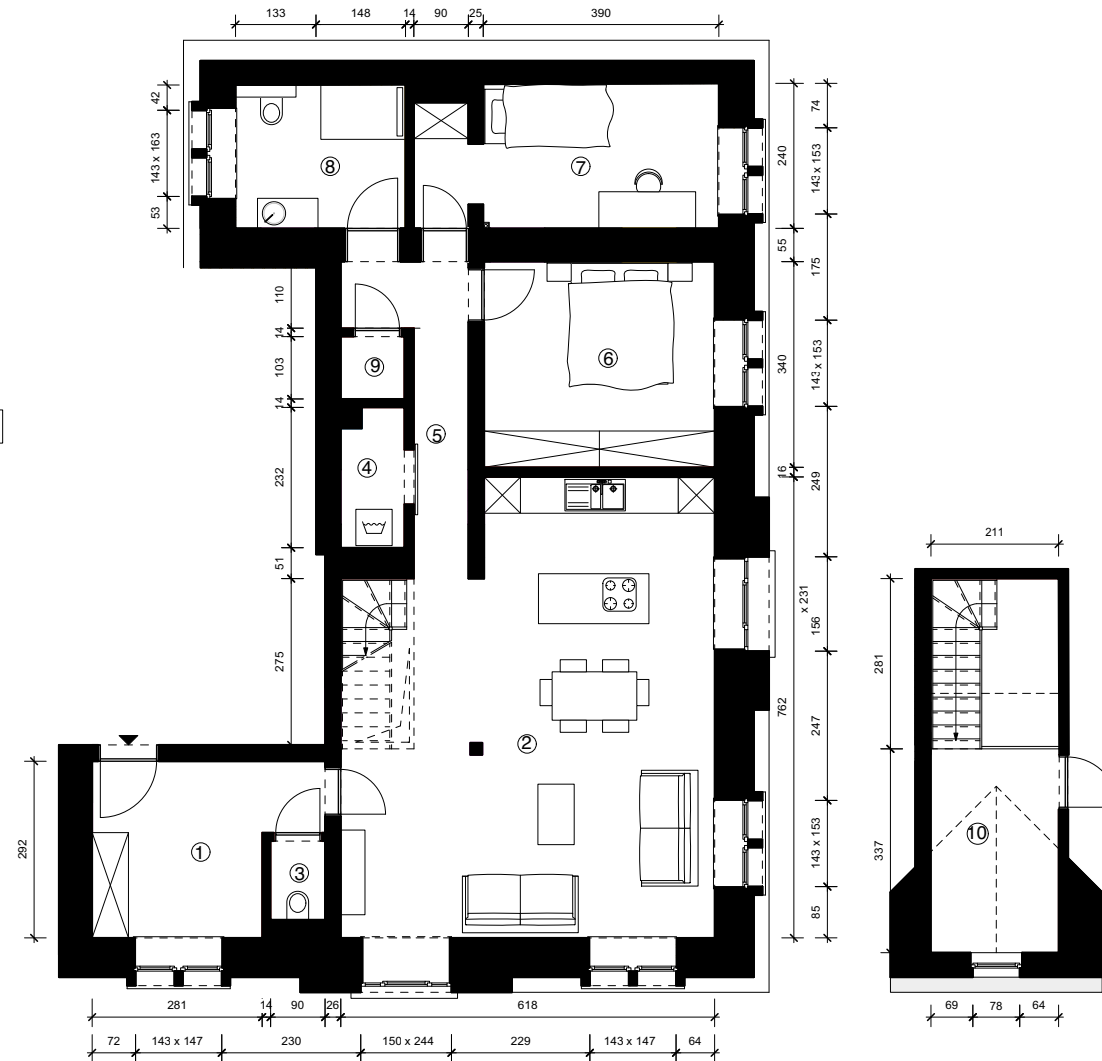


PLAN DU R+3



ELEVATION

### PLANS



PLAN DU R+2 -ECH 1:150

PLAN DU R+3 -ECH 1:150