

# TRANSFORMATION D'UN ANCIEN HÔTEL EN IMMEUBLE DE 14 APPARTEMENTS

Place de la Gare, 1  
5530 Yvoir

## APPARTEMENT 04 / 2 CHAMBRES

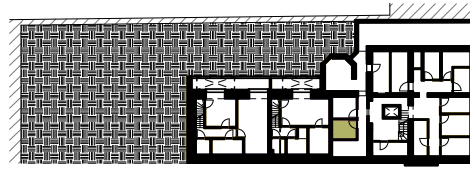
**SURFACE BRUTE TOTALE** 105,4 m<sup>2</sup>

**SURFACE UTILE TOTALE** 88 m<sup>2</sup>

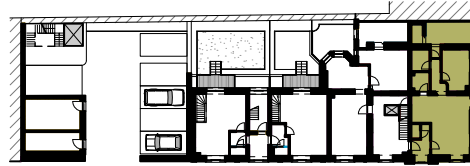
### SURFACE NETTE

- |                                      |                           |
|--------------------------------------|---------------------------|
| 1. HALL (1,78x1,96)+(1,5x0,9)        | 5,7 m <sup>2</sup>        |
| 2. SEJOUR (2,9x6,18)+(3,44x4,05)     | 33,3 m <sup>2</sup>       |
| 3. WC (1,5x0,9)                      | 1,4 m <sup>2</sup>        |
| 4. BUANDERIE (2,03x1,91)             | 3,6 m <sup>2</sup>        |
| 5. HALL DE NUIT (1x2,65)+(1,46x1,67) | 4,4 m <sup>2</sup>        |
| 6. CHAMBRE 1 (3,38x3,1)+(1,06x2,43)  | 12,1 m <sup>2</sup>       |
| 7. CHAMBRE 2 (2,4x4,93)+(1,44x1)     | 13,2 m <sup>2</sup>       |
| 8. SALLE DE BAIN 1 (2,82x1,91)       | 4,3 m <sup>2</sup>        |
| 9. SALLE DE BAIN 2 (2,08x1,2)        | 2,5 m <sup>2</sup>        |
| <b>SURFACE NETTE TOTALE</b>          | <b>80,5 m<sup>2</sup></b> |
| 10. CAVEVETTE PRIVATIVE              | 5,4 m <sup>2</sup>        |

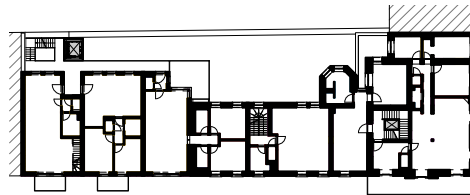
## SITUATION



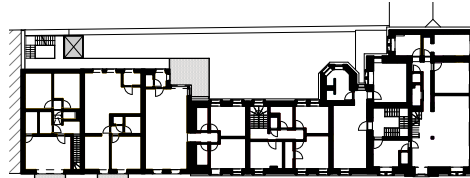
PLAN DU SOUS-SOL



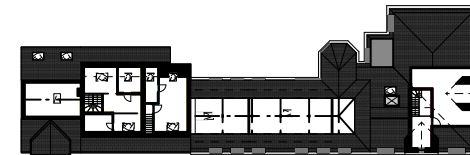
PLAN DU REZ-DE-CHAUSSEE



PLAN DU R+1



PLAN DU R+2

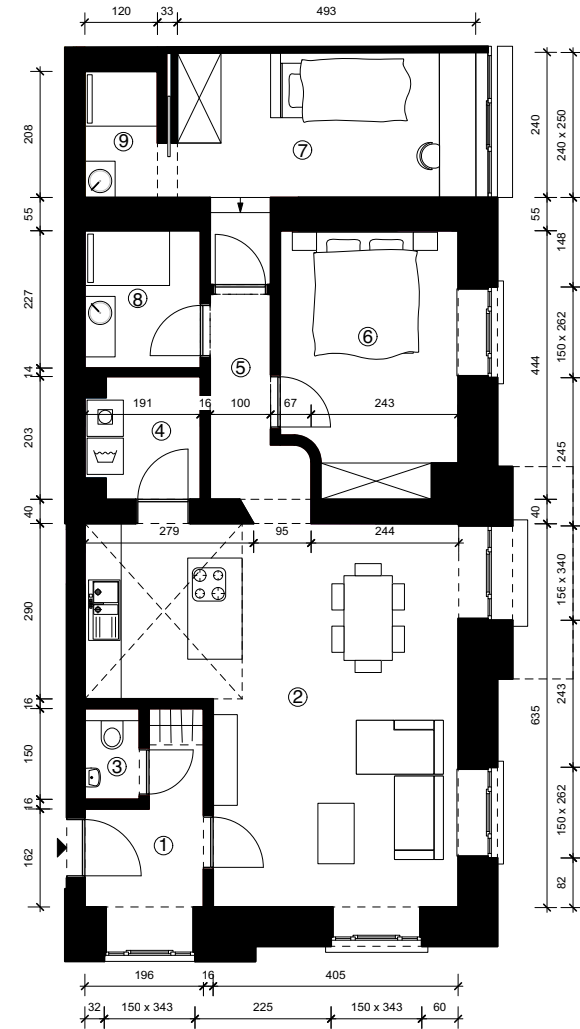


PLAN DU R+3



ELEVATION

## PLANS



PLAN DU REZ-DE-CHAUSSEE - ECH 1:150