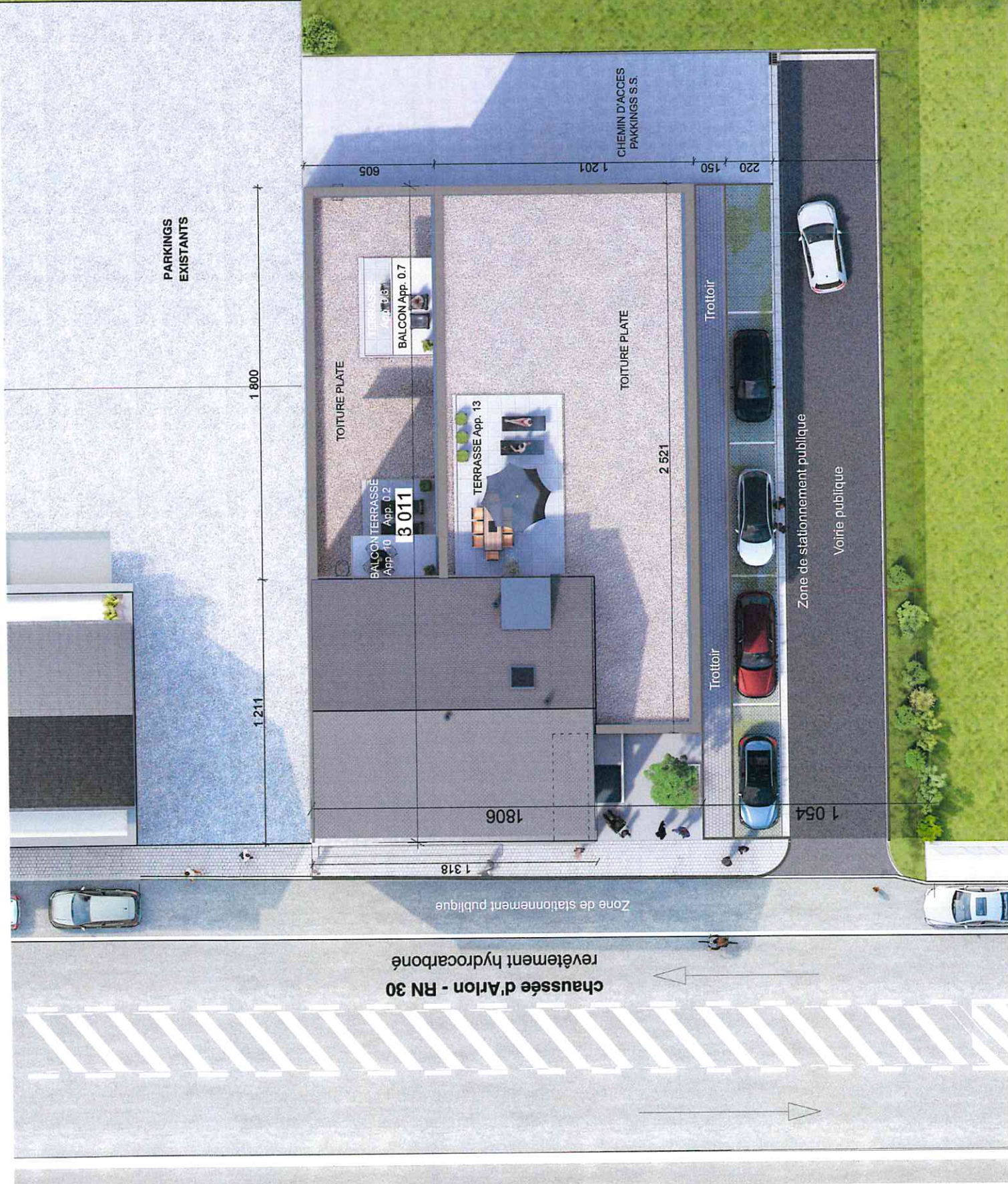
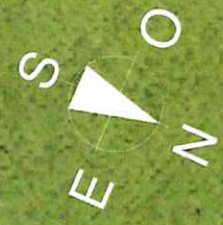


chaussée d'Arlon - RN 30
revêtement hydrocarboné



PARKINGS
EXISTANTS

1 800

1 211

TOITURE PLATE

BALCON App. 0.7

BALCON TERRASSE
App. 0.2
3 011

TERRASSE App. 13

TOITURE PLATE

2 521

1 201

150

220

CHEMIN D'ACCES
PARKINGS S.S.

Trottoir

Trottoir

Zone de stationnement publique

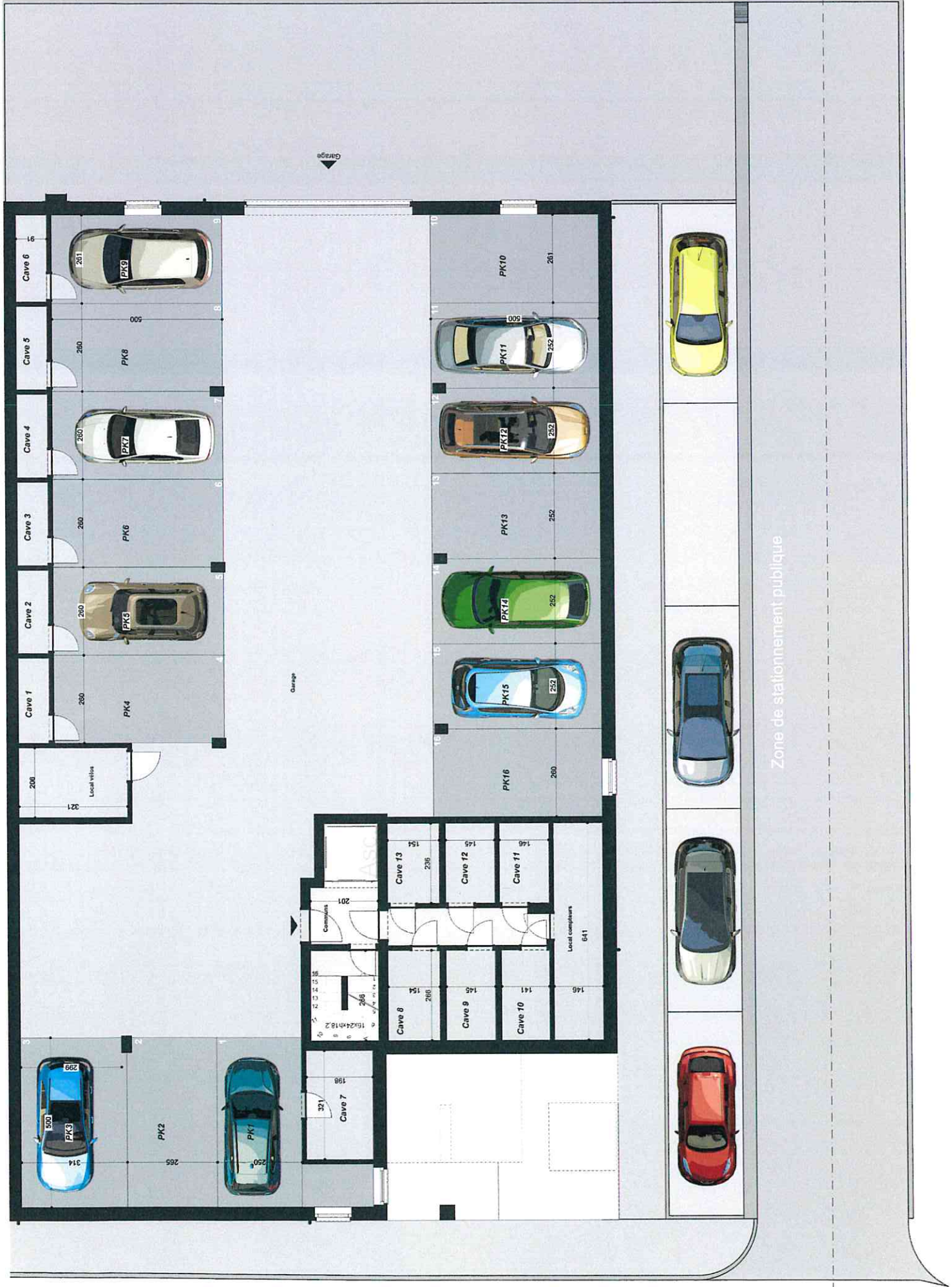
Voie publique

1 806

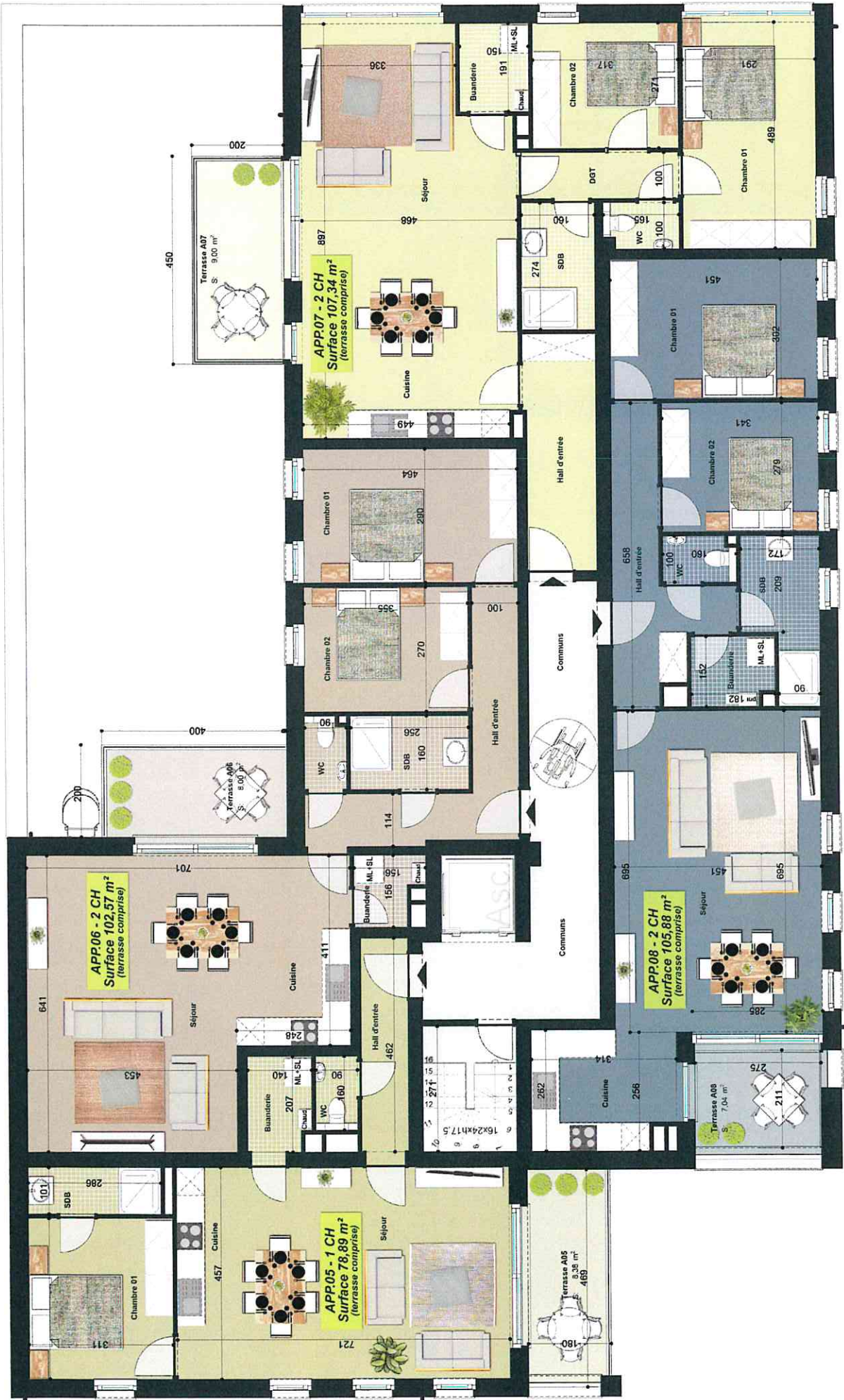
1 318

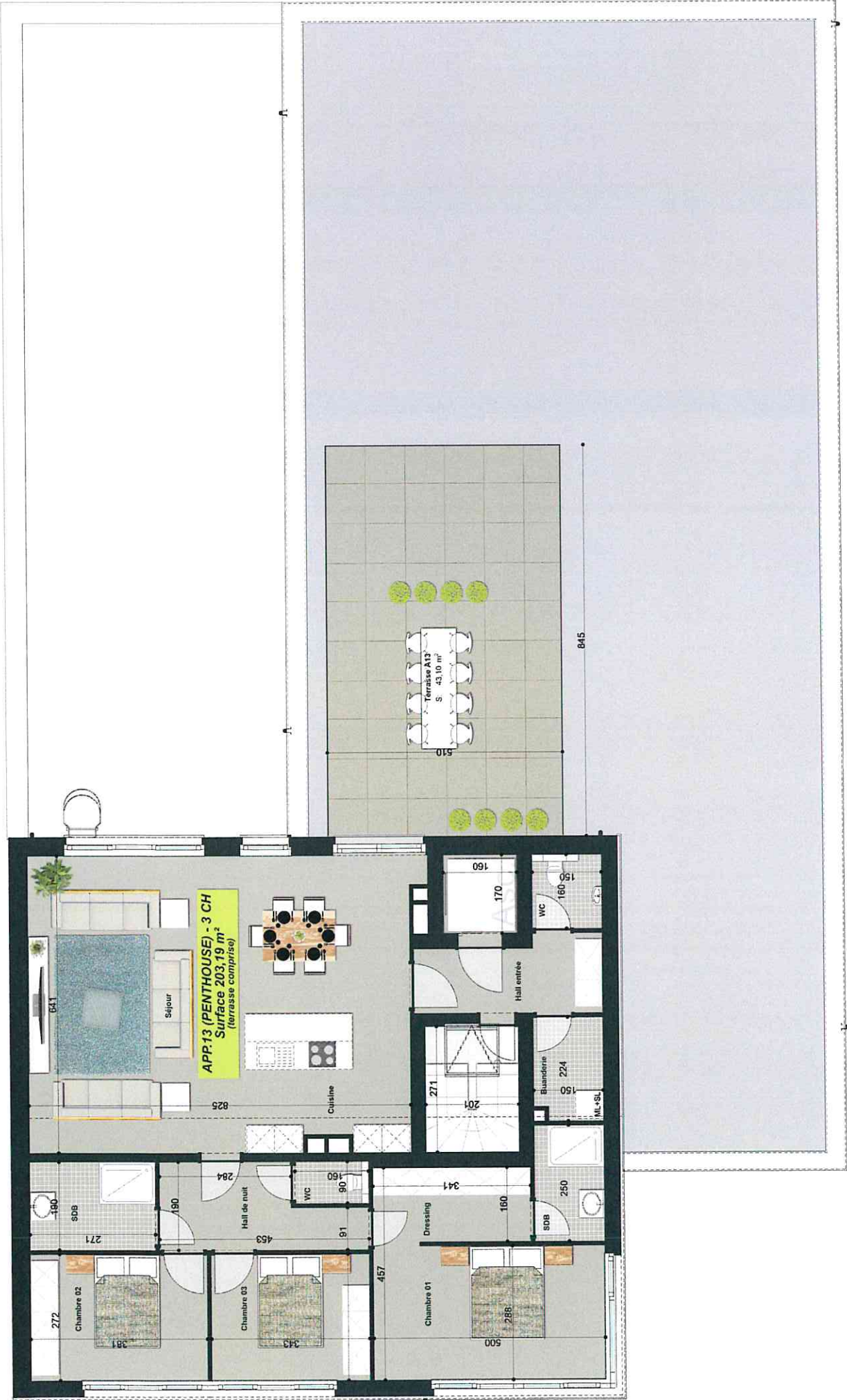
1 054

Zone de stationnement publique



Sous-sol





Troisième