

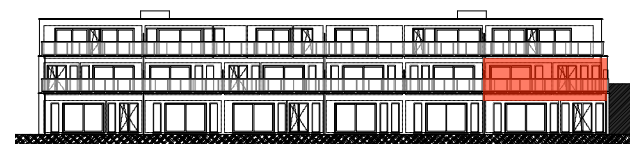
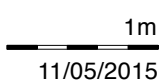


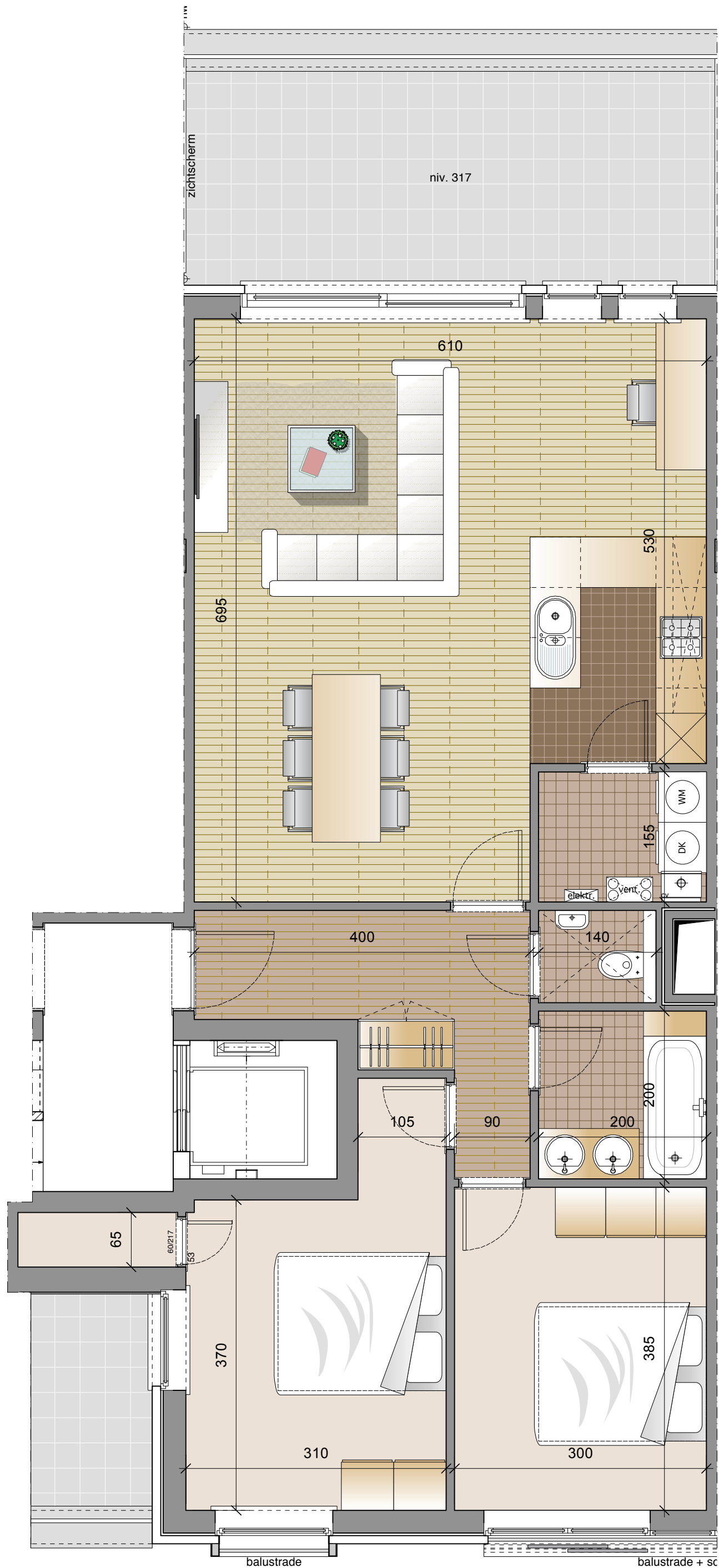
Project:

Gentsesteenweg 107 - 9800 Deinze

APPARTEMENT 1.1

Bruto-oppervlakte: 112,2 m²
Terras/ Balkon: 29,3 m²



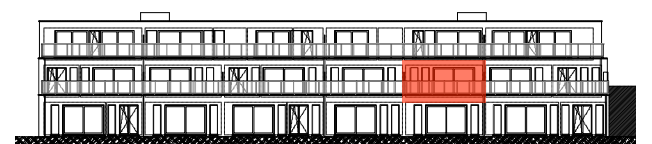
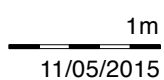


Project:

Gentsesteenweg 107 - 9800 Deinze

APPARTEMENT 1.2

Bruto-oppervlakte: 94,9 m²
Terras/ Balkon: 23,3 m²



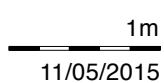


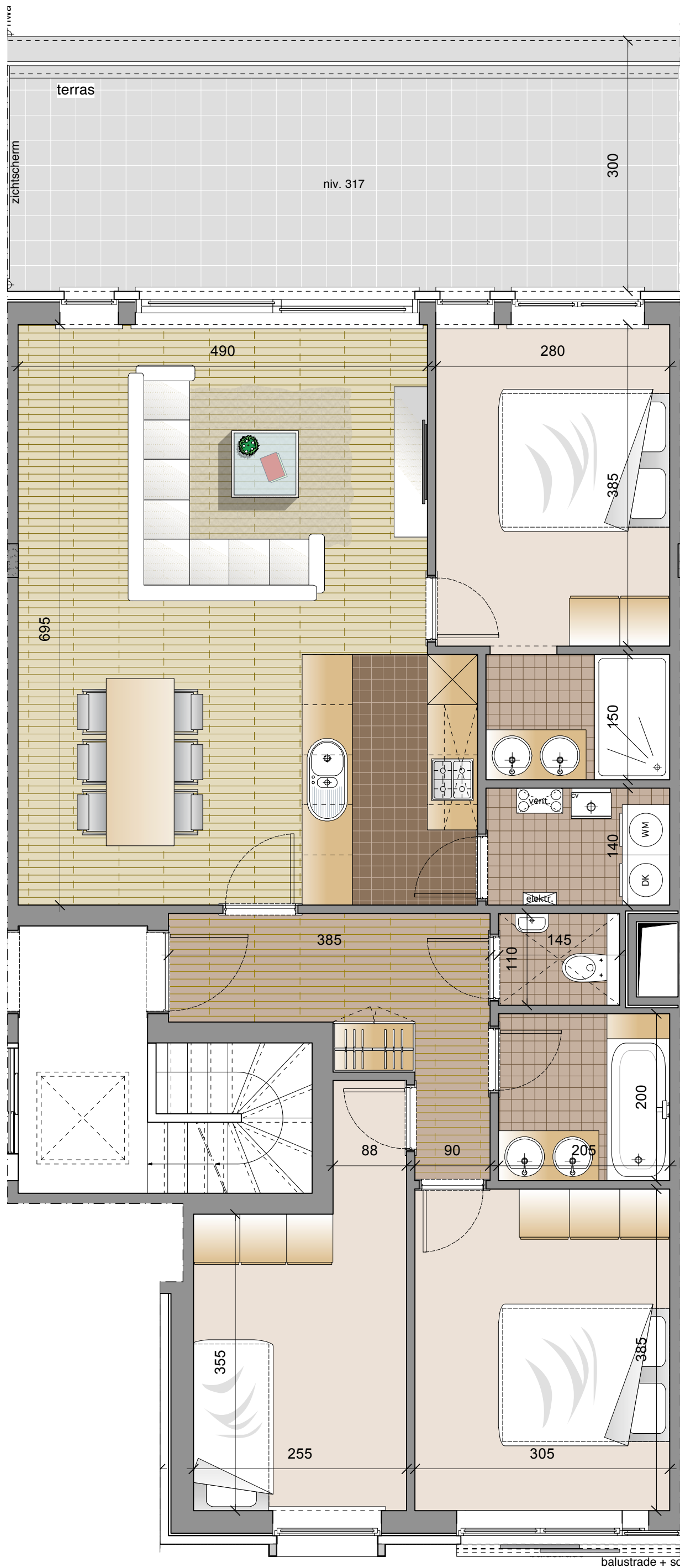
Project:

Gentsesteenweg 107 - 9800 Deinze

APPARTEMENT 1.3

Bruto-oppervlakte: 94,2 m²
Terras/ Balkon: 23,3 m²





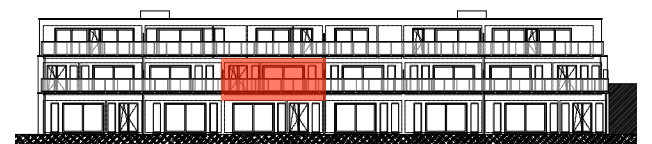
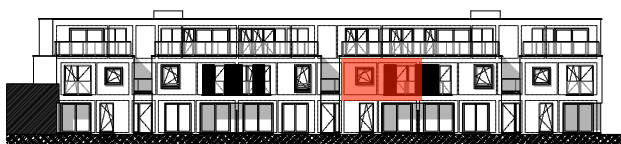
Project:

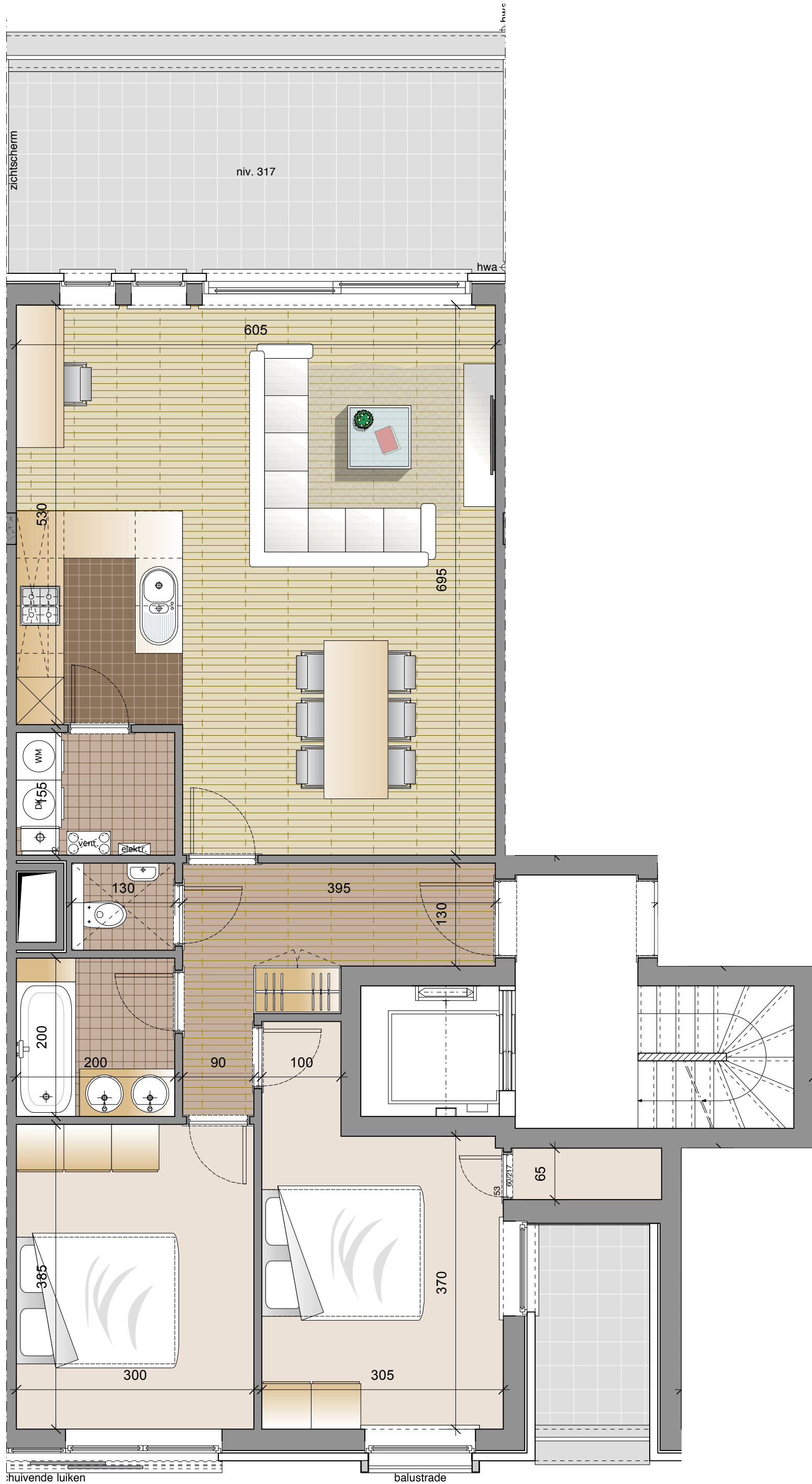
Gentsesteenweg 107 - 9800 Deinze

APPARTEMENT 1.4

Bruto-oppervlakte: 102,7 m²
Terras/ Balkon: 24,1 m²

1m
11/05/2015



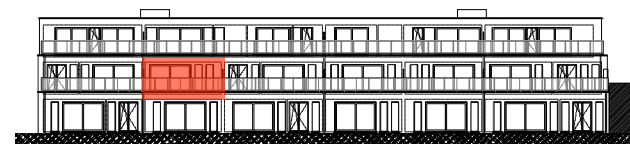
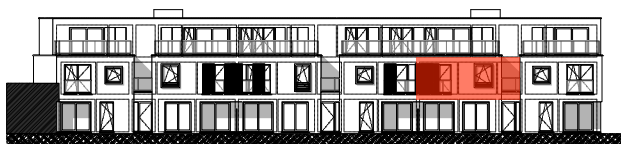
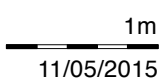


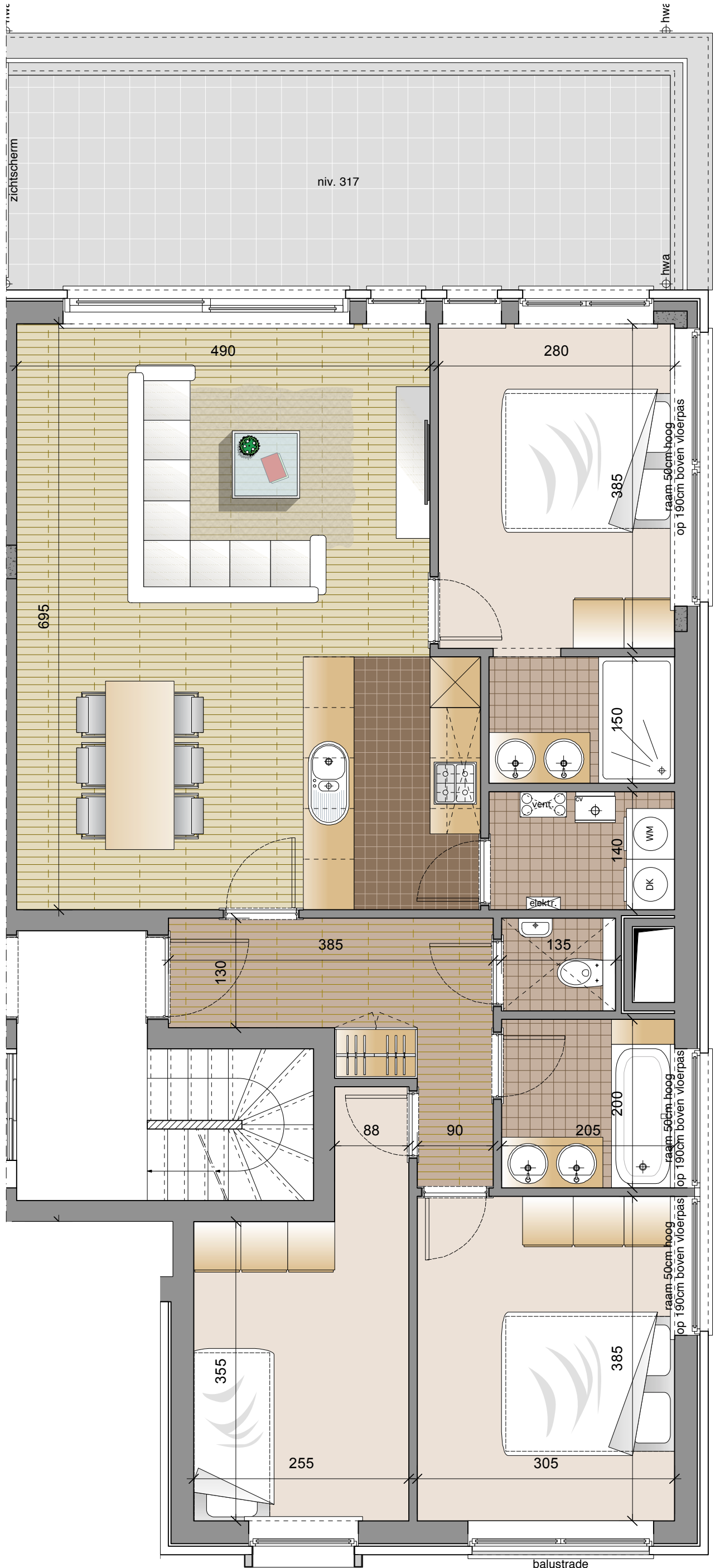
Project:

Gentsesteenweg 107 - 9800 Deinze

APPARTEMENT 1.5

Bruto-oppervlakte: 94,2 m²
Terras/ Balkon: 23,2 m²

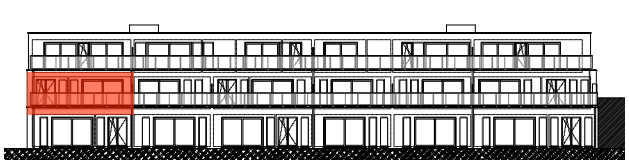


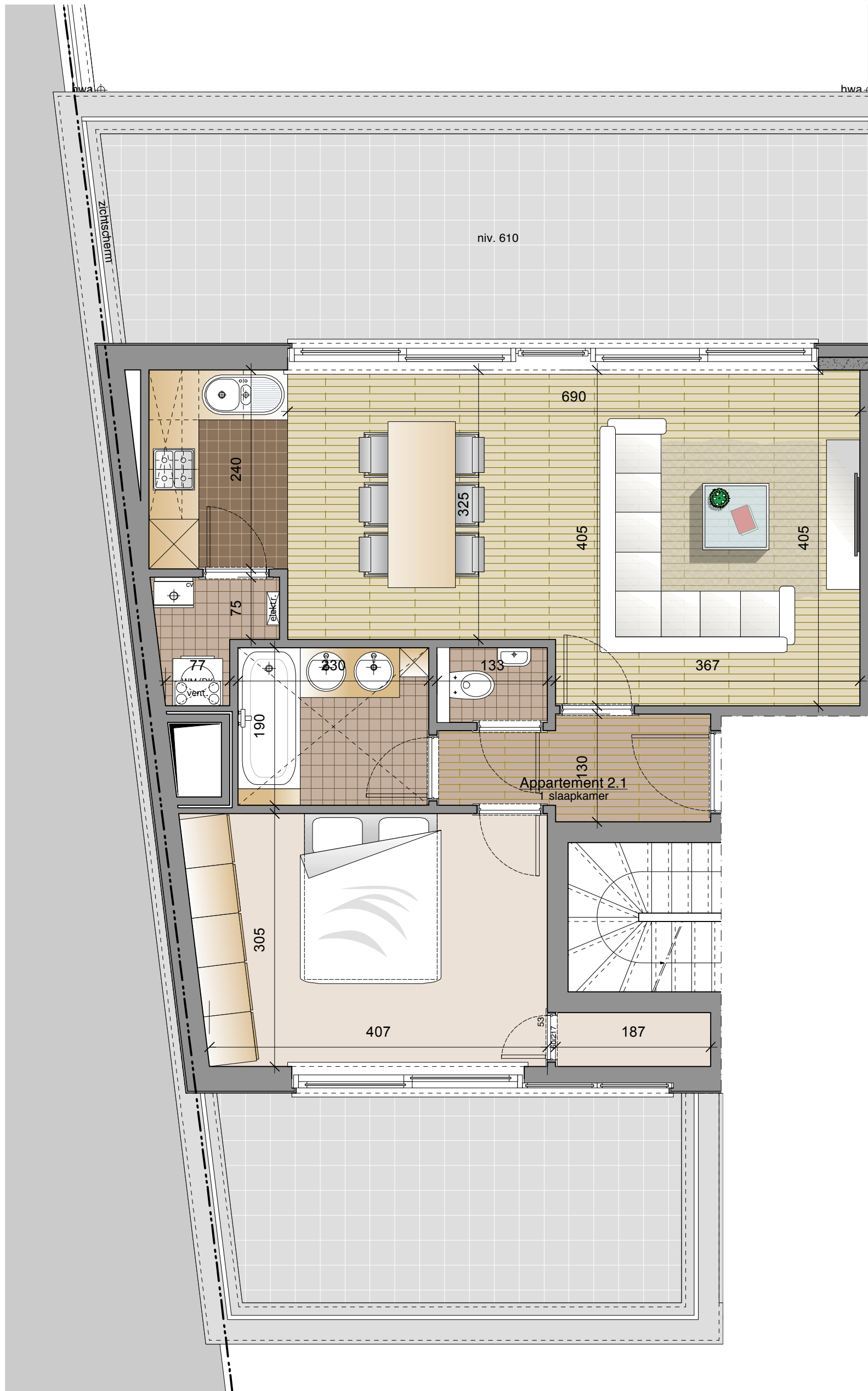


Project:
Gentsesteenweg 107 - 9800 Deinze

APPARTEMENT 1.6
 Bruto-oppervlakte: 106,8 m²
 Terras/ Balkon: 24,9 m²

11/05/2015



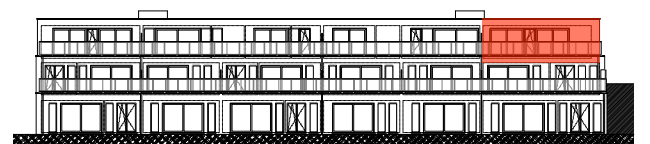
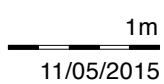


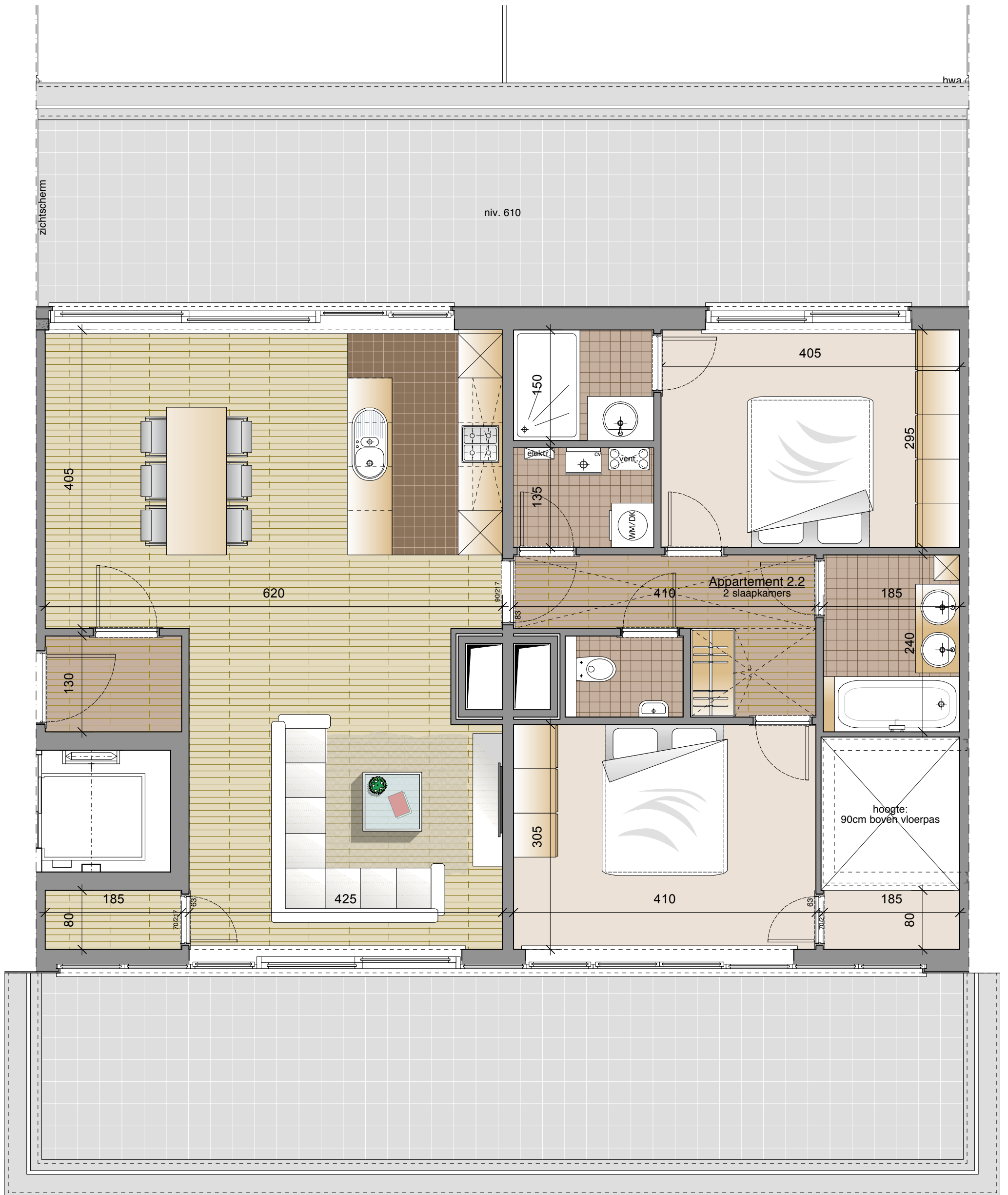
Project:

Gentsesteenweg 107 - 9800 Deinze

APPARTEMENT 2.1

Bruto-oppervlakte: 66,2 m²
Terras/ Balkon: 46,3 m²



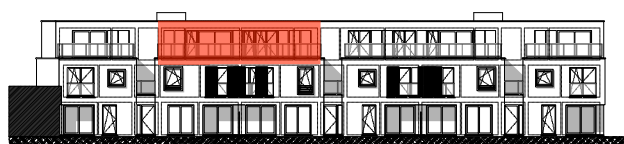


Project:
Gentsesteenweg 107 - 9800 Deinze

APPARTEMENT 2.2

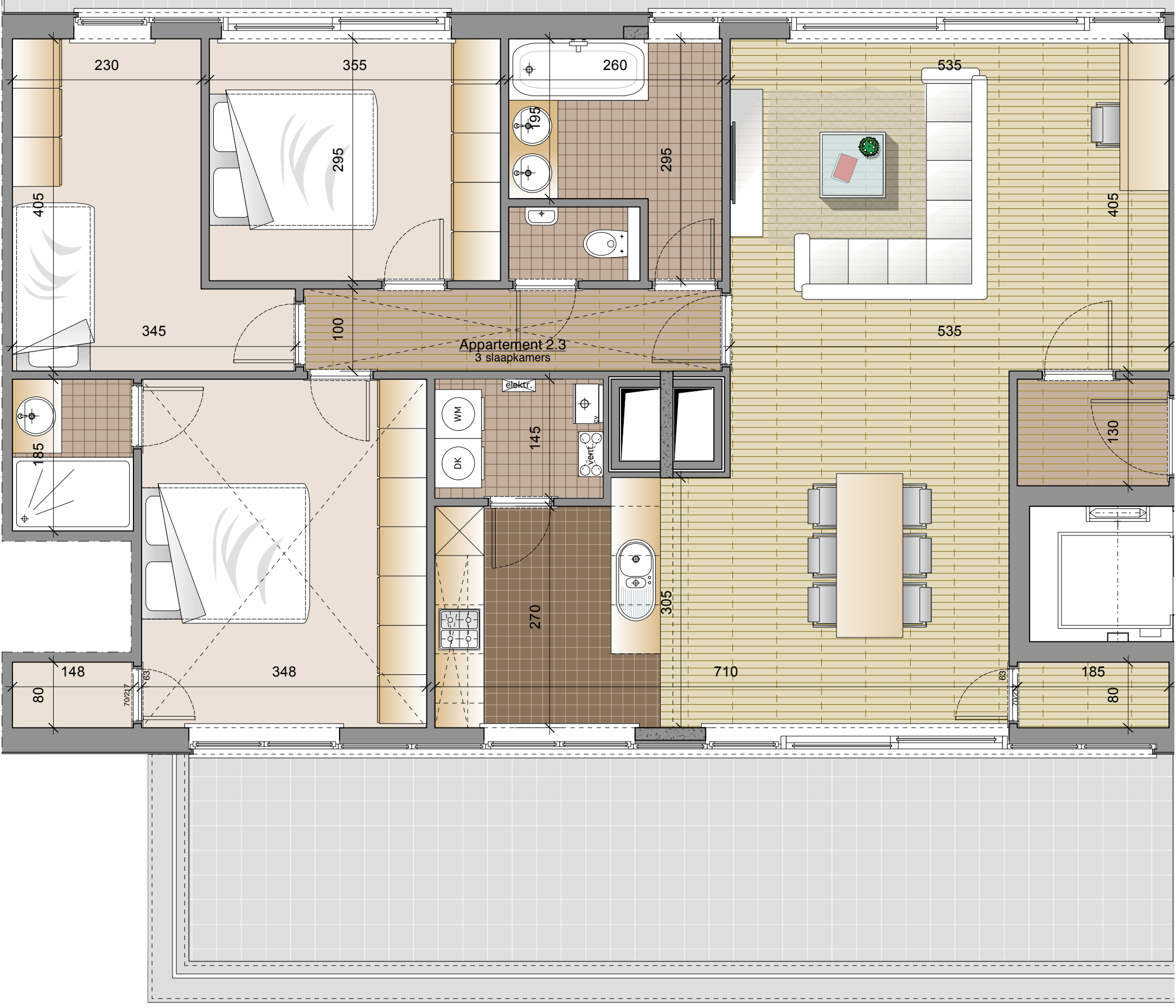
Bruto-oppervlakte: 110,6 m²
 Terras/ Balkon: 77,6 m²

1m
 11/05/2015



zichtscherp

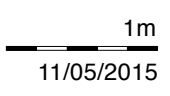
niv. 610

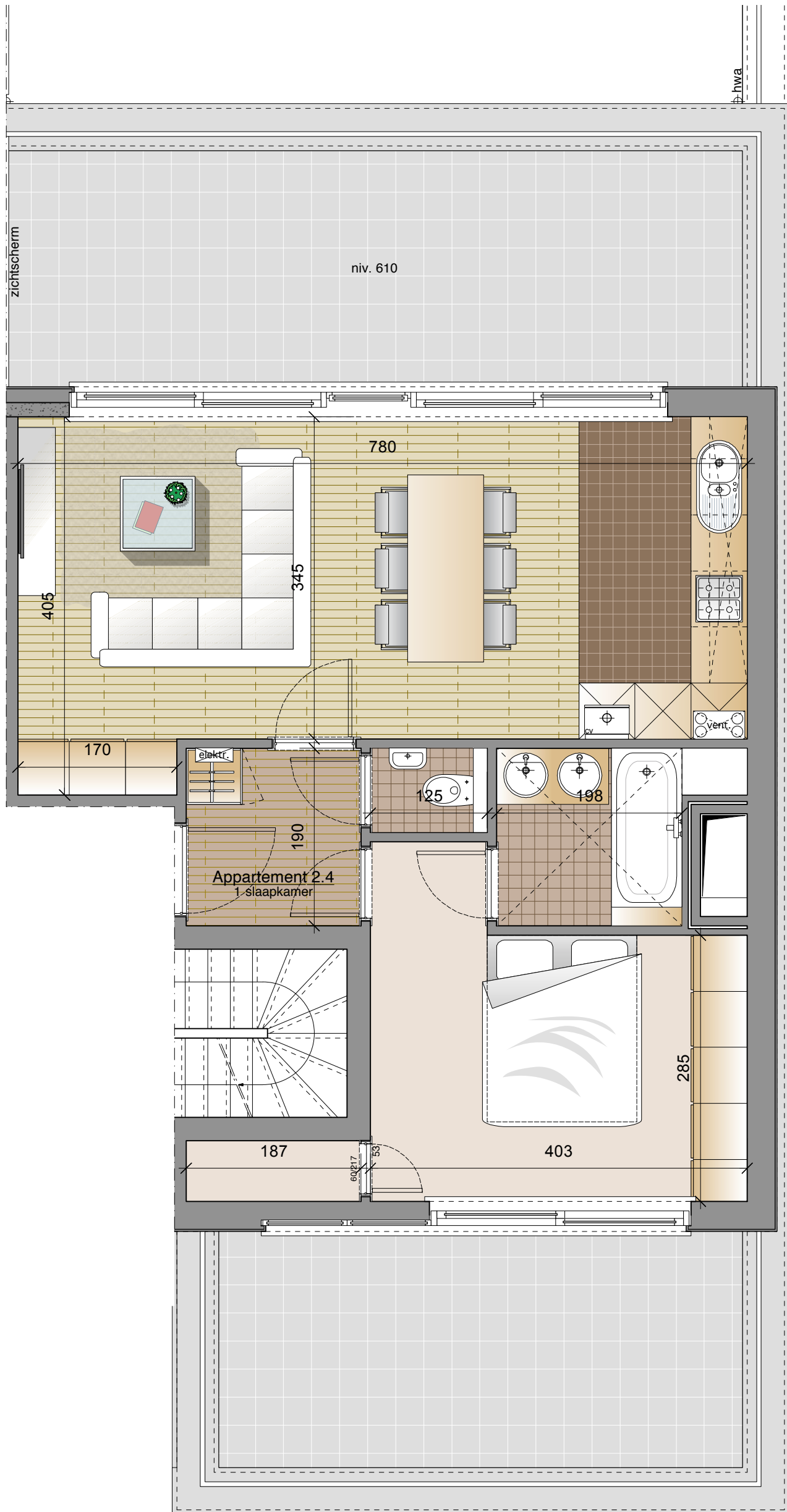


Project:
Gentsesteenweg 107 - 9800 Deinze

APPARTEMENT 2.3

Bruto-oppervlakte: 126 m²
 Terras/ Balkon: 81,2 m²





Project:

Gentsesteenweg 107 - 9800 Deinze

APPARTEMENT 2.4

Bruto-oppervlakte: 62,3 m²
Terras/ Balkon: 44,1 m²

1m
11/05/2015

