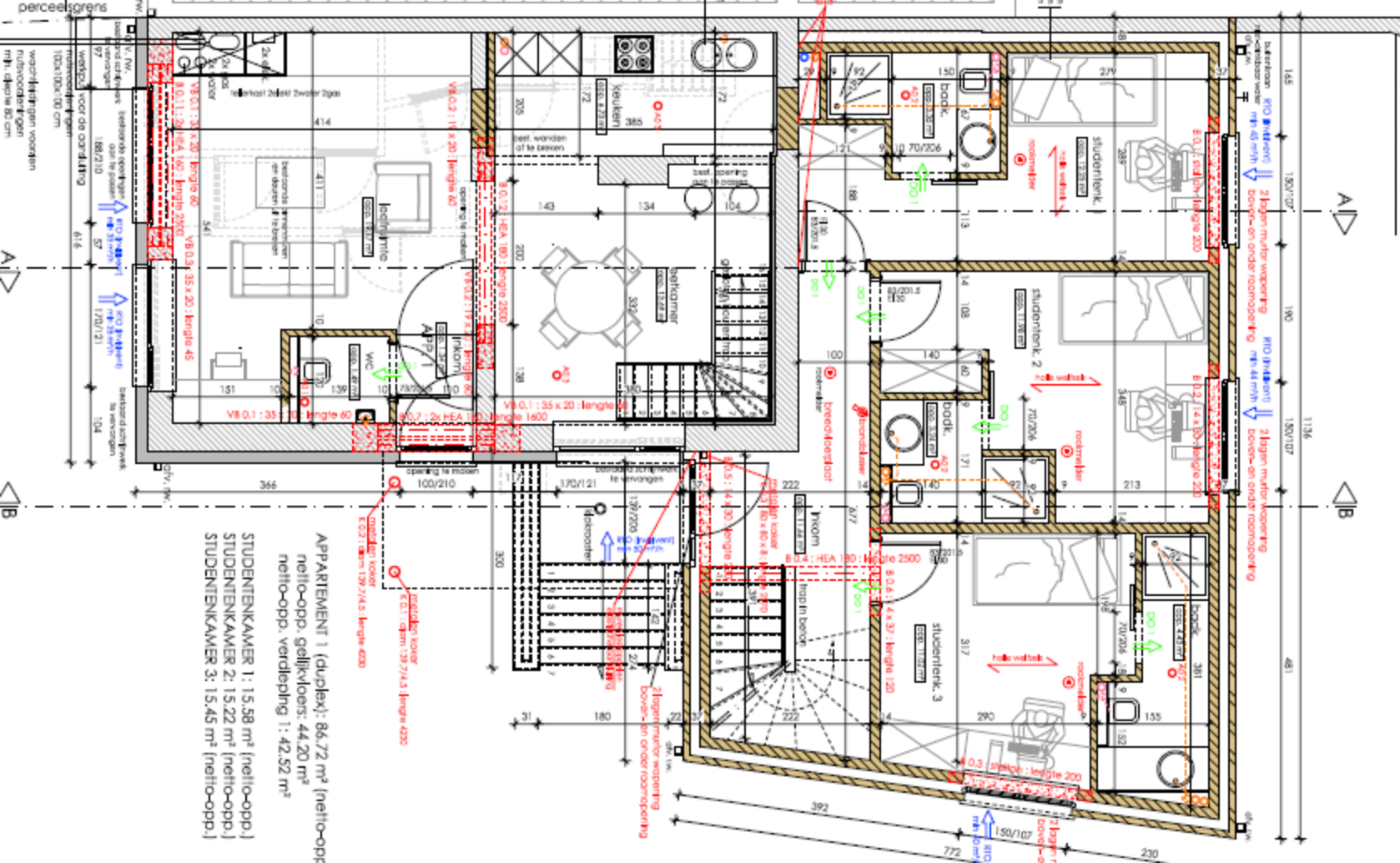


bestaande muur wordt verhoogd tot max.  
1m30 boven maaiveld. Interieur.



APARTMENT 1 (duplex): 86,72 m<sup>2</sup> netto-opp.  
netto-opp. gelijkvloers: 44,20 m<sup>2</sup>  
netto-opp. verdieping 1: 42,52 m<sup>2</sup>

STUDENTENKAMER 1: 15,58 m<sup>2</sup> (netto-opp.)  
STUDENTENKAMER 2: 15,22 m<sup>2</sup> (netto-opp.)  
STUDENTENKAMER 3: 15,45 m<sup>2</sup> (netto-opp.)