

Les Symphorines

Rue Nanon & Rue Derenne - Deldinne.
B-5002 St Servais.

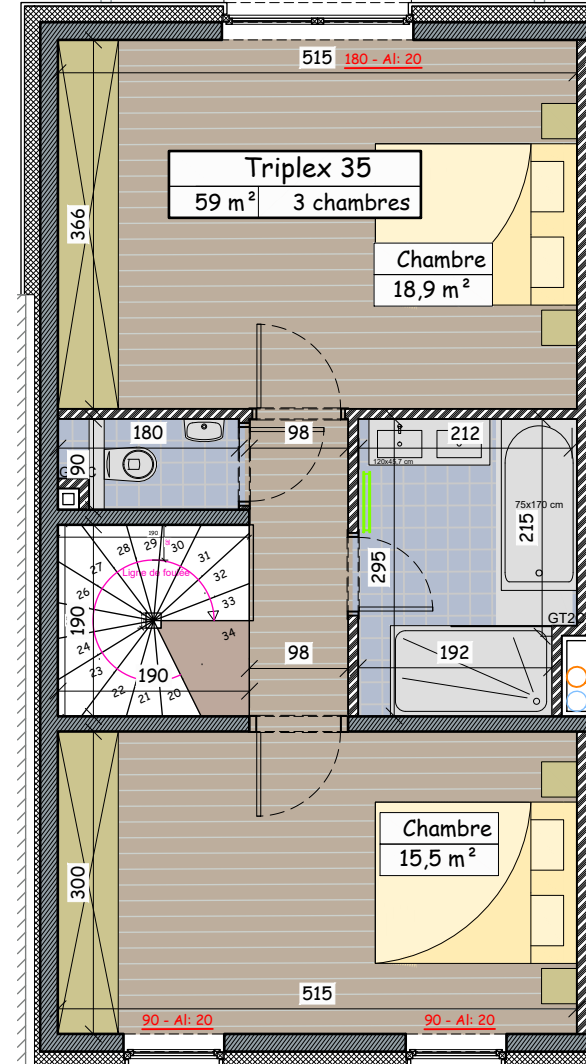
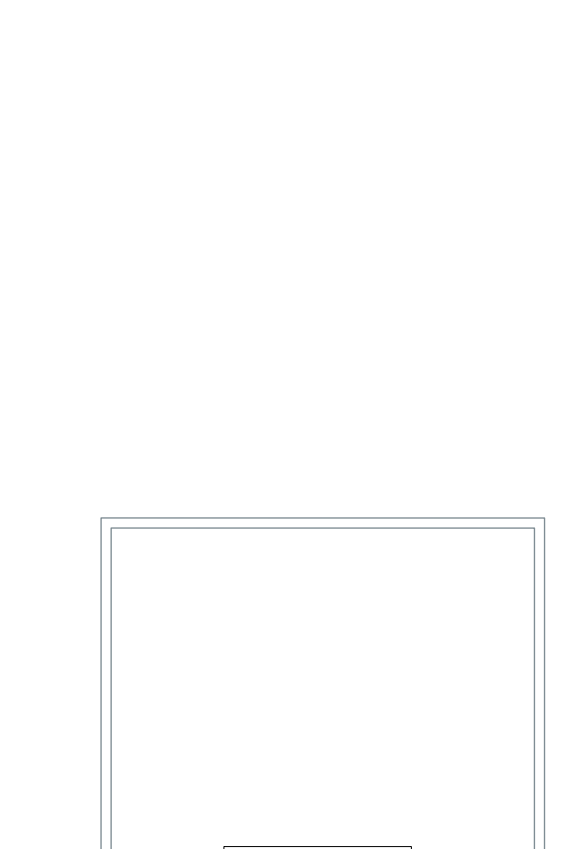
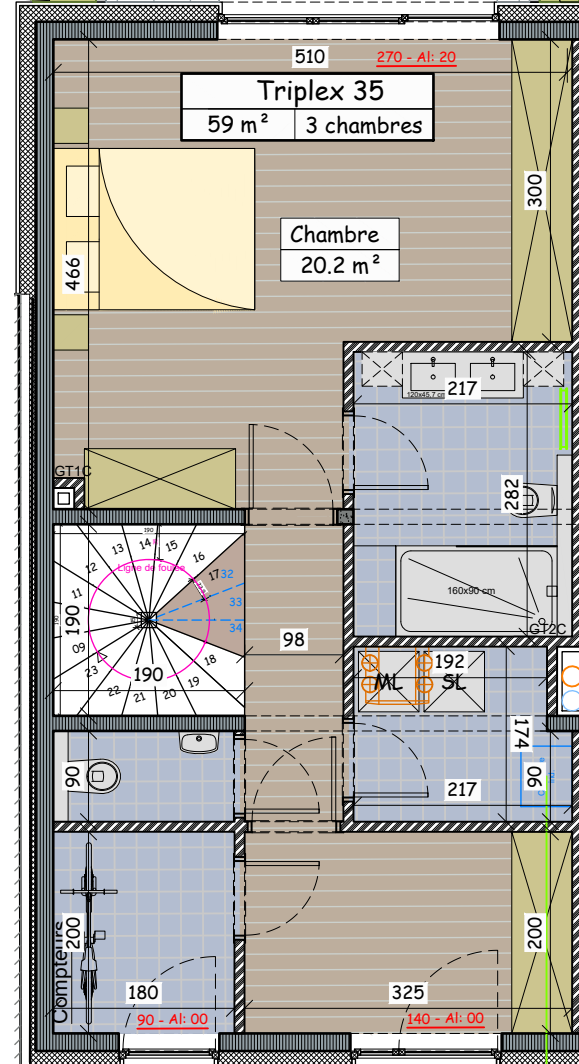
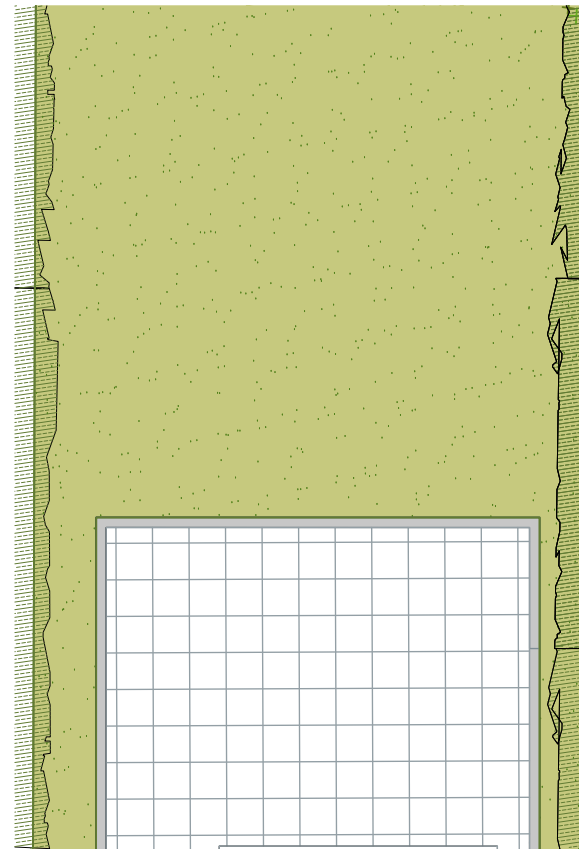
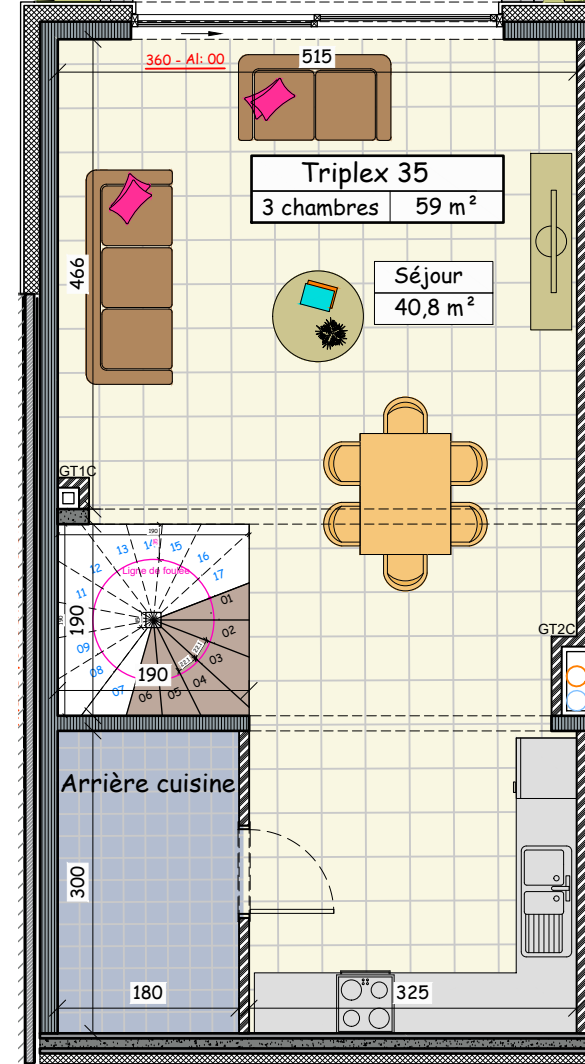
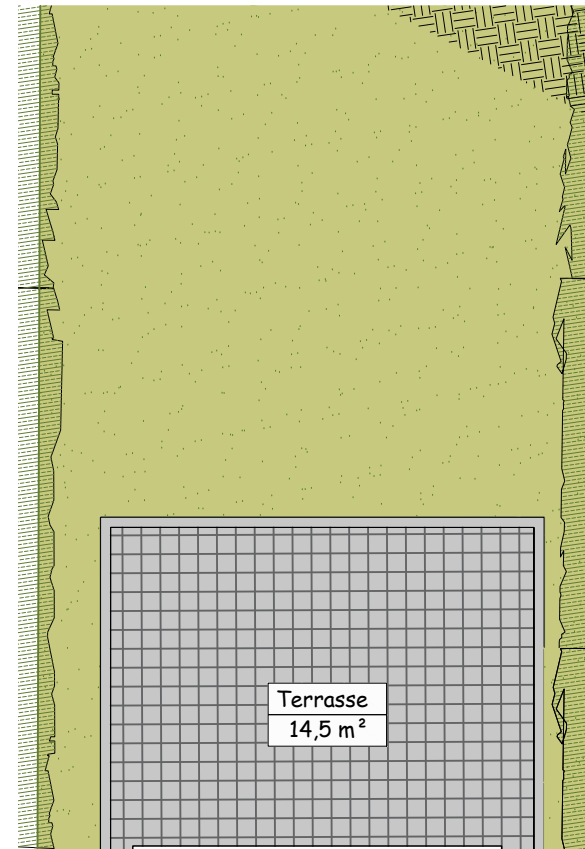
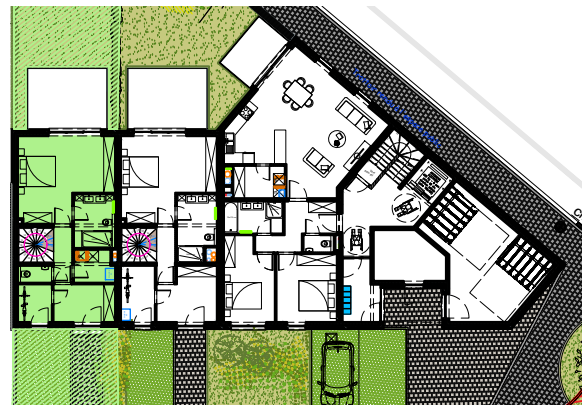
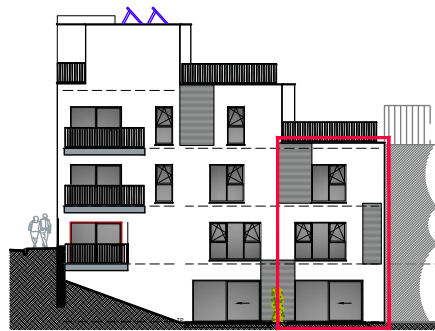
Niveau RDJ/RDC/Et1.

Triplex 35

Appartement 3 chambres
Surface de 177m²
Terrasse de 14,5m²
Jardin de +/- 92m²



PEB A+



Ces informations et plans sont purement indicatifs et non contractuels. Des modifications peuvent intervenir en cours d'exécution.

03 Avril 2026