

kelder 1

24m²

5.30x5.65

kelder 2

4.9m²

2.00x2.50

kelder 3

6.9m²

2.00x3.45

kelder 4

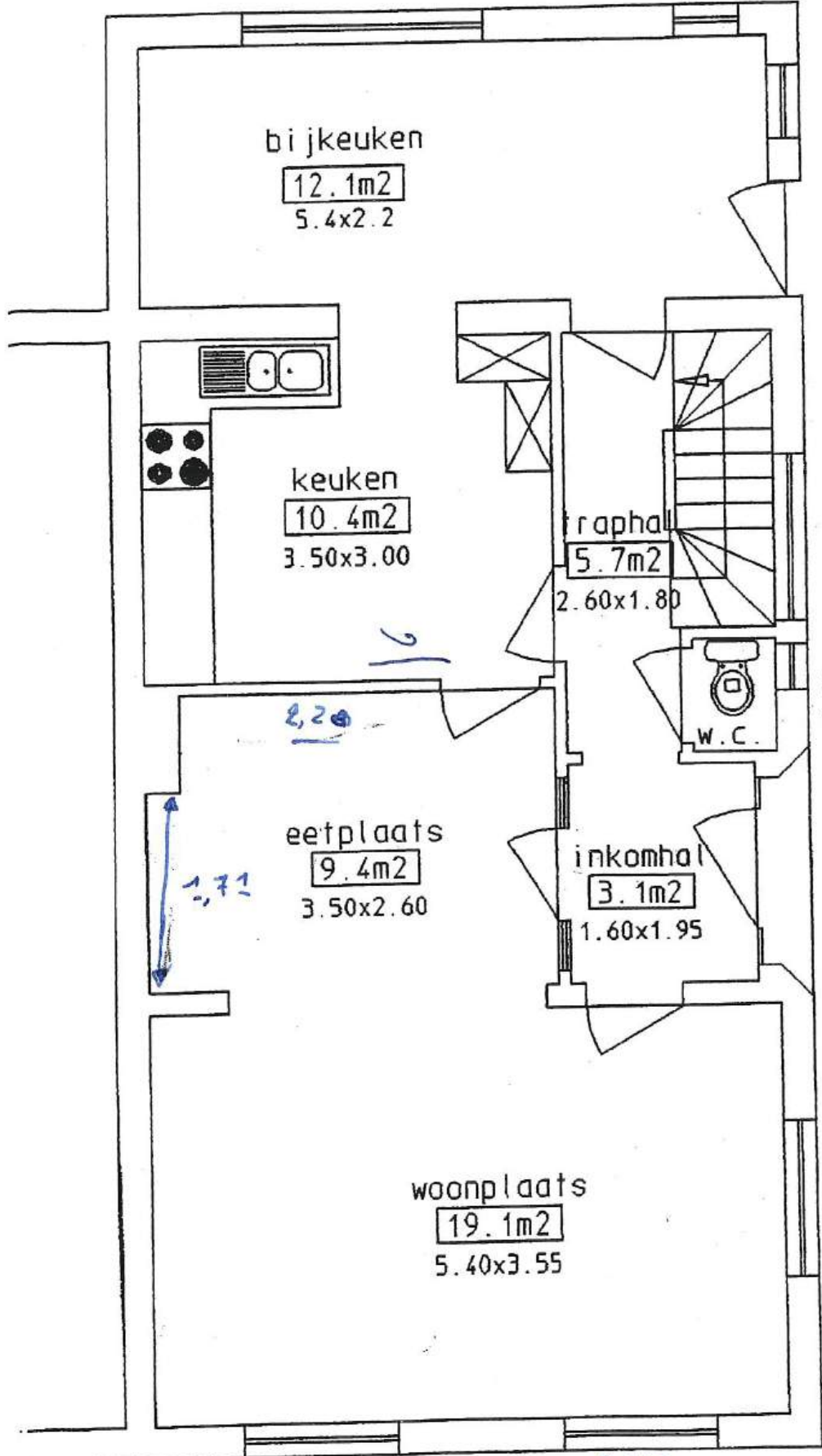
6.8m²

1.95x3.45

tellers

3.9m²

1.10x3.45



bijkeuken

12.1m²

5.4x2.2

keuken

10.4m²

3.50x3.00

traphal

5.7m²

2.60x1.80

W.C.

eetplaats

9.4m²

3.50x2.60

inkomhal

3.1m²

1.60x1.95

woonplaats

19.1m²

5.40x3.55

12.50m

5.80m

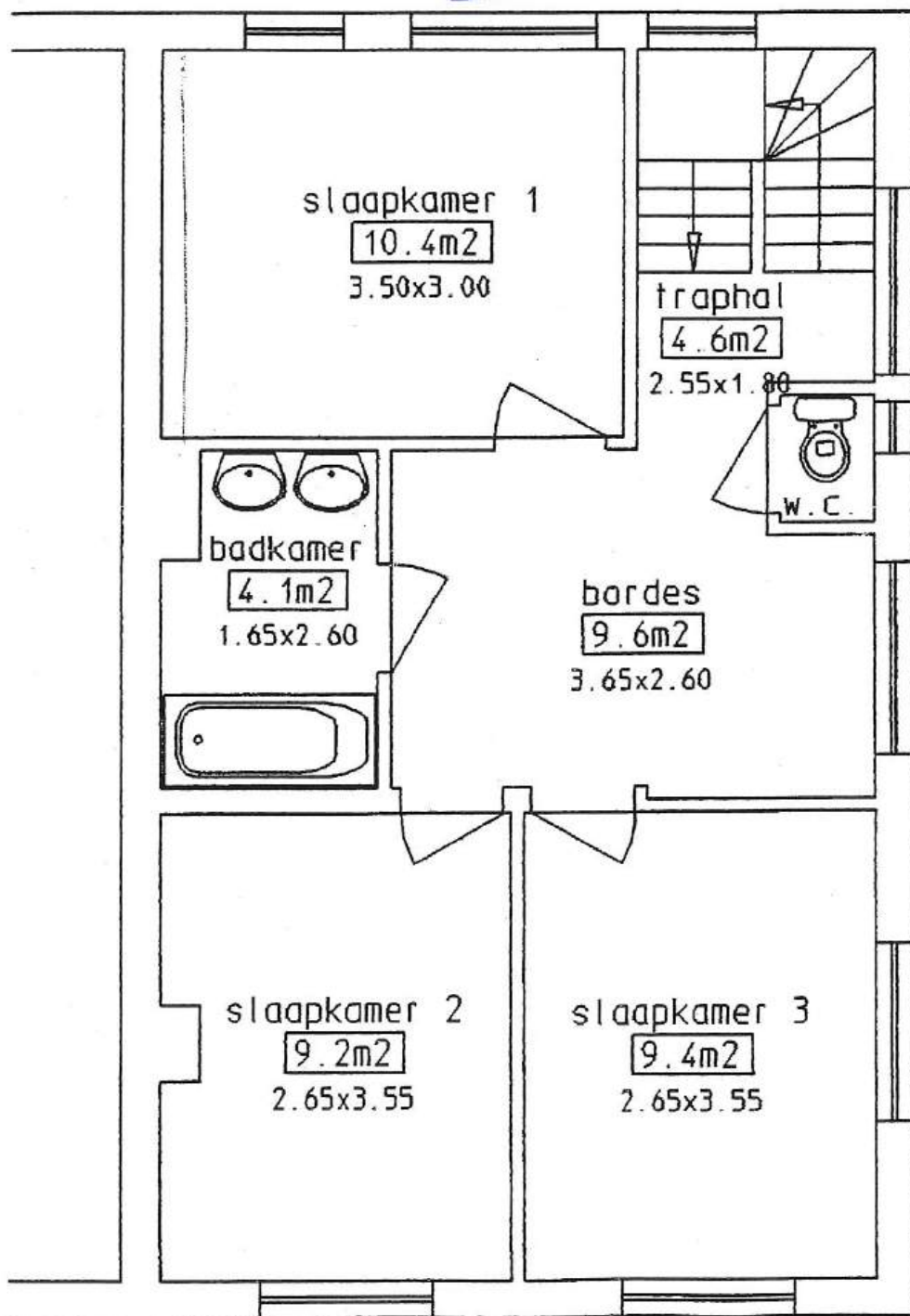
2.45
≈ 3.41

2.45
≈ 3.40

1.71

2.20

2.21

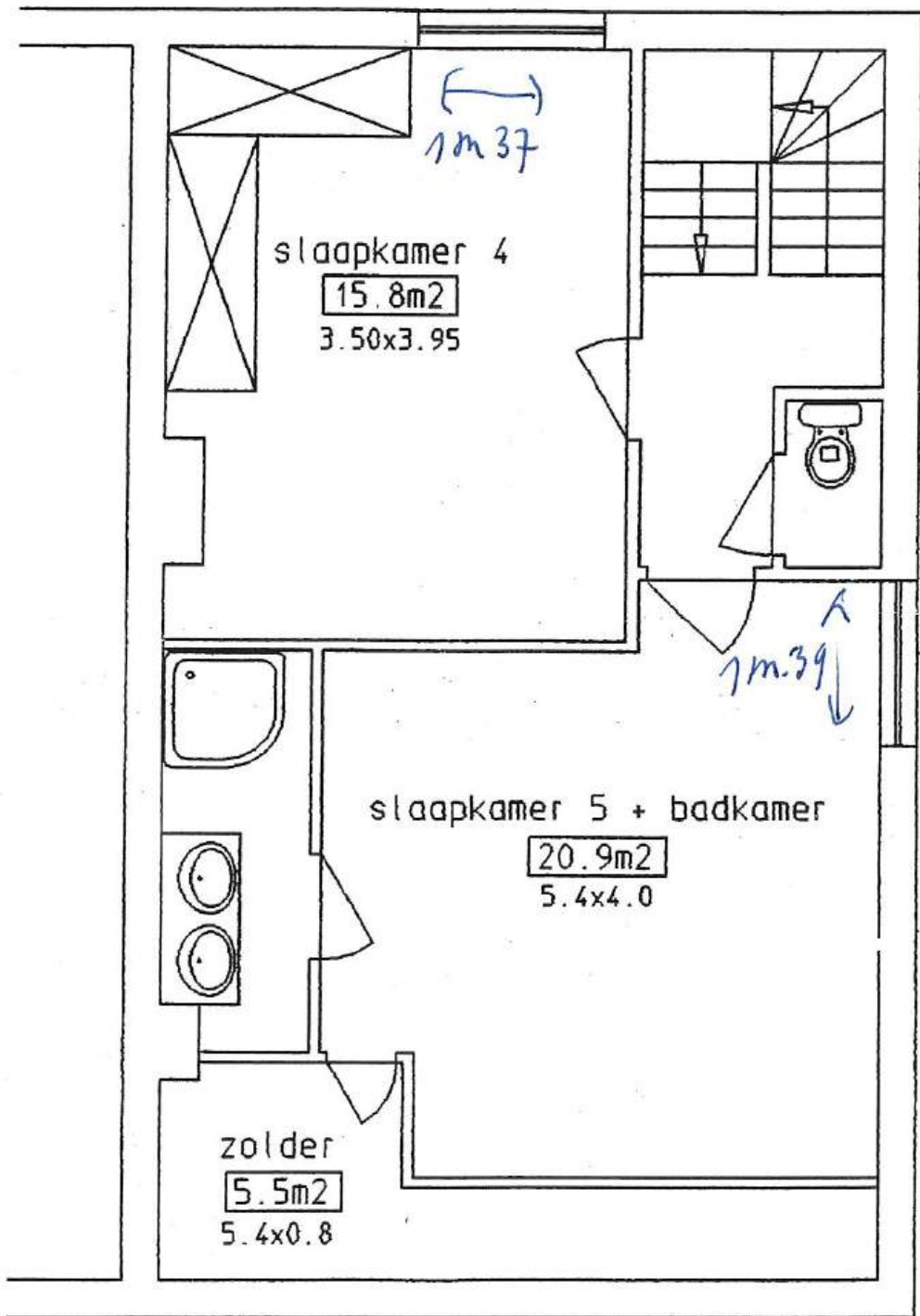


10.00m

2.20

5.80m

2,32



slaapkamer 4

15.8m²

3.50x3.95

1m.37

slaapkamer 5 + badkamer

20.9m²

5.4x4.0

1m.39

10.00m

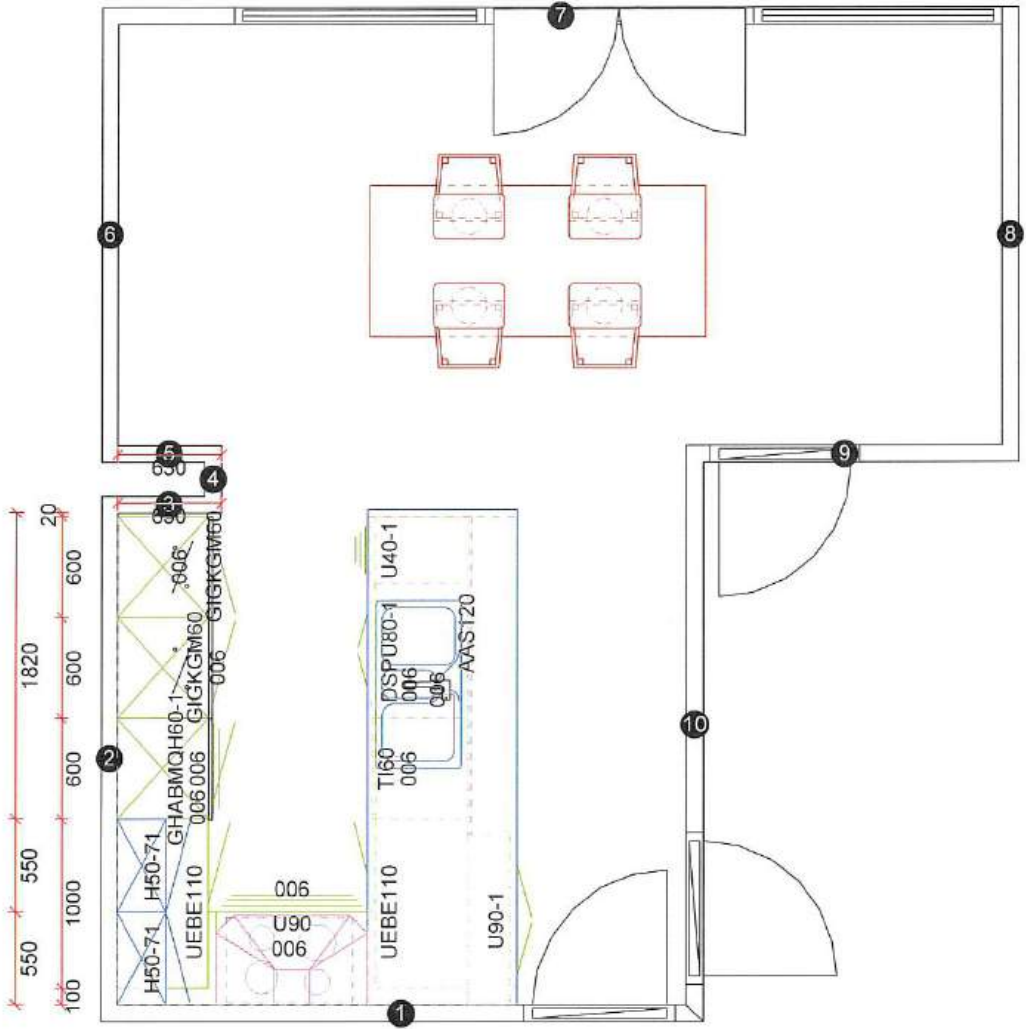
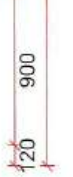
2,32

zolder

5.5m²

5.4x0.8

5.80m





2710 mm

2140 mm



400 mm

2710 mm

3213 mm

170

