

Piers de Raveschootlaan

SUBMITTED BY
Jessy Nauwelaers
info@schatter-expert.be

CREATED ON
2024-05-17

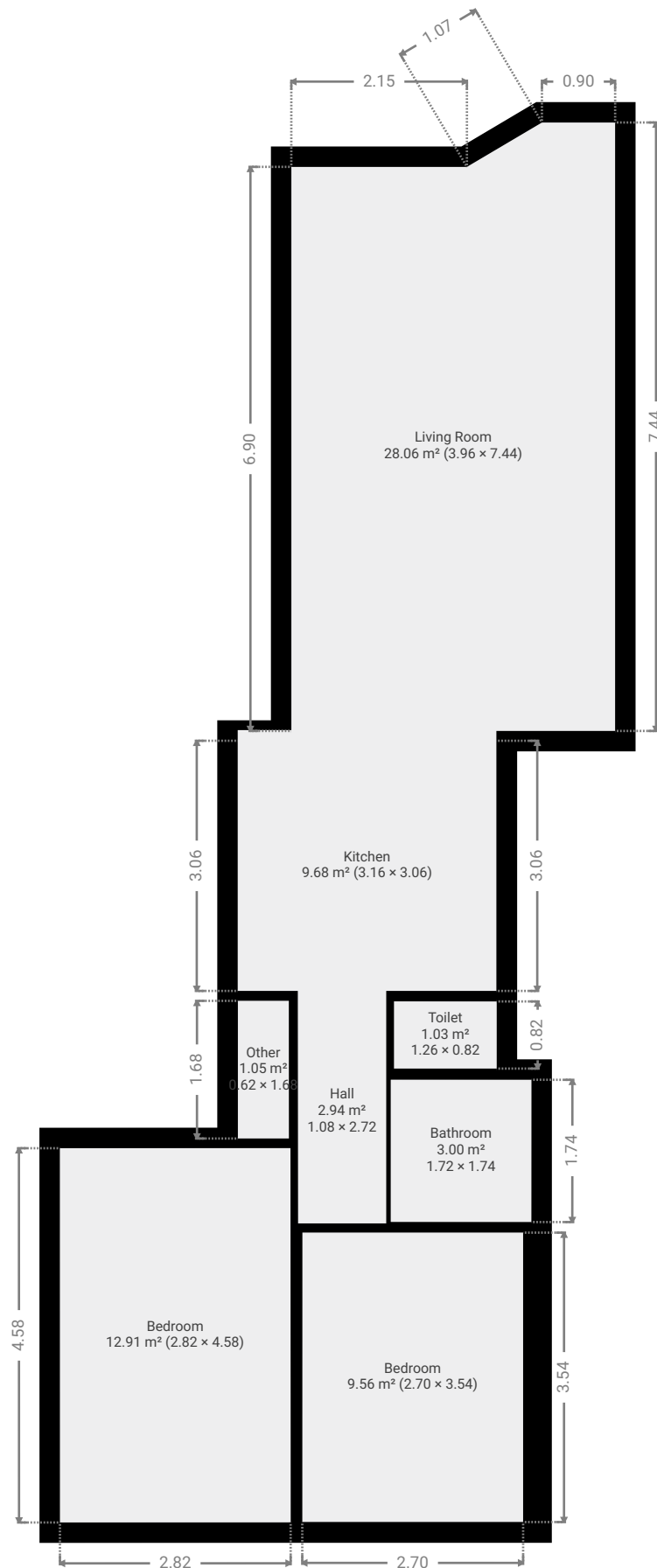
Total area 70.48 m ²	Floors 1	Rooms 8	Bathroom 1
---	--------------------	-------------------	----------------------

Piers de Raveschootlaan

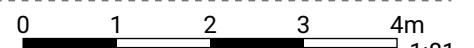
TOTAL AREA: 70.48 m² • LIVING AREA: 70.48 m² • FLOORS: 1 • ROOMS: 8

▼ Ground Floor

TOTAL AREA: 70.48 m² • LIVING AREA: 70.48 m² • ROOMS: 8



DEZE PLATTEGROND WORDT GELEVERD ZONDER ENIGE GARANTIE VAN WELKE SOORT DAN OOK. EABN WIJST ELKE GARANTIE AF, INCLUSIEF BEVREDIGENDE KWALITEIT OF NAUWKEURIGHEID VAN DE AFMETINGEN. LOUTER INDICATIEF EN ILLUSTRATIEF. NIET BINDEND.



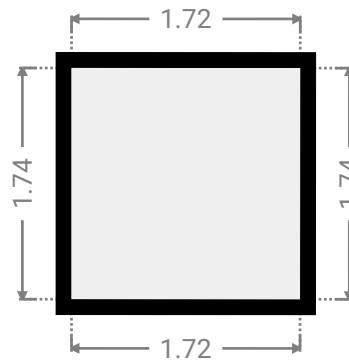
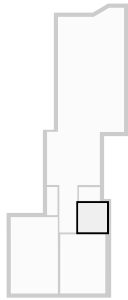
1:81

Piers de Raveschootlaan

TOTAL AREA: 70.48 m² • LIVING AREA: 70.48 m² • FLOORS: 1 • ROOMS: 8

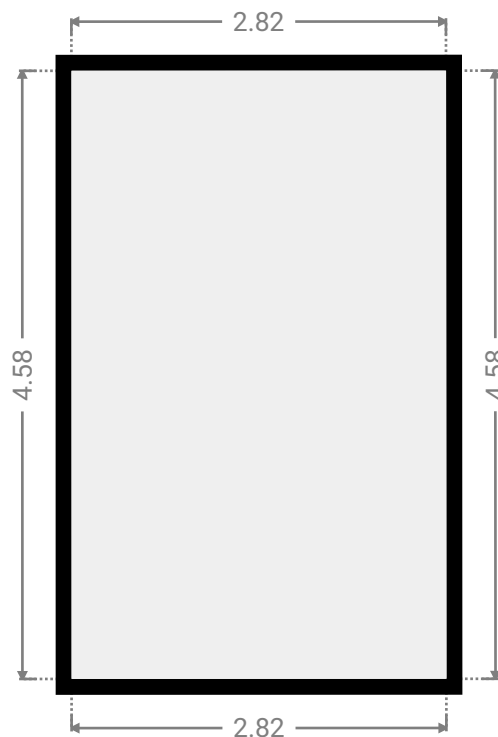
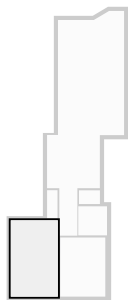
▼ Bathroom Ground Floor

WIDTH: 1.72 m • LENGTH: 1.74 m
AREA: 3.00 m² • PERIMETER: 6.92 m



▼ Bedroom Ground Floor

WIDTH: 2.82 m • LENGTH: 4.58 m
AREA: 12.91 m² • PERIMETER: 14.80 m

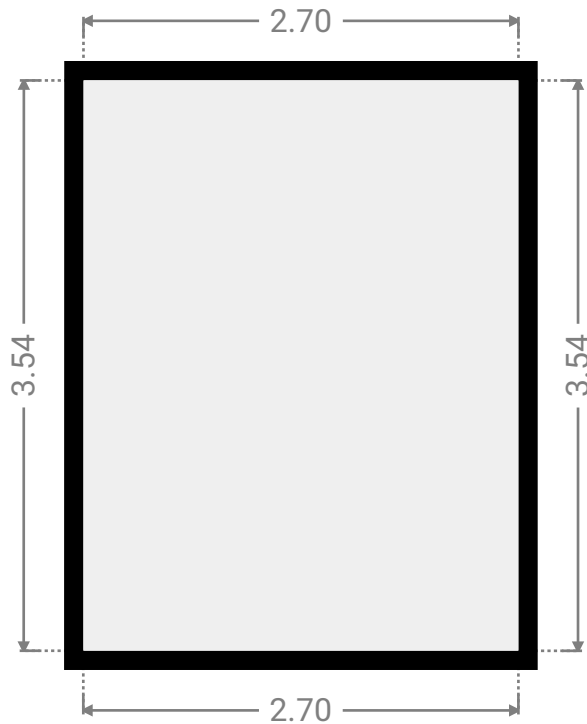
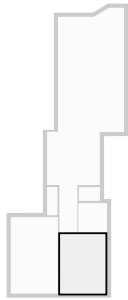


Piers de Raveschootlaan

TOTAL AREA: 70.48 m² • LIVING AREA: 70.48 m² • FLOORS: 1 • ROOMS: 8

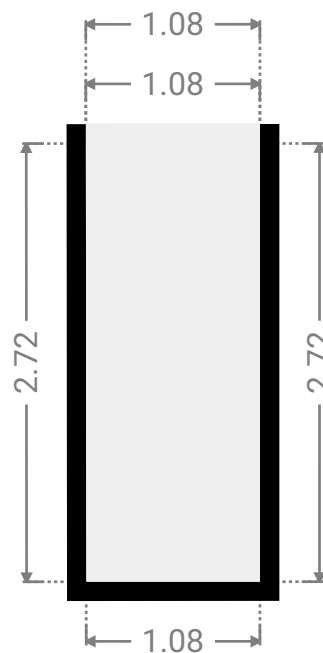
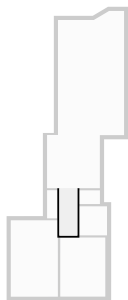
▼ Bedroom Ground Floor

WIDTH: 2.70 m • LENGTH: 3.54 m
AREA: 9.56 m² • PERIMETER: 12.48 m



▼ Hall Ground Floor

WIDTH: 1.08 m • LENGTH: 2.72 m
AREA: 2.94 m² • PERIMETER: 7.60 m

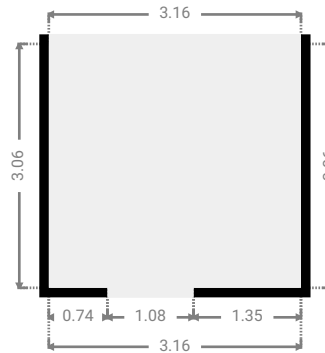
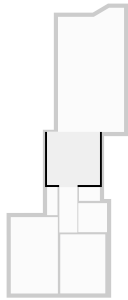


Piers de Raveschootlaan

TOTAL AREA: 70.48 m² • LIVING AREA: 70.48 m² • FLOORS: 1 • ROOMS: 8

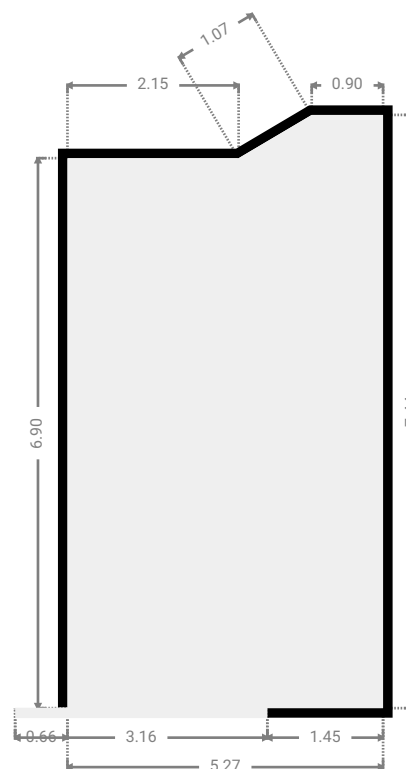
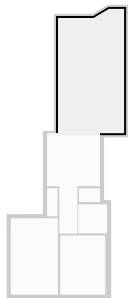
▼ Kitchen Ground Floor

WIDTH: 3.16 m • LENGTH: 3.06 m
AREA: 9.68 m² • PERIMETER: 12.45 m



▼ Living Room Ground Floor

WIDTH: 3.96 m • LENGTH: 7.44 m
AREA: 28.06 m² • PERIMETER: 22.41 m

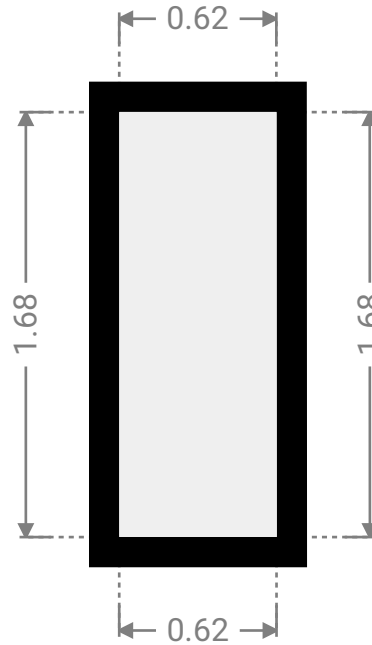
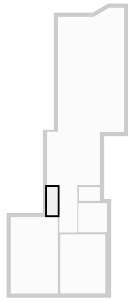


Piers de Raveschootlaan

TOTAL AREA: 70.48 m² • LIVING AREA: 70.48 m² • FLOORS: 1 • ROOMS: 8

▼ Other Ground Floor

WIDTH: 0.62 m • LENGTH: 1.68 m
AREA: 1.05 m² • PERIMETER: 4.61 m



▼ Toilet Ground Floor

WIDTH: 1.26 m • LENGTH: 0.82 m
AREA: 1.03 m² • PERIMETER: 4.16 m

