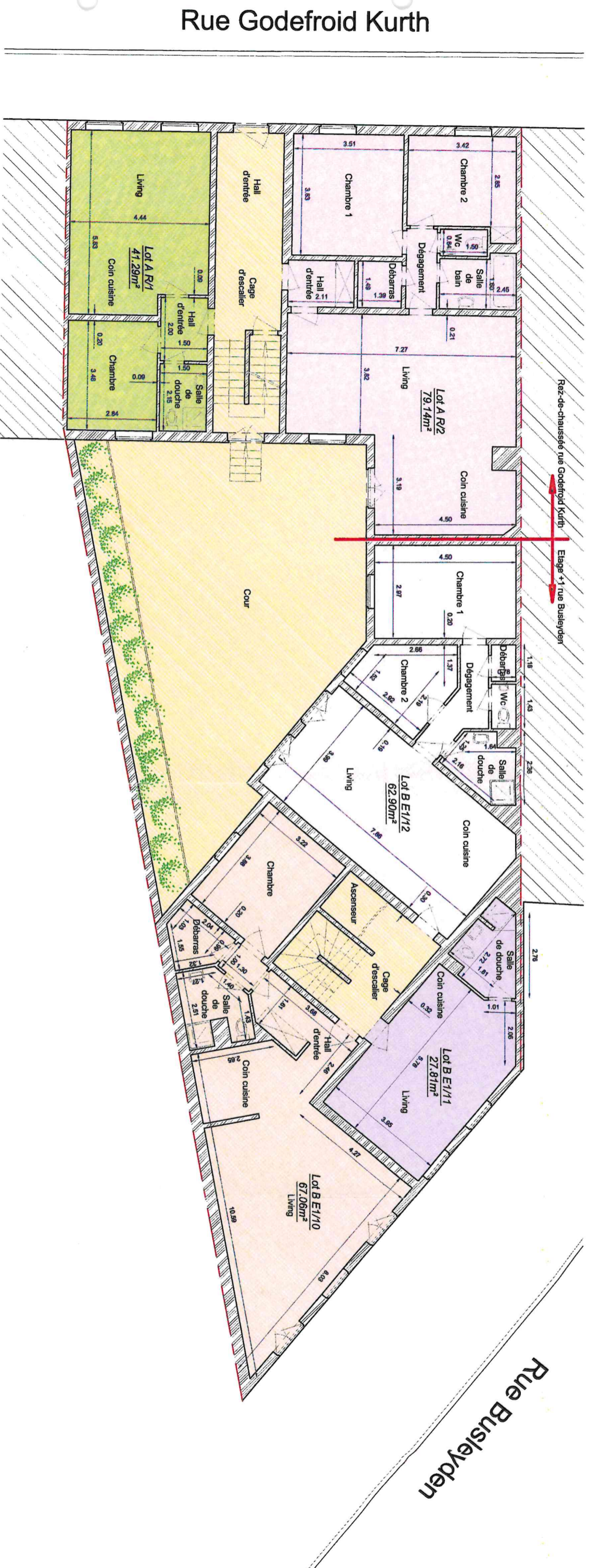


PLAN DE DIVISION

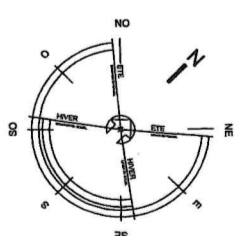
Rez-de-chaussée rue Godefroid Kurth &
Etage +1 rue Busleyden

Rue Godefroid Kurth 15 & Rue Busleyden 7 - 6700 Arlon

1ère Division - Section A - Parcelle 816/r



	Communs
	Superficie nette "Lot A R/1": 41.29 m ²
	Superficie nette "Lot A R/2": 79.14 m ²
	Superficie nette "Lot B E1/12": 62.90 m ²
	Superficie nette "Lot B E1/11": 27.81 m ²
	Superficie nette "Lot B E1/10": 67.06 m ²

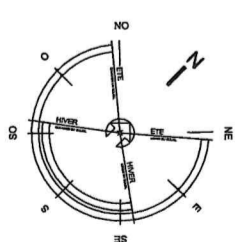


Laurent Rysman
Géomètre - Expert
Géo 71022

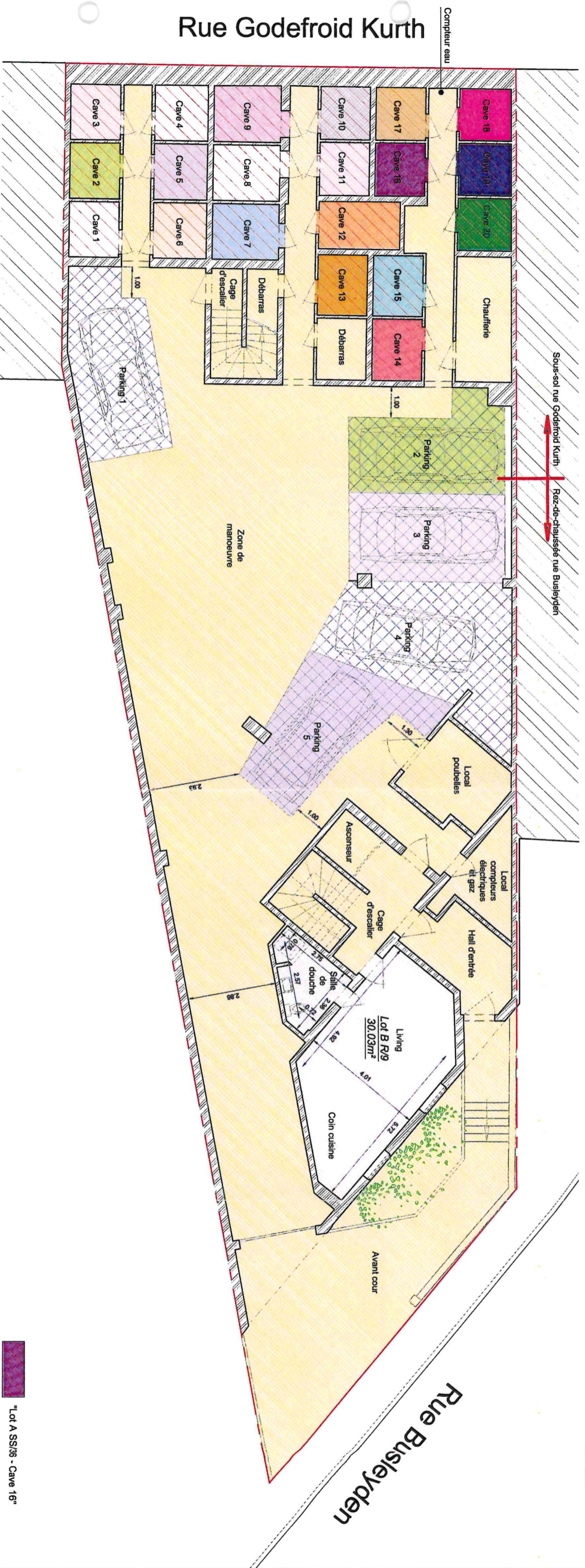
PLAN DE DIVISION

Sous-sol rue Godefroid Kurth & Rez-de-chaussée rue Busleyden

Rue Godefroid Kurth 15 & Rue Busleyden 7 - 6700 Arlon
1ère Division - Section A - Parcelle 816/r



Laurent Rysman
Géomètre - Expert
Cao 71022



	Communs		"Lot A SS/28 - Cave 8"		"Lot A SS/36 - Cave 16"
	Superficie nette		"Lot A SS/29 - Cave 9"		"Lot A SS/37 - Cave 17"
	"Lot B R/9" - 30.03 m²		"Lot A SS/30 - Cave 10"		"Lot A SS/38 - Cave 18"
	"Lot A SS/21 - Cave 1"		"Lot A SS/31 - Cave 11"		"Lot A SS/39 - Cave 19"
	"Lot A SS/22 - Cave 2"		"Lot A SS/32 - Cave 12"		"Lot A SS/40 - Cave 20"
	"Lot A SS/23 - Cave 3"		"Lot A SS/33 - Cave 13"		Superficie nette
	"Lot A SS/24 - Cave 4"		"Lot A SS/34 - Cave 14"		"Lot A SS/41 - Park 1" - 15.48m²
	"Lot A SS/25 - Cave 5"		"Lot A SS/35 - Cave 15"		Superficie nette
	"Lot A SS/26 - Cave 6"				"Lot A SS/42 - Park 2" - 13.52m²
	"Lot A SS/27 - Cave 7"				Superficie nette
					"Lot B R/43 - Park 3" - 14.03m²
					Superficie nette
					"Lot B R/44 - Park 4" - 22.23m²
					Superficie nette
					"Lot B R/45 - Park 5" - 15.66m²