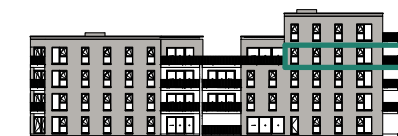
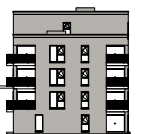
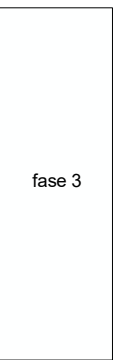
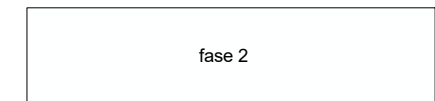
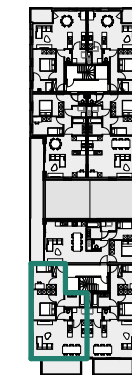
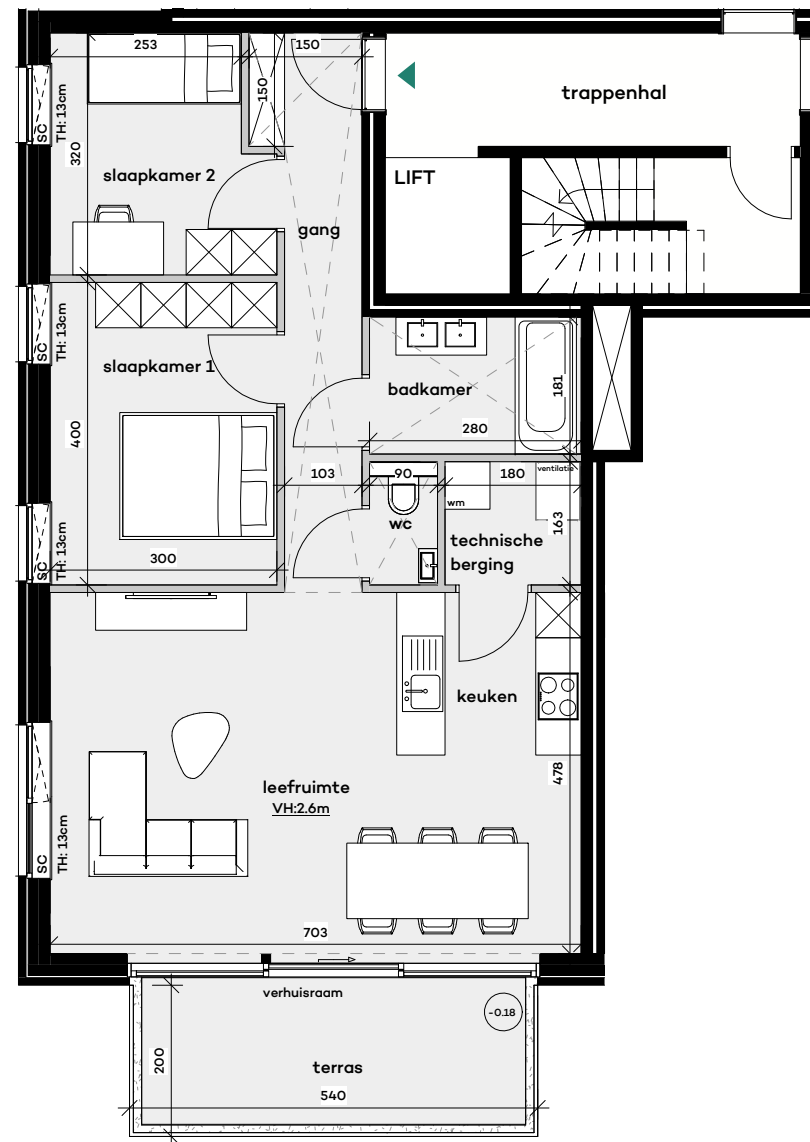


# Heizijde

APPARTEMENTEN

HEI.app.I.03.a

basisplan



Meubilair illustratief - maten richtgevend  
Keuken en technische berging: maatvoering en inrichting indicatief

sc = screen  
vrije hoogte verlaagde plafonds : minimaal 2.4m

17/09/2020

**TRIAS**  
ARCHITECTEN

inlichtingen & verkoop  
03 260 95 60