

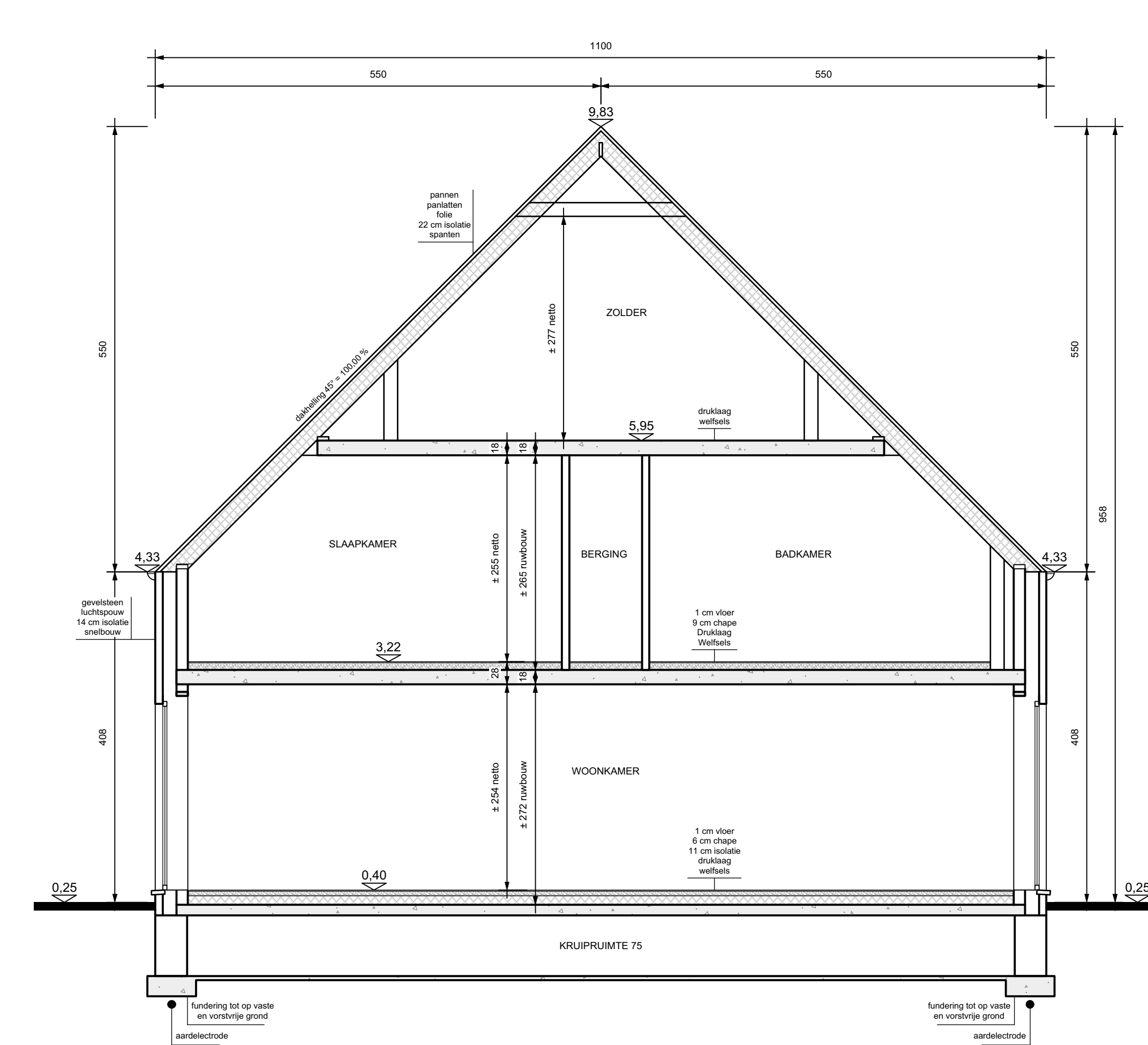
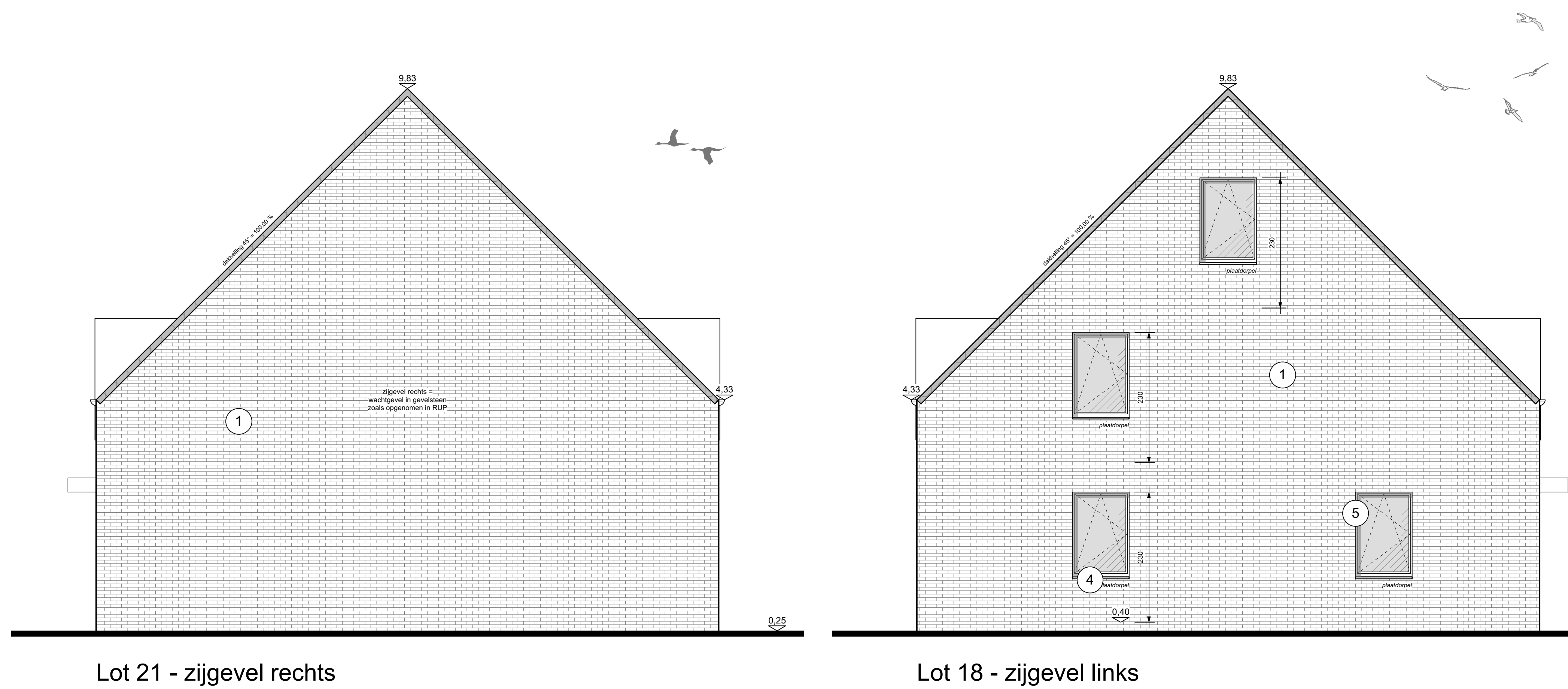
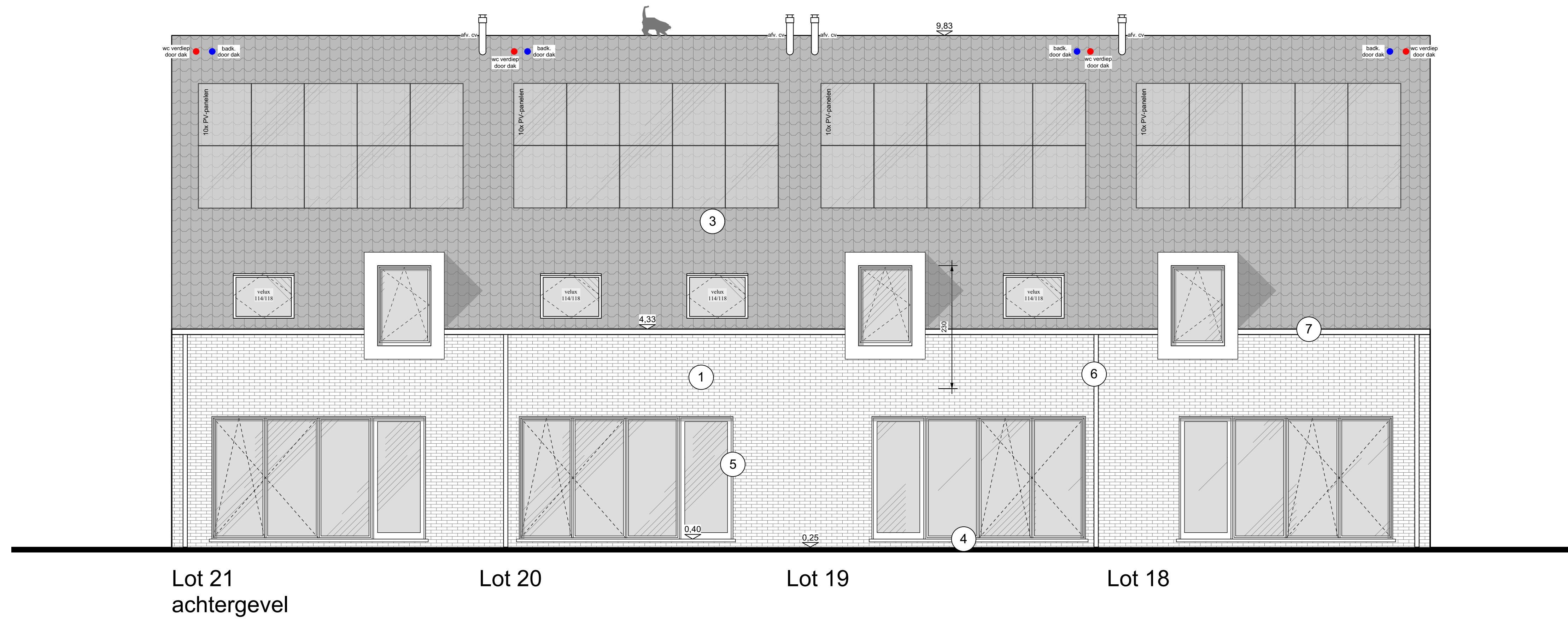
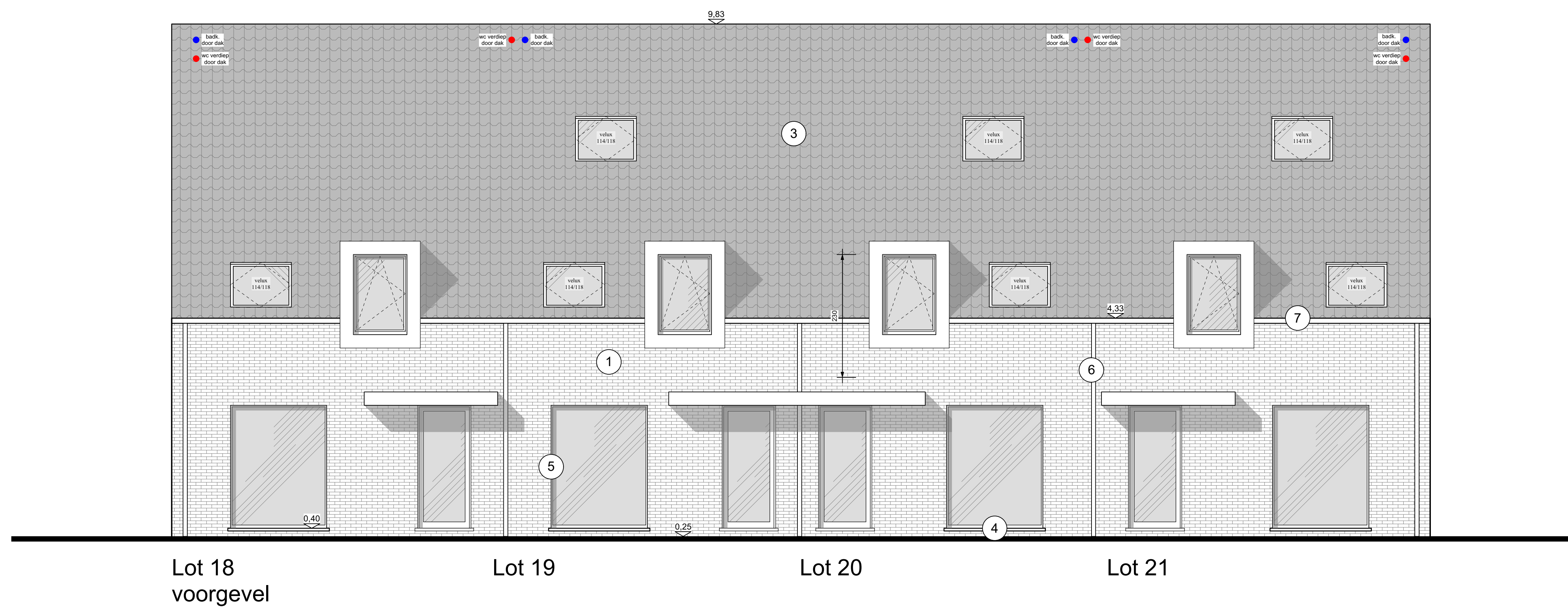
Gemeente	Mol
Opdracht	Park de Broqueville 21 woningen 26 appartementen 1 commerciële ruimte ondergrondse parking ligging : hoek Schansstraat & Collegestraat kadastraal : sectie F, 4de afdeling, nrs. 597r, 596d, 596e, 620a, 620m, 621h, 624h

Opdrachtgever	Rik De Keyser Merksplassesteenweg 18 2310 Rijkevorsel Tel.: 03/340.29.10 Fax: 03/314.05.88 www.rdk.be rdkbouw@rdk.be	Architect	Architectenbureau PEETERS, VAN GILS & VERDONCK Burgerlijk vennootschap met de handelsvorm van een bvba - RPR Turnhout Leest nr. 3 bus 2, 2330 Merksplas Tel: 014/63.40.85 Fax: 014/67.38.60 Jan Peeters: Architect - Zaakvoerder Ben van Gils: Architect - Zaakvoerder Geert Verdonck: Architect - Zaakvoerder
---------------	---	-----------	--

Inhoud	Gevels - doorsnede 18-21
--------	--------------------------

Wijzigingen 1108/2018: naar ontwerp 2908/2021: wijzigingen - vaste trap naar zolder 29/08/2021: ontwerp 10, 10.2a, 10.2b, 10.2c, 10.2d, 10.2e, 10.2f, 10.2g, 10.2h, 10.2i, 10.2j, 10.2k, 10.2l, 10.2m, 10.2n, 10.2o, 10.2p, 10.2q, 10.2r, 10.2s, 10.2t, 10.2u, 10.2v, 10.2w, 10.2x, 10.2y, 10.2z, 10.2aa, 10.2ab, 10.2ac, 10.2ad, 10.2ae, 10.2af, 10.2ag, 10.2ah, 10.2ai, 10.2aj, 10.2ak, 10.2al, 10.2am, 10.2an, 10.2ao, 10.2ap, 10.2aq, 10.2ar, 10.2as, 10.2at, 10.2au, 10.2av, 10.2aw, 10.2ax, 10.2ay, 10.2az, 10.2ba, 10.2bb, 10.2bc, 10.2bd, 10.2be, 10.2bf, 10.2bg, 10.2bh, 10.2bi, 10.2bj, 10.2bk, 10.2bl, 10.2bm, 10.2bn, 10.2bo, 10.2bp, 10.2bq, 10.2br, 10.2bs, 10.2bt, 10.2bu, 10.2bv, 10.2bw, 10.2bx, 10.2by, 10.2bz, 10.2ca, 10.2cb, 10.2cc, 10.2cd, 10.2ce, 10.2cf, 10.2cg, 10.2ch, 10.2ci, 10.2cj, 10.2ck, 10.2cl, 10.2cm, 10.2cn, 10.2co, 10.2cp, 10.2cq, 10.2cr, 10.2cs, 10.2ct, 10.2cu, 10.2cv, 10.2cw, 10.2cx, 10.2cy, 10.2cz, 10.2da, 10.2db, 10.2dc, 10.2dd, 10.2de, 10.2df, 10.2dg, 10.2dh, 10.2di, 10.2dj, 10.2dk, 10.2dl, 10.2dm, 10.2dn, 10.2do, 10.2dp, 10.2dq, 10.2dr, 10.2ds, 10.2dt, 10.2du, 10.2dv, 10.2dw, 10.2dx, 10.2dy, 10.2dz, 10.2ea, 10.2eb, 10.2ec, 10.2ed, 10.2ee, 10.2ef, 10.2eg, 10.2eh, 10.2ei, 10.2ej, 10.2ek, 10.2el, 10.2em, 10.2en, 10.2eo, 10.2ep, 10.2eq, 10.2er, 10.2es, 10.2et, 10.2eu, 10.2ev, 10.2ew, 10.2ex, 10.2ey, 10.2ez, 10.2fa, 10.2fb, 10.2fc, 10.2fd, 10.2fe, 10.2ff, 10.2fg, 10.2fh, 10.2fi, 10.2fj, 10.2fk, 10.2fl, 10.2fm, 10.2fn, 10.2fo, 10.2fp, 10.2fq, 10.2fr, 10.2fs, 10.2ft, 10.2fu, 10.2fv, 10.2fw, 10.2fx, 10.2fy, 10.2fz, 10.2ga, 10.2gb, 10.2gc, 10.2gd, 10.2ge, 10.2gf, 10.2gg, 10.2gh, 10.2gi, 10.2gj, 10.2gk, 10.2gl, 10.2gm, 10.2gn, 10.2go, 10.2gp, 10.2gq, 10.2gr, 10.2gs, 10.2gt, 10.2gu, 10.2gv, 10.2gw, 10.2gx, 10.2gy, 10.2gz, 10.2ha, 10.2hb, 10.2hc, 10.2hd, 10.2he, 10.2hf, 10.2hg, 10.2hh, 10.2hi, 10.2hj, 10.2hk, 10.2hl, 10.2hm, 10.2hn, 10.2ho, 10.2hp, 10.2hq, 10.2hr, 10.2hs, 10.2ht, 10.2hu, 10.2hv, 10.2hw, 10.2hx, 10.2hy, 10.2hz, 10.2ia, 10.2ib, 10.2ic, 10.2id, 10.2ie, 10.2if, 10.2ig, 10.2ih, 10.2ii, 10.2ij, 10.2ik, 10.2il, 10.2im, 10.2in, 10.2io, 10.2ip, 10.2iq, 10.2ir, 10.2is, 10.2it, 10.2iu, 10.2iv, 10.2iw, 10.2ix, 10.2iy, 10.2iz, 10.2ja, 10.2jb, 10.2jc, 10.2jd, 10.2je, 10.2jf, 10.2jg, 10.2jh, 10.2ji, 10.2jj, 10.2jk, 10.2jl, 10.2jm, 10.2jn, 10.2jo, 10.2jp, 10.2jq, 10.2jr, 10.2js, 10.2jt, 10.2ju, 10.2jv, 10.2jw, 10.2jx, 10.2jy, 10.2jz, 10.2ka, 10.2kb, 10.2kc, 10.2kd, 10.2ke, 10.2kf, 10.2kg, 10.2kh, 10.2ki, 10.2kj, 10.2kl, 10.2km, 10.2kn, 10.2ko, 10.2kp, 10.2kq, 10.2kr, 10.2ks, 10.2kt, 10.2ku, 10.2kv, 10.2kw, 10.2kx, 10.2ky, 10.2kz, 10.2la, 10.2lb, 10.2lc, 10.2ld, 10.2le, 10.2lf, 10.2lg, 10.2lh, 10.2li, 10.2lj, 10.2lk, 10.2ll, 10.2lm, 10.2ln, 10.2lo, 10.2lp, 10.2lq, 10.2lr, 10.2ls, 10.2lt, 10.2lu, 10.2lv, 10.2lw, 10.2lx, 10.2ly, 10.2lz, 10.2ma, 10.2mb, 10.2mc, 10.2md, 10.2me, 10.2mf, 10.2mg, 10.2mh, 10.2mi, 10.2mj, 10.2mk, 10.2ml, 10.2mm, 10.2mn, 10.2mo, 10.2mp, 10.2mq, 10.2mr, 10.2ms, 10.2mt, 10.2mu, 10.2mv, 10.2mw, 10.2mx, 10.2my, 10.2mz, 10.2na, 10.2nb, 10.2nc, 10.2nd, 10.2ne, 10.2nf, 10.2ng, 10.2nh, 10.2ni, 10.2nj, 10.2nk, 10.2nl, 10.2nm, 10.2nn, 10.2no, 10.2np, 10.2nq, 10.2nr, 10.2ns, 10.2nt, 10.2nu, 10.2nv, 10.2nw, 10.2nx, 10.2ny, 10.2nz, 10.2oa, 10.2ob, 10.2oc, 10.2od, 10.2oe, 10.2of, 10.2og, 10.2oh, 10.2oi, 10.2oj, 10.2ok, 10.2ol, 10.2om, 10.2on, 10.2oo, 10.2op, 10.2oq, 10.2or, 10.2os, 10.2ot, 10.2ou, 10.2ov, 10.2ow, 10.2ox, 10.2oy, 10.2oz, 10.2pa, 10.2pb, 10.2pc, 10.2pd, 10.2pe, 10.2pf, 10.2pg, 10.2ph, 10.2pi, 10.2pj, 10.2pk, 10.2pl, 10.2pm, 10.2pn, 10.2po, 10.2pp, 10.2pq, 10.2pr, 10.2ps, 10.2pt, 10.2pu, 10.2pv, 10.2pw, 10.2px, 10.2py, 10.2pz, 10.2qa, 10.2qb, 10.2qc, 10.2qd, 10.2qe, 10.2qf, 10.2qg, 10.2qh, 10.2qi, 10.2qj, 10.2qk, 10.2ql, 10.2qm, 10.2qn, 10.2qo, 10.2qp, 10.2qq, 10.2qr, 10.2qs, 10.2qt, 10.2qu, 10.2qv, 10.2qw, 10.2qx, 10.2qy, 10.2qz, 10.2ra, 10.2rb, 10.2rc, 10.2rd, 10.2re, 10.2rf, 10.2rg, 10.2rh, 10.2ri, 10.2rj, 10.2rk, 10.2rl, 10.2rm, 10.2rn, 10.2ro, 10.2rp, 10.2rq, 10.2rr, 10.2rs, 10.2rt, 10.2ru, 10.2rv, 10.2rw, 10.2rx, 10.2ry, 10.2rz, 10.2sa, 10.2sb, 10.2sc, 10.2sd, 10.2se, 10.2sf, 10.2sg, 10.2sh, 10.2si, 10.2sj, 10.2sk, 10.2sl, 10.2sm, 10.2sn, 10.2so, 10.2sp, 10.2sq, 10.2sr, 10.2ss, 10.2st, 10.2su, 10.2sv, 10.2sw, 10.2sx, 10.2sy, 10.2sz, 10.2ta, 10.2tb, 10.2tc, 10.2td, 10.2te, 10.2tf, 10.2tg, 10.2th, 10.2ti, 10.2tj, 10.2tk, 10.2tl, 10.2tm, 10.2tn, 10.2to, 10.2tp, 10.2tq, 10.2tr, 10.2ts, 10.2tt, 10.2tu, 10.2tv, 10.2tw, 10.2tx, 10.2ty, 10.2tz, 10.2ua, 10.2ub, 10.2uc, 10.2ud, 10.2ue, 10.2uf, 10.2ug, 10.2uh, 10.2ui, 10.2uj, 10.2uk, 10.2ul, 10.2um, 10.2un, 10.2uo, 10.2up, 10.2uq, 10.2ur, 10.2us, 10.2ut, 10.2uu, 10.2uv, 10.2uw, 10.2ux, 10.2uy, 10.2uz, 10.2va, 10.2vb, 10.2vc, 10.2vd, 10.2ve, 10.2vf, 10.2vg, 10.2vh, 10.2vi, 10.2vj, 10.2vk, 10.2vl, 10.2vm, 10.2vn, 10.2vo, 10.2vp, 10.2vq, 10.2vr, 10.2vs, 10.2vt, 10.2vu, 10.2vv, 10.2vw, 10.2vx, 10.2vy, 10.2vz, 10.2wa, 10.2wb, 10.2wc, 10.2wd, 10.2we, 10.2wf, 10.2wg, 10.2wh, 10.2wi, 10.2wj, 10.2wk, 10.2wl, 10.2wm, 10.2wn, 10.2wo, 10.2wp, 10.2wq, 10.2wr, 10.2ws, 10.2wt, 10.2wu, 10.2wv, 10.2ww, 10.2wx, 10.2wy, 10.2wz, 10.2xa, 10.2xb, 10.2xc, 10.2xd, 10.2xe, 10.2xf, 10.2xg, 10.2xh, 10.2xi, 10.2xj, 10.2xk, 10.2xl, 10.2xm, 10.2xn, 10.2xo, 10.2xp, 10.2xq, 10.2xr, 10.2xs, 10.2xt, 10.2xu, 10.2xv, 10.2xw, 10.2xx, 10.2xy, 10.2xz, 10.2ya, 10.2yb, 10.2yc, 10.2yd, 10.2ye, 10.2yf, 10.2yg, 10.2yh, 10.2yi, 10.2yj, 10.2yk, 10.2yl, 10.2ym, 10.2yn, 10.2yo, 10.2yp, 10.2yq, 10.2yr, 10.2ys, 10.2yt, 10.2yu, 10.2yv, 10.2yw, 10.2yx, 10.2yy, 10.2yz, 10.2za, 10.2zb, 10.2zc, 10.2zd, 10.2ze, 10.2zf, 10.2zg, 10.2zh, 10.2zi, 10.2zj, 10.2zk, 10.2zl, 10.2zm, 10.2zn, 10.2zo, 10.2zp, 10.2zq, 10.2zr, 10.2zs, 10.2zt, 10.2zu, 10.2zv, 10.2zw, 10.2zx, 10.2zy, 10.2zz	 WERKPLAATS ONDERWORPEN AAN DE REGISTRATIEVERPLICHTING
---	--

Schaal: 1/250	Getekend:	Dossiernr.
	Datum: 11.12.2018	Plan nr. 17/18



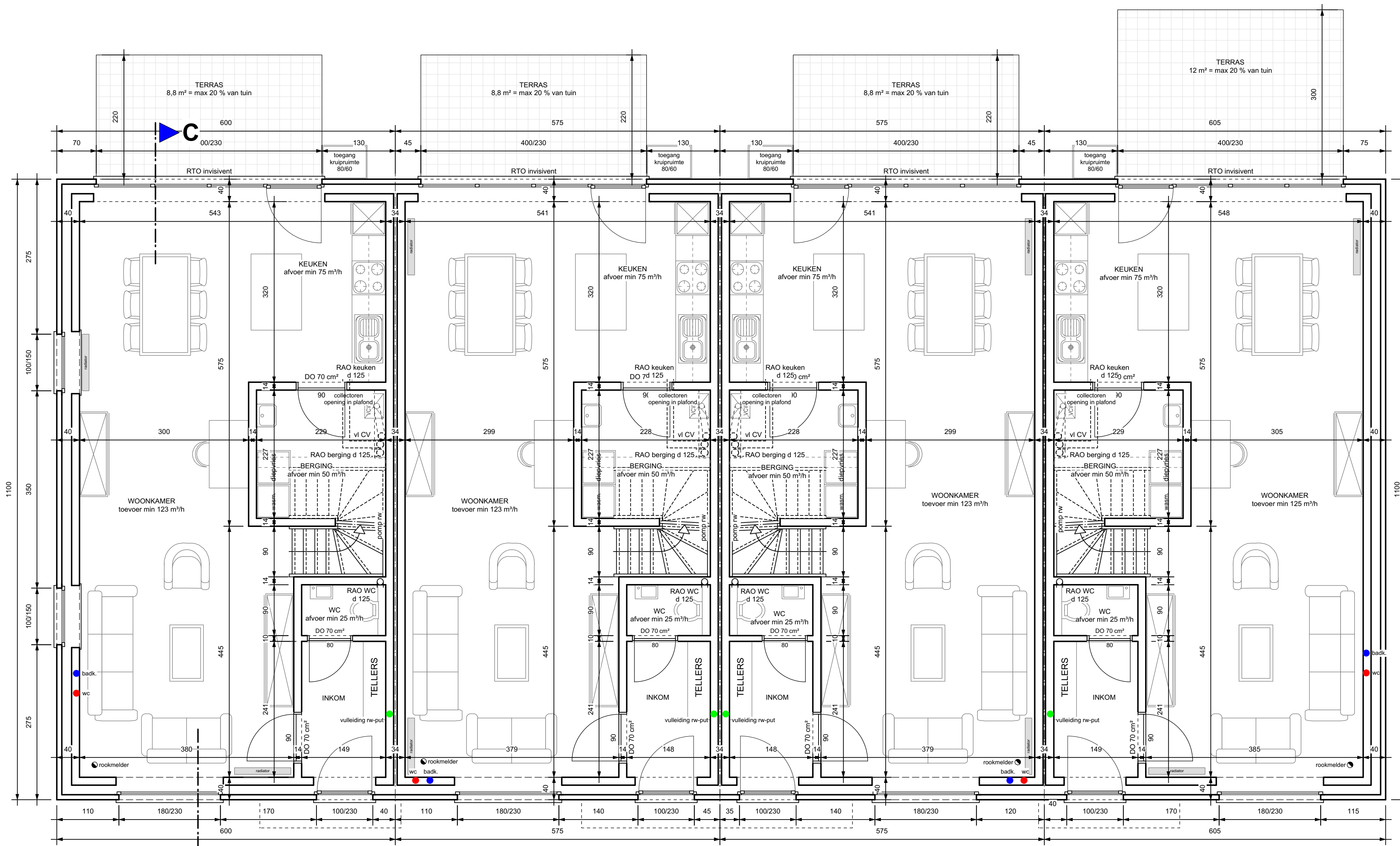
AANGIFTE VAN WERKEN

CHECKIN AT WORK

WERKPLAATS ONDERWORPEN AAN DE REGISTRATIEVERPLICHTING

1Y1-01XN7L6-TP-Z
Schanstraat
2400 Mol



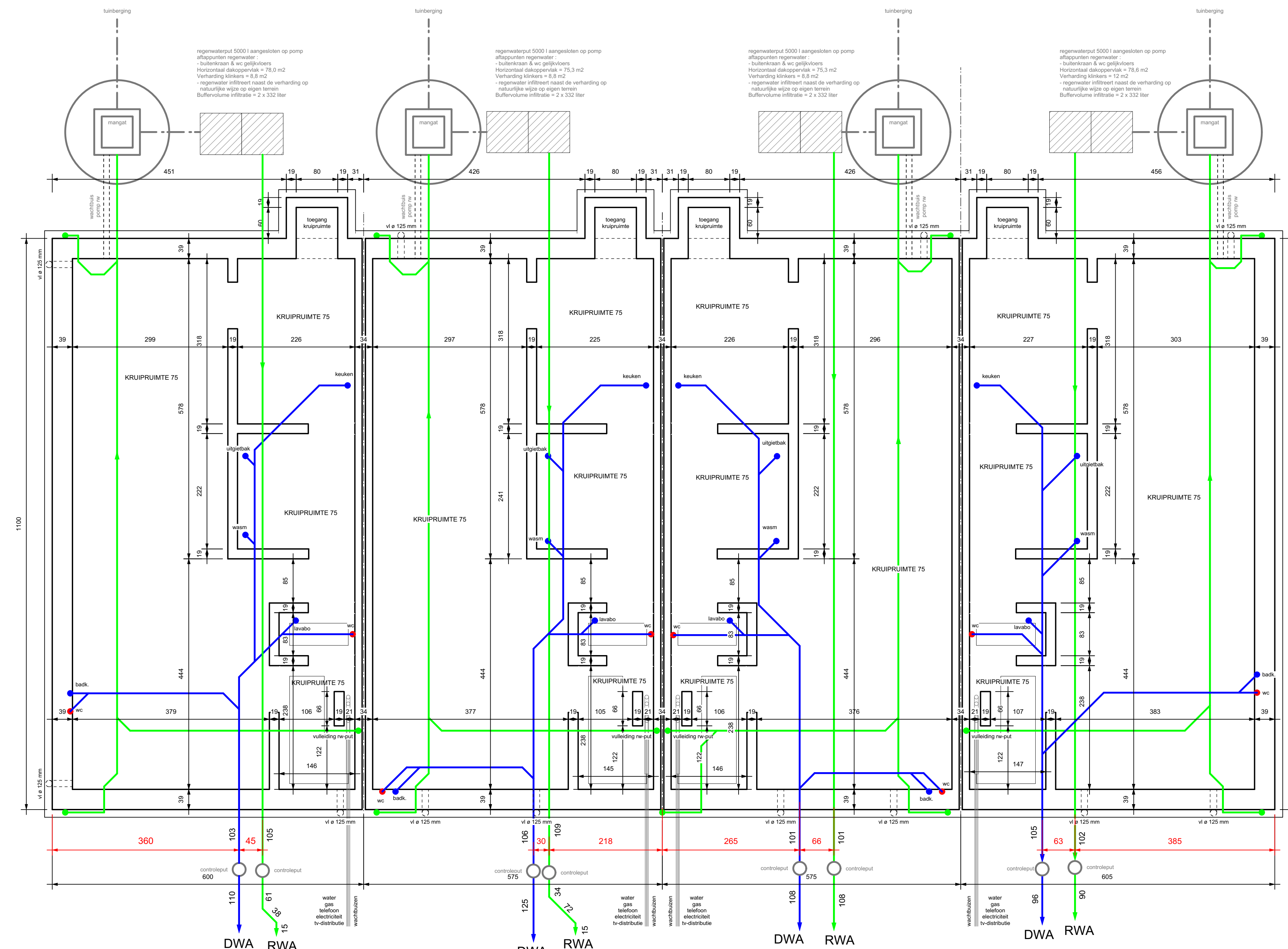
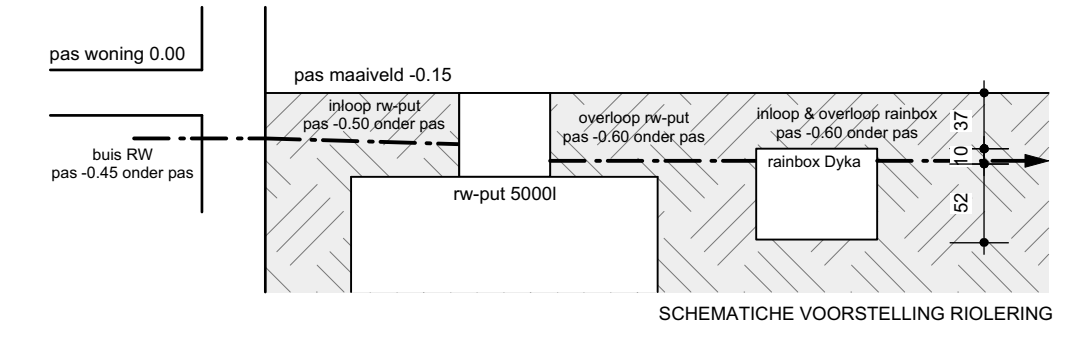


Lot 18
gelijkvloers

Lot 19

Lot 20

Lot 21



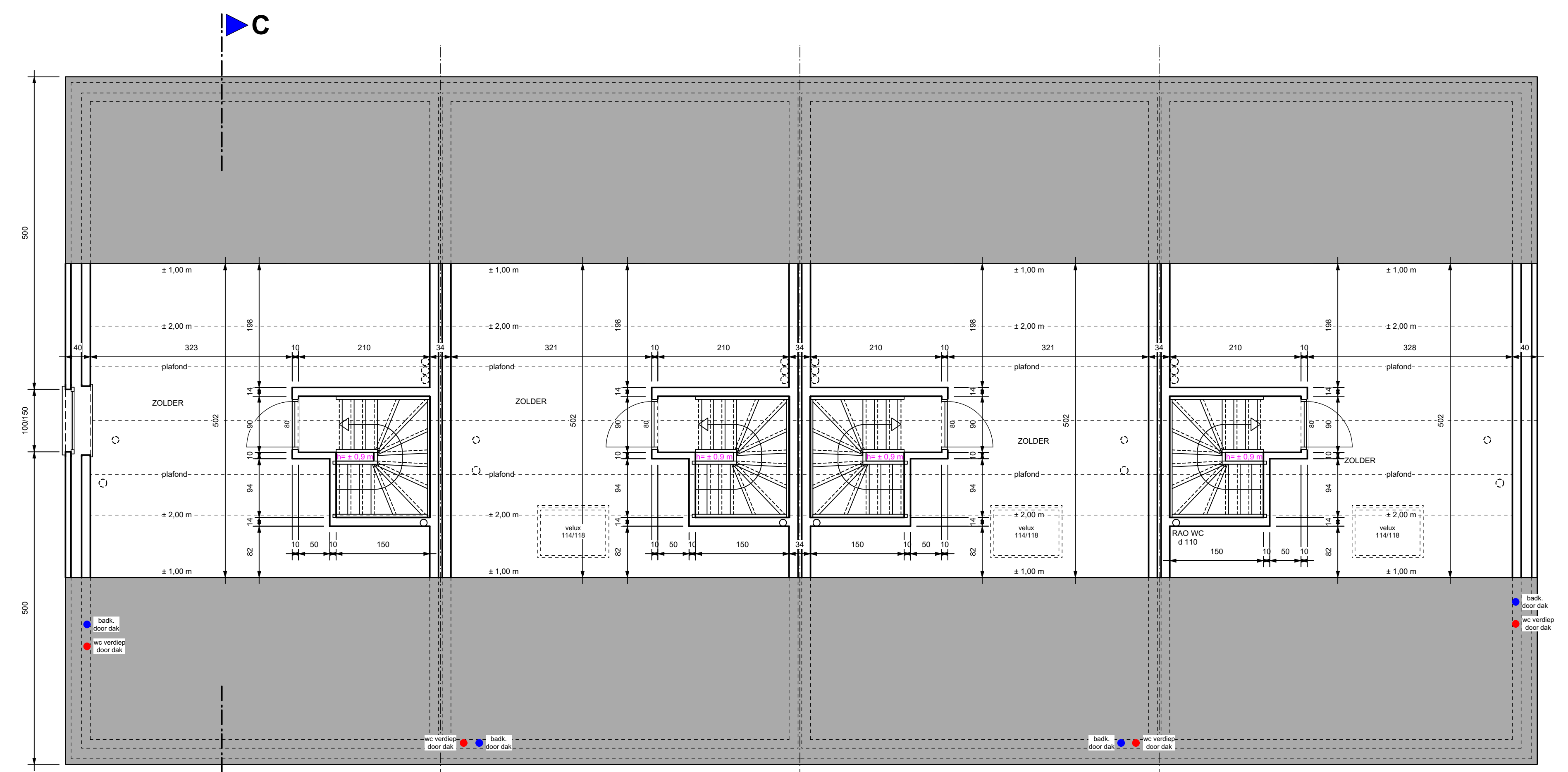
Lot 18

Lot 19

Lot 20

Lot 21

fundering en riolering

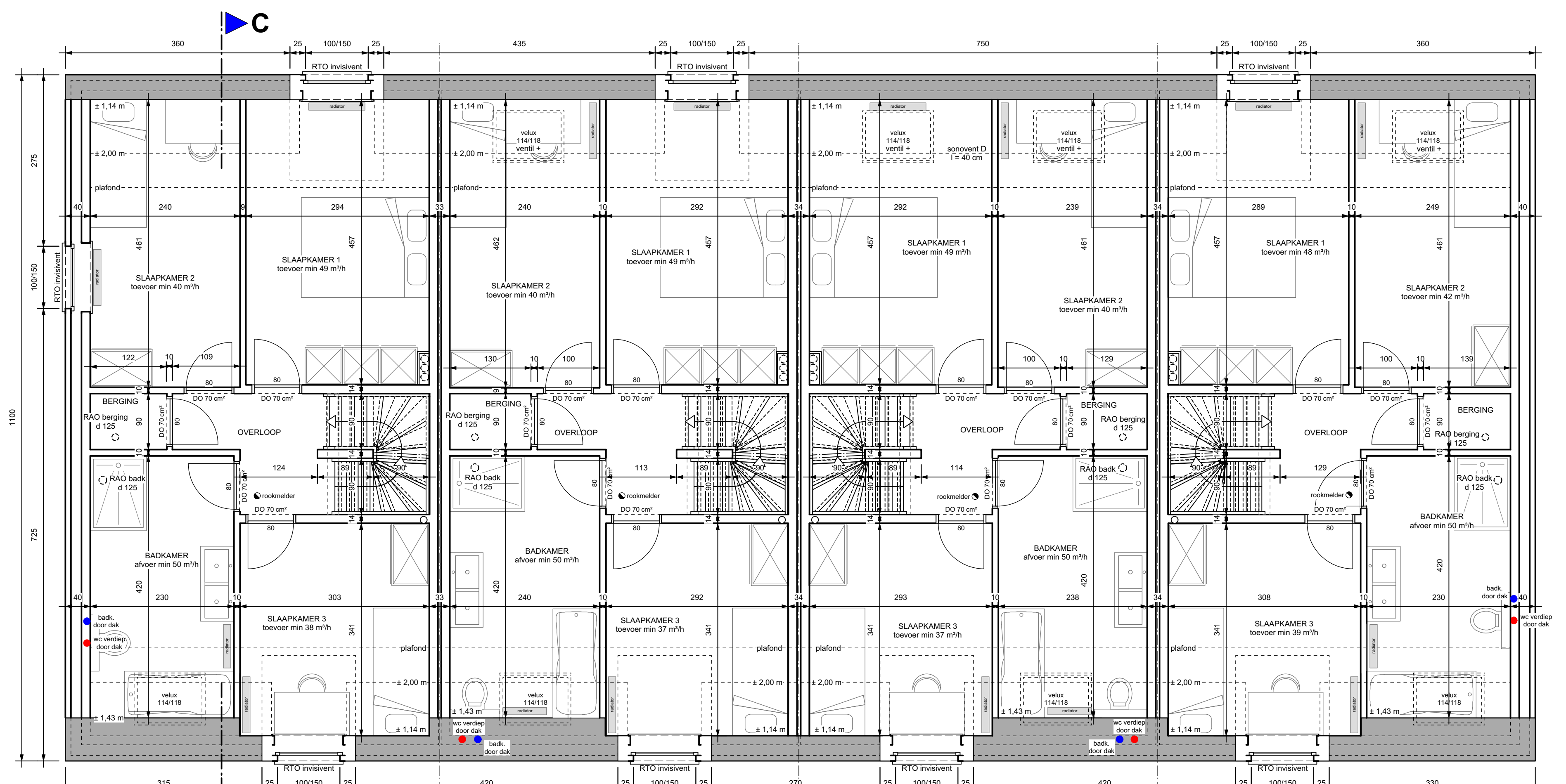


Lot 18
zolder

Lot 19

Lot 20

Lot 21



Lot 18
verdieping

Lot 19

Lot 20

Lot 21

AANGIFTE VAN WERKEN

CHECKINATWORK

WERKPLAATS ONDERWORPEN AAN DE REGISTRATIEVERPLICHTING

1Y1-01XN7L6-TP-Z
Schanstraat
2400 Mol



Gemeente	Mol
Opdracht	Park de Broqueville 21 woningen 26 appartementen 1 commerciële ruimte ondergrondse parking ligging : hoek Schansstraat & Collegestraat kadastraal : sectie F, 4de afdeling, nrs. 597f, 598d, 599e, 620a, 620m, 621h, 624h
Opdrachtgever	Architect
Rik De Keyser Merksplassteenweg 18 2310 Rijkevorsel Tel.: 03/340.29.10 Fax.: 03/314.05.88	Architectenbureau PEETERS, VAN GILS & VERDONCK Burgerlijk vennootschap met de handelsvorm van een bvba - RPR Turnhout Leest nr. 3 bus 2, 2330 Merksplas Tel.: 014/63.40.85 Fax: 014/67.38.60
RDK B O U W www.rdk.be rdkbouw@rdk.be	Jan Peeters: Architect - Zaakvoerder Ben van Gils: Architect - Zaakvoerder Geert Verdonck: Architect - Zaakvoerder
Inhoud	Grondplannen- fundering lot 18-21
Wijzigingen	CHECKINATWORK WERKPLAATS ONDERWORPEN AAN DE REGISTRATIEVERPLICHTING
Schaal: 1/250	Getekend: Dossiernr.
Datum: 11.12.2018	Plan nr. 18/18