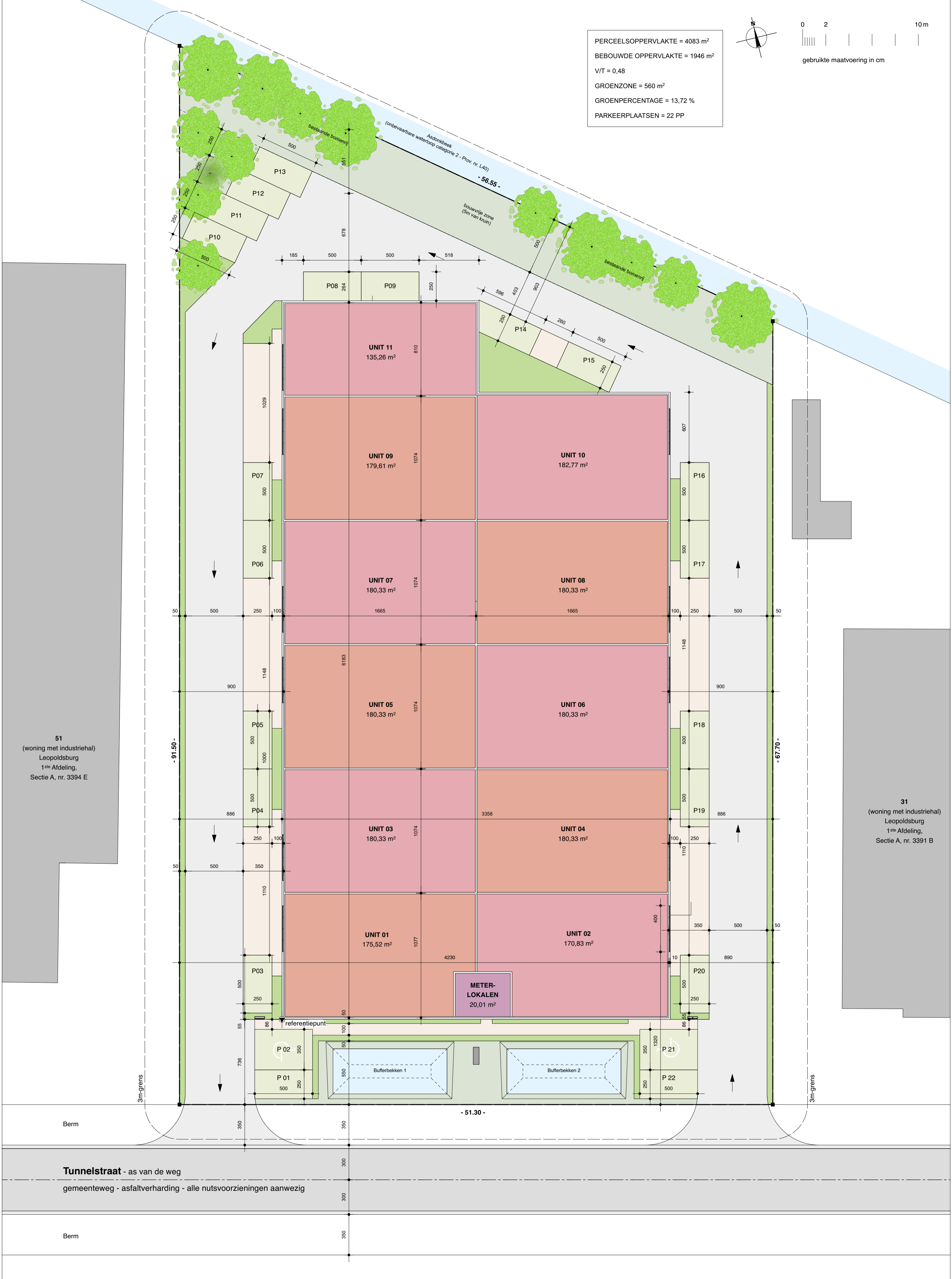
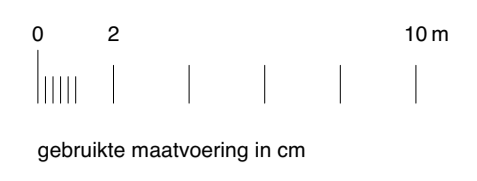
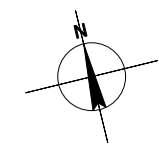


PERCEELSOPPERVLAKTE = 4083 m²
 BEBOUWDE OPPERVLAKTE = 1946 m²
 V/T = 0,48
 GROENZONE = 560 m²
 GROENPERCENTAGE = 13,72 %
 PARKEERPLAATSEN = 22 PP



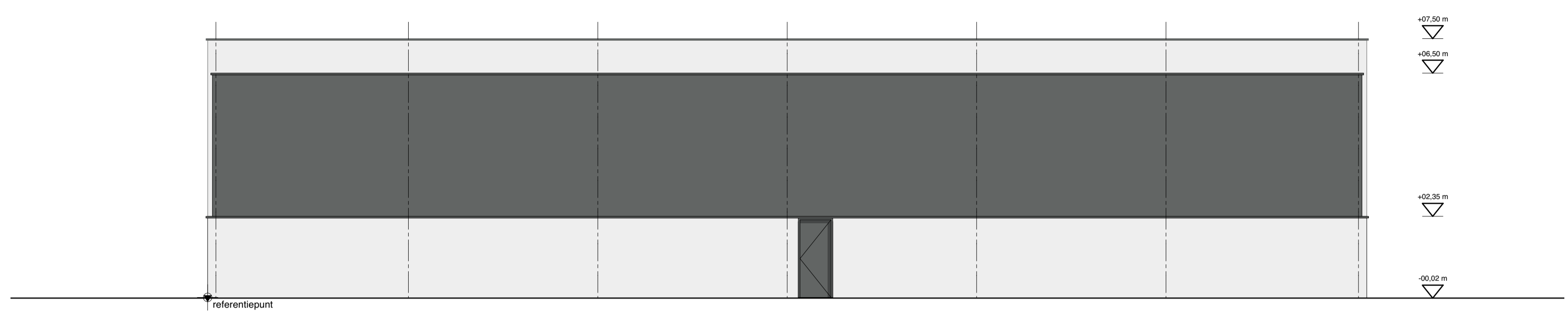
51
 (woning met industriehal)
 Leopoldsburg
 1^{ste} Afdeling,
 Sectie A, nr. 3394 E

31
 (woning met industriehal)
 Leopoldsburg
 1^{ste} Afdeling,
 Sectie A, nr. 3391 B

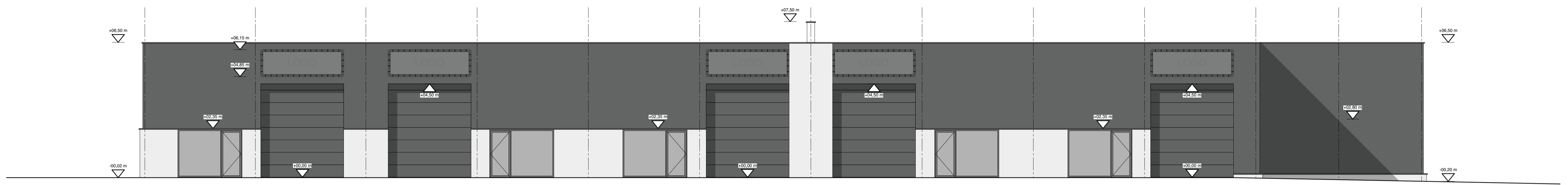
Berm

Tunnelstraat - as van de weg
 gemeenteweg - asfaltverharding - alle nutsvoorzieningen aanwezig

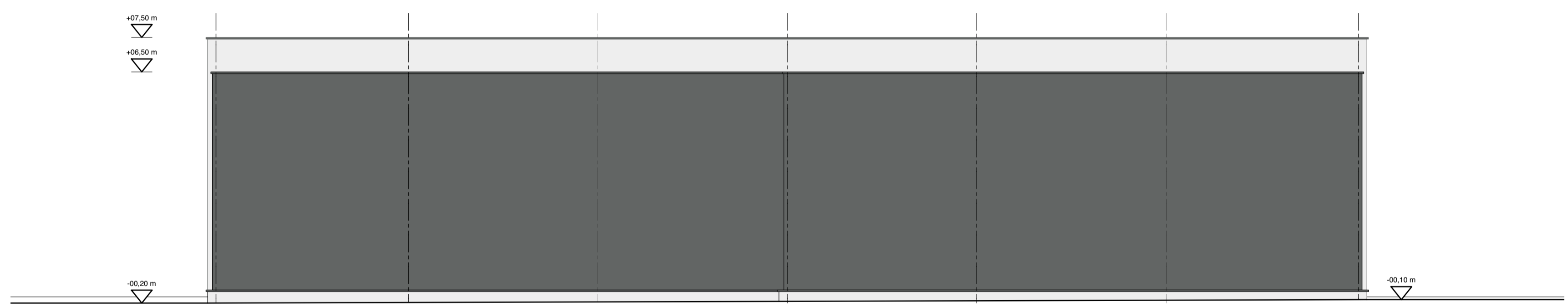
Berm



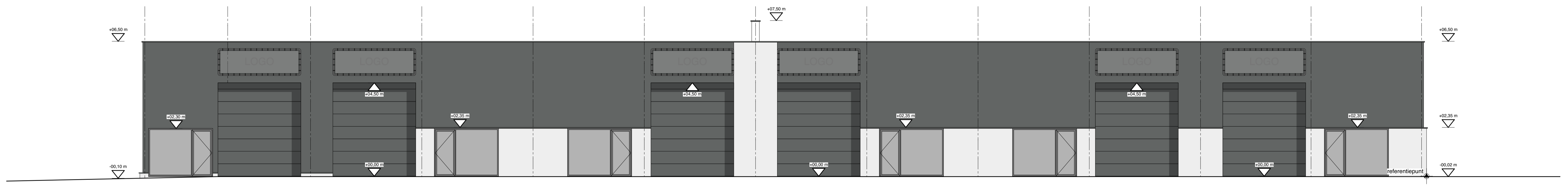
GEVELAANZICHT ZUID



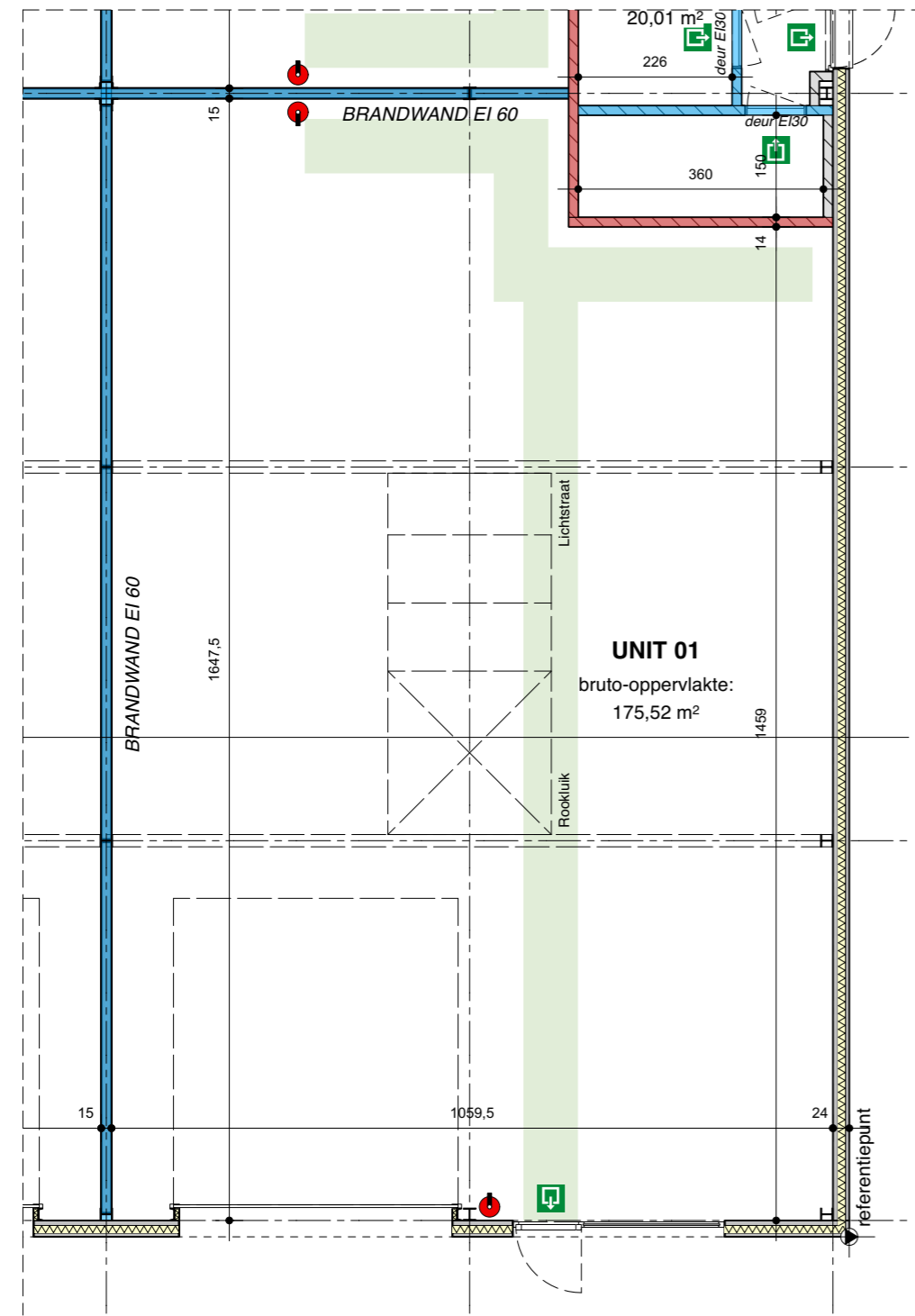
GEVELAANZICHT WEST



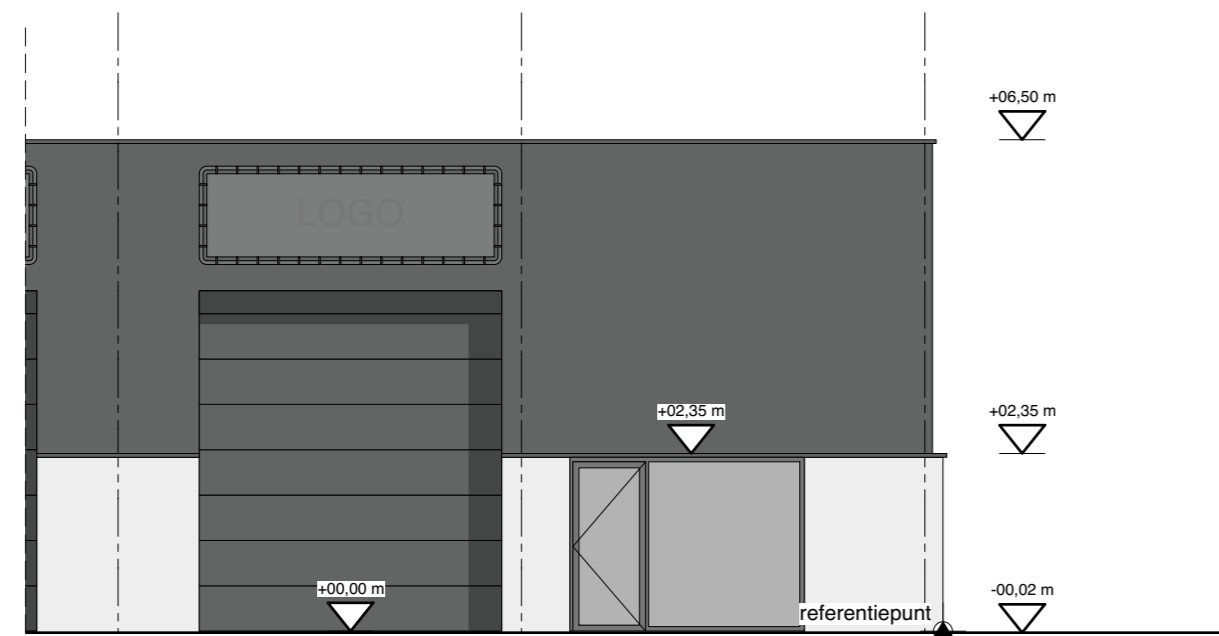
GEVELAANZICHT NOORD



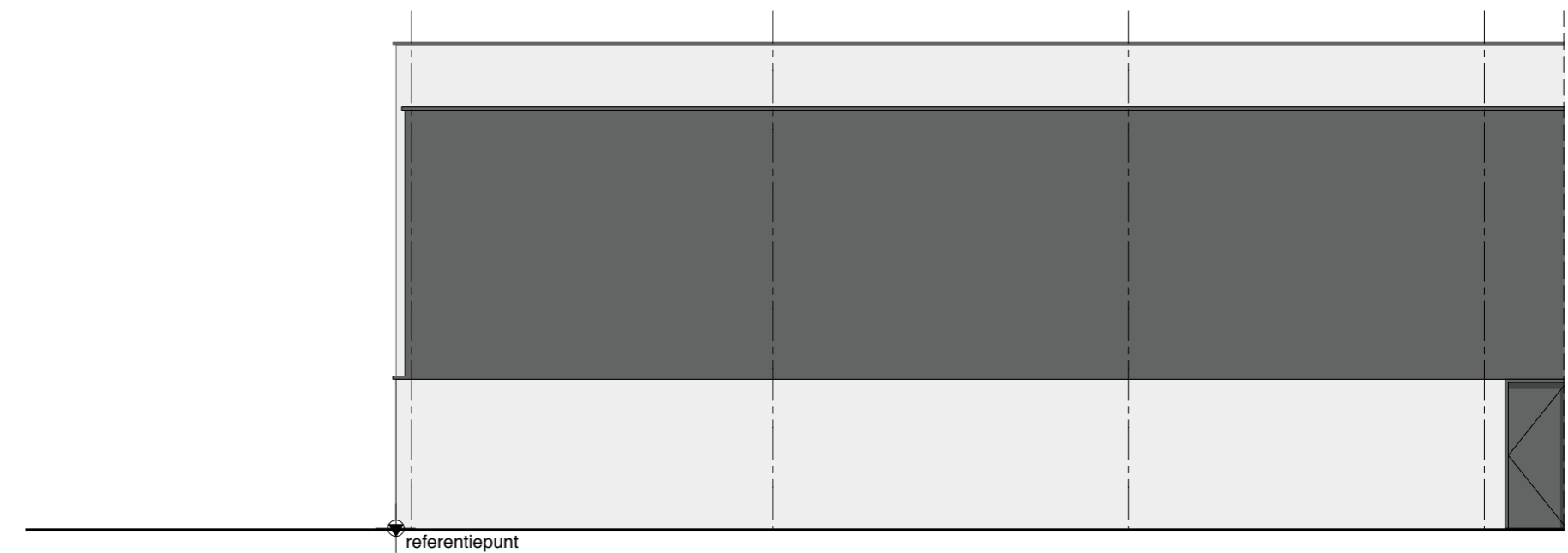
GEVELAANZICHT OOST



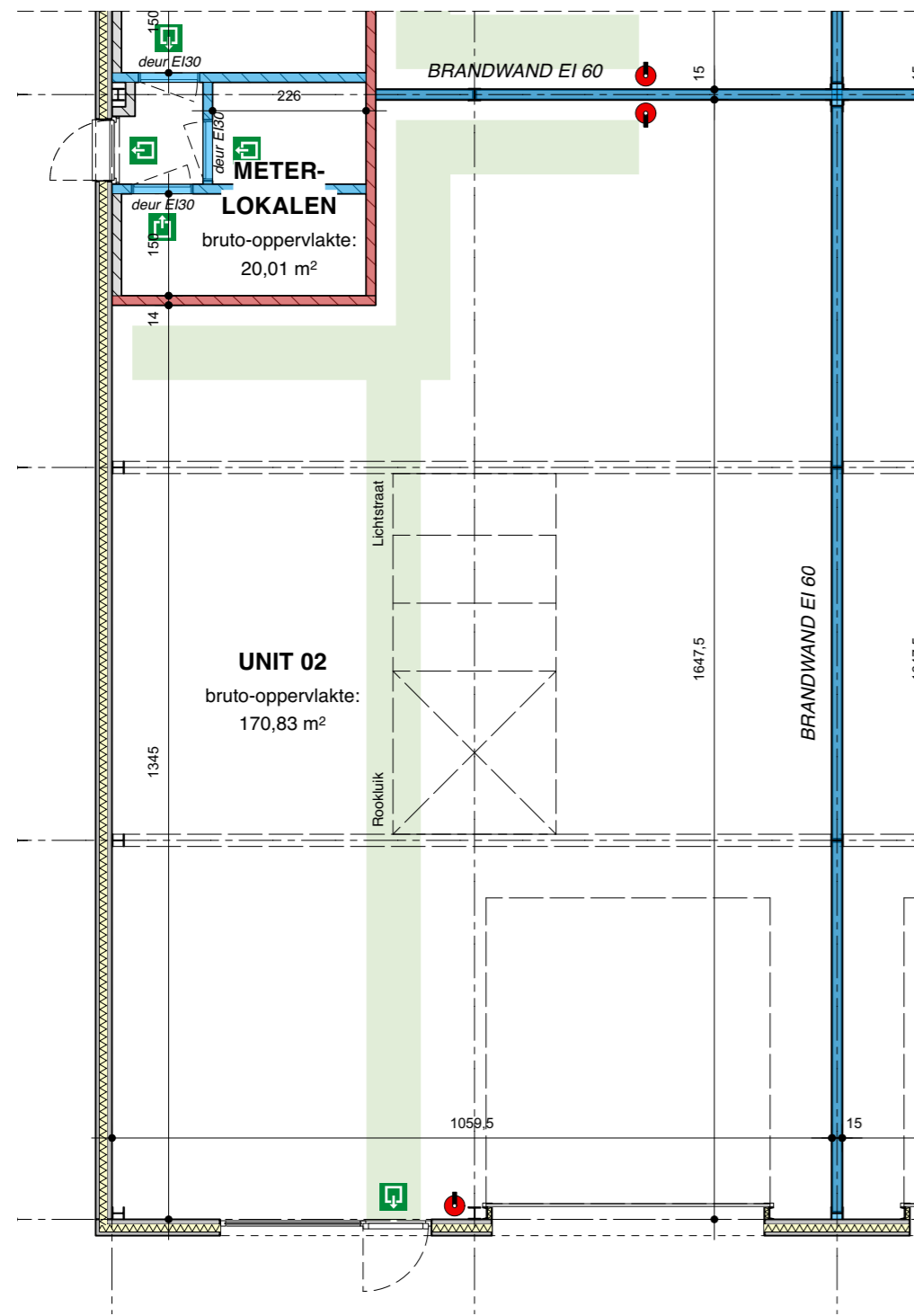
GRONDPLAN



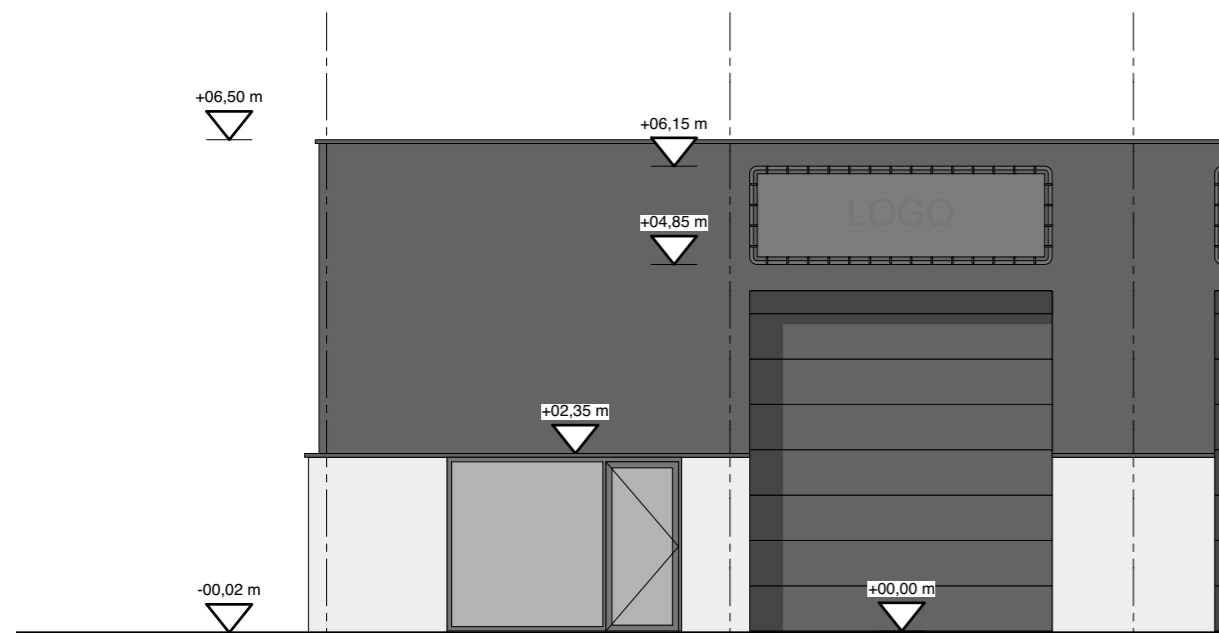
GEVELAANZICHT WEST



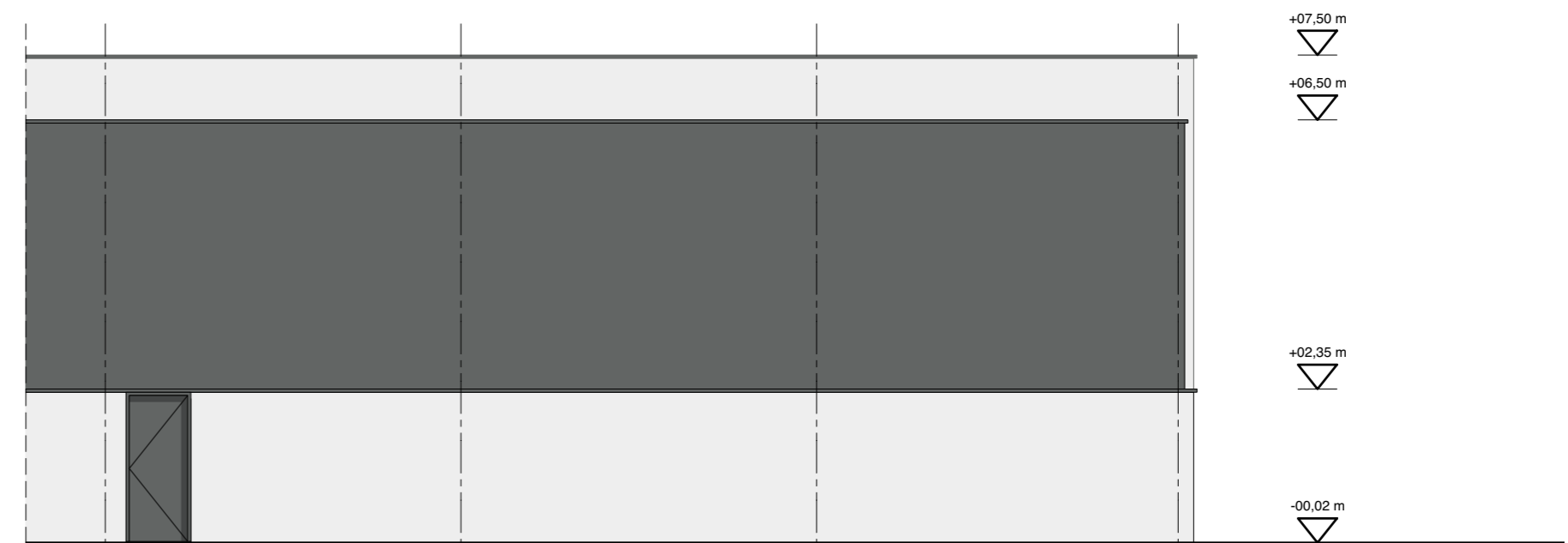
GEVELAANZICHT ZUID



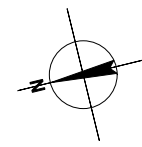
GRONDPLAN



GEVELAANZICHT OOST



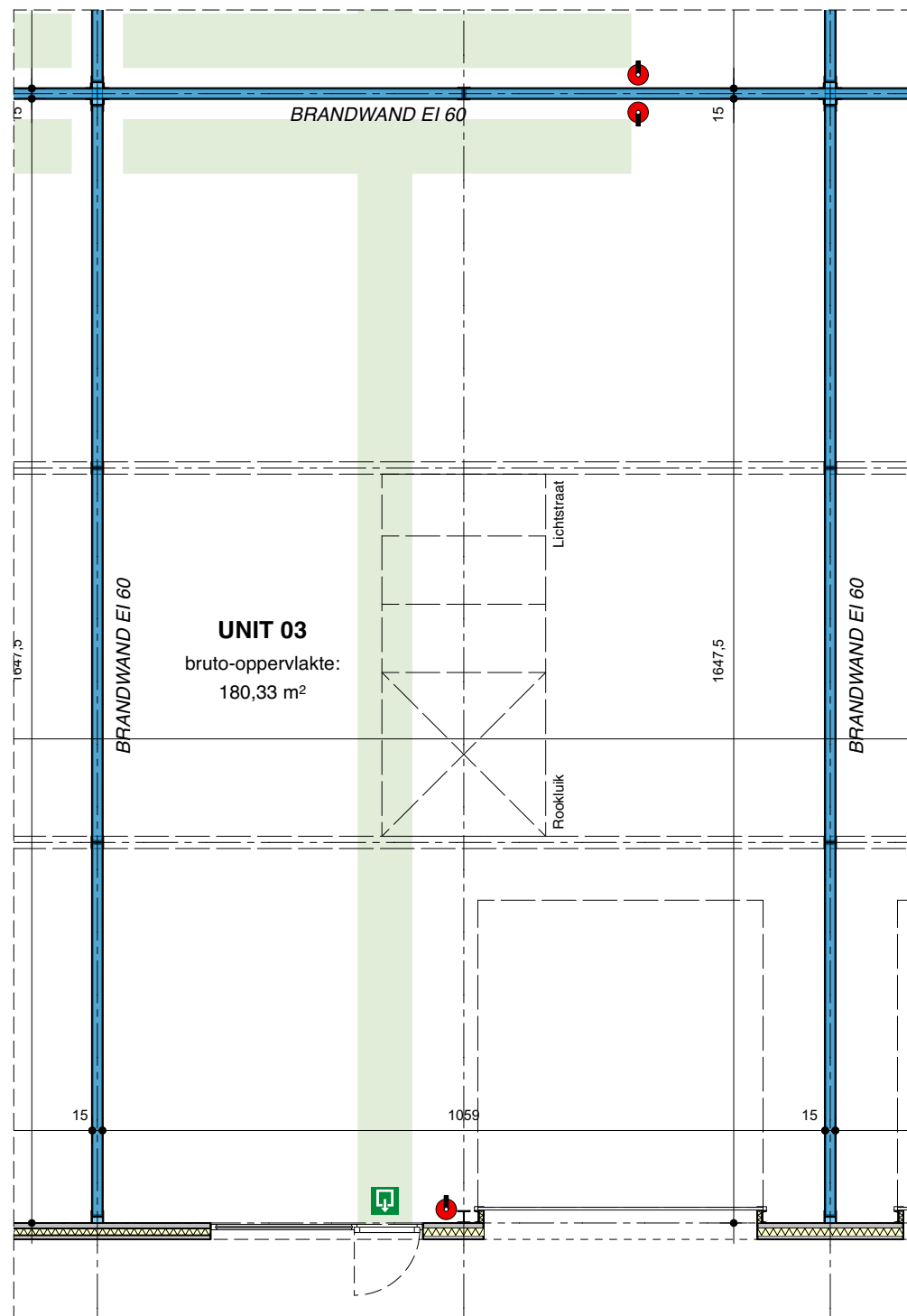
GEVELAANZICHT ZUID



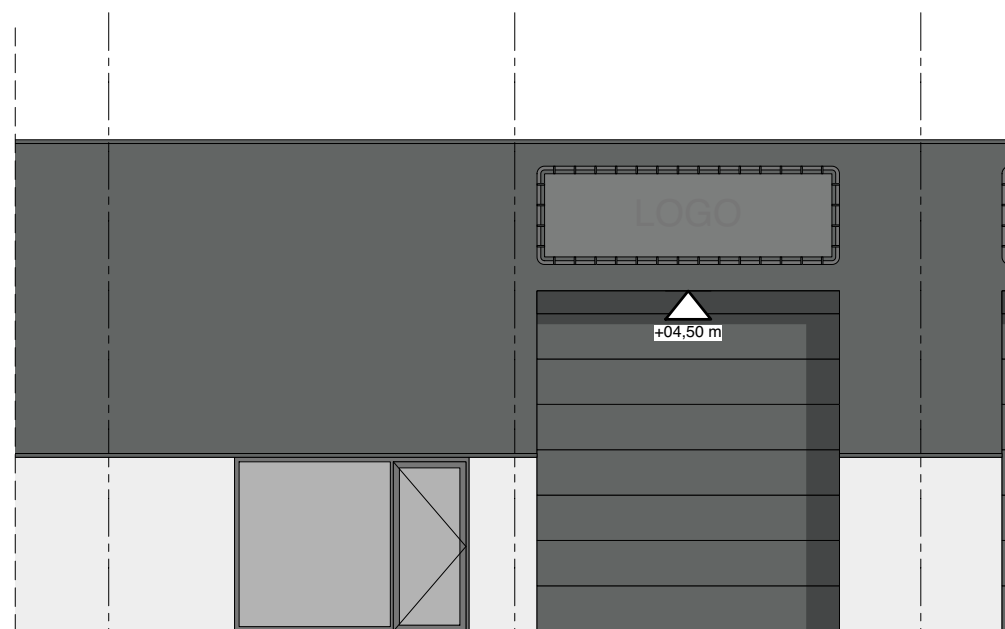
0 1 5 m



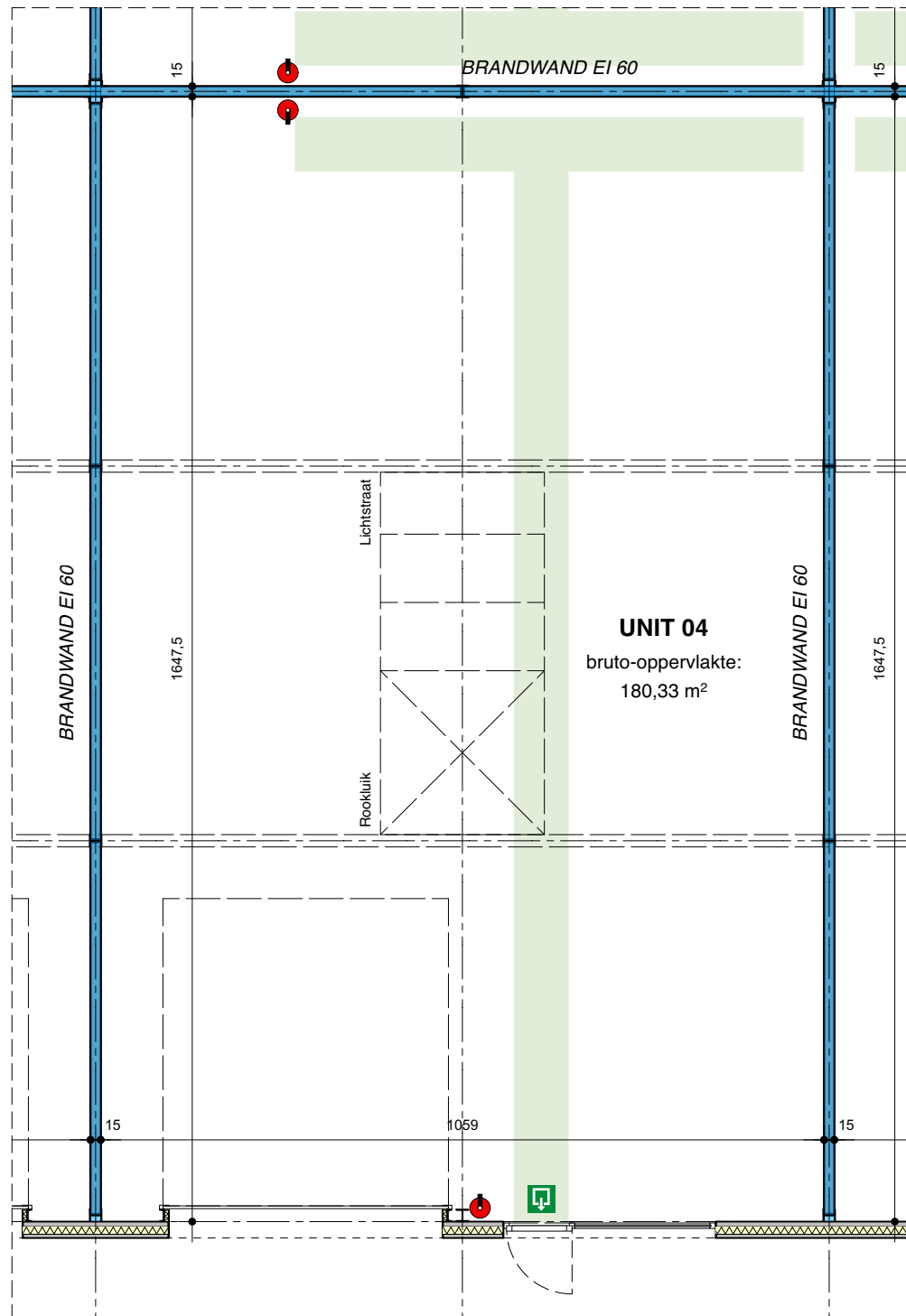
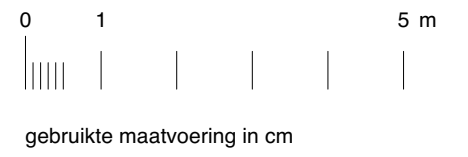
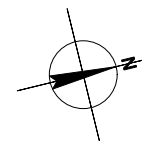
gebruikte maatvoering in cm



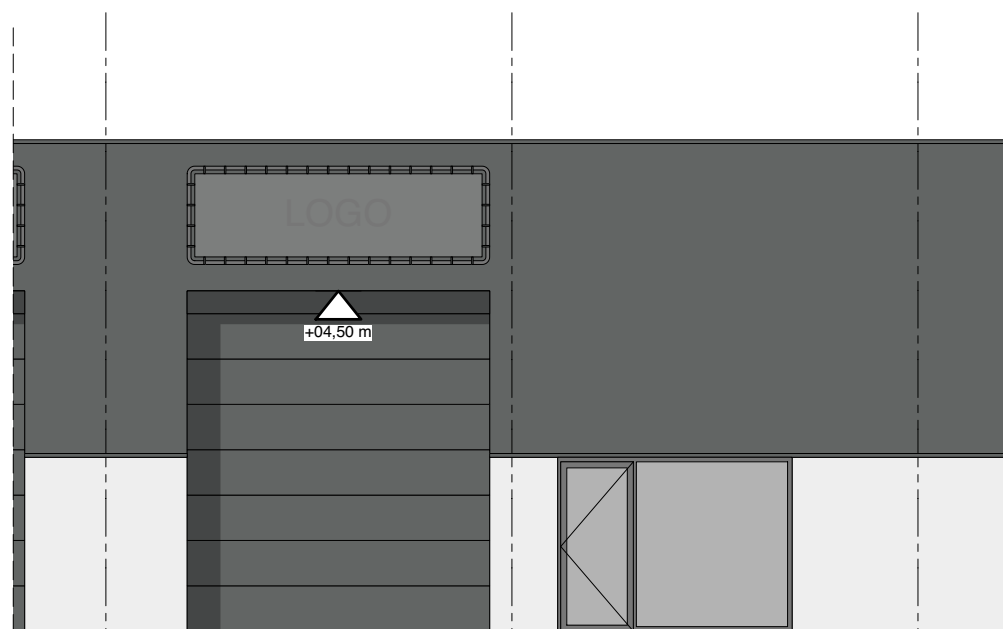
GRONDPLAN



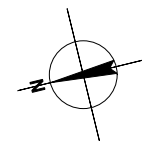
GEVELAANZICHT WEST



GRONDPLAN



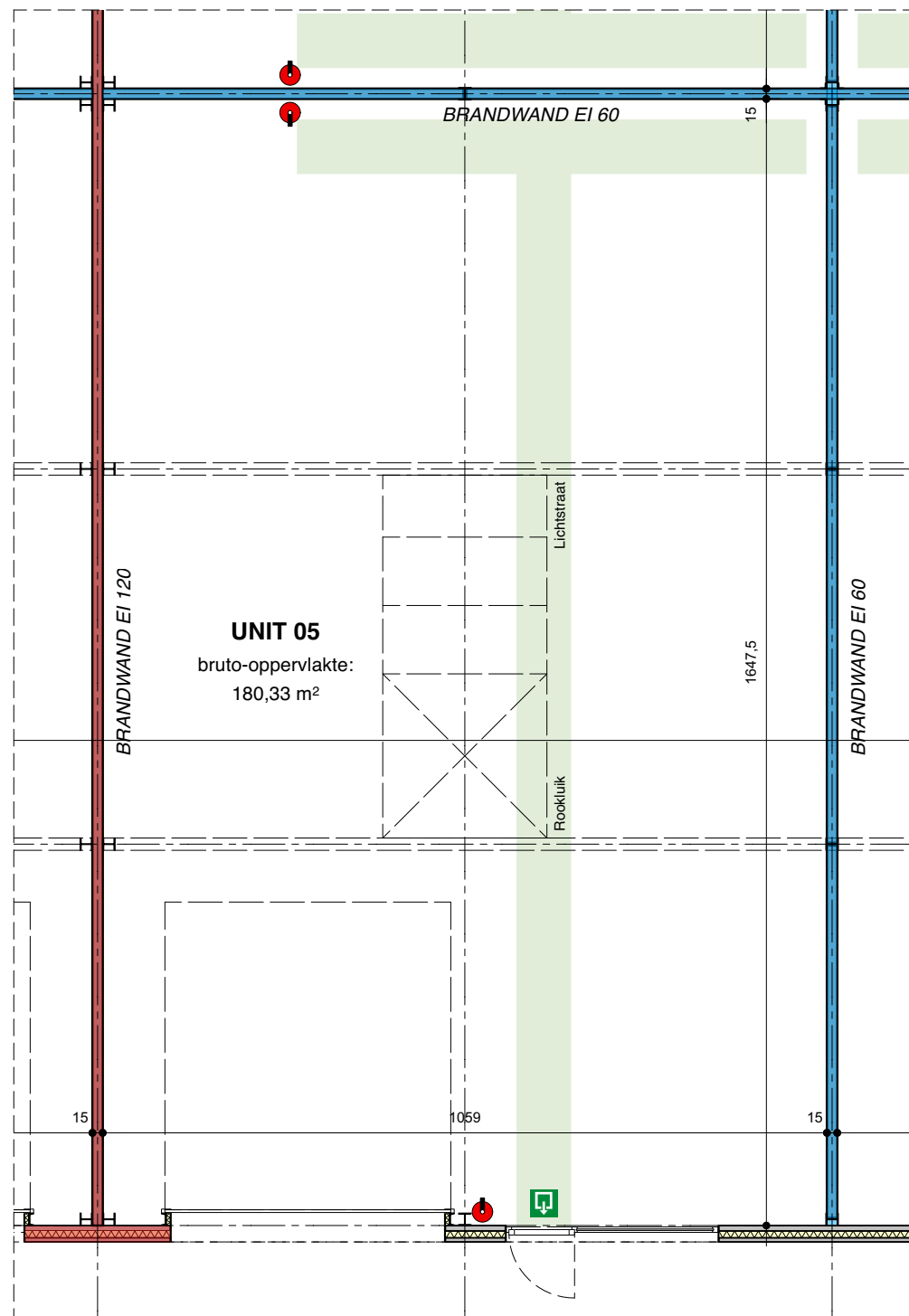
GEVELAANZICHT OOST



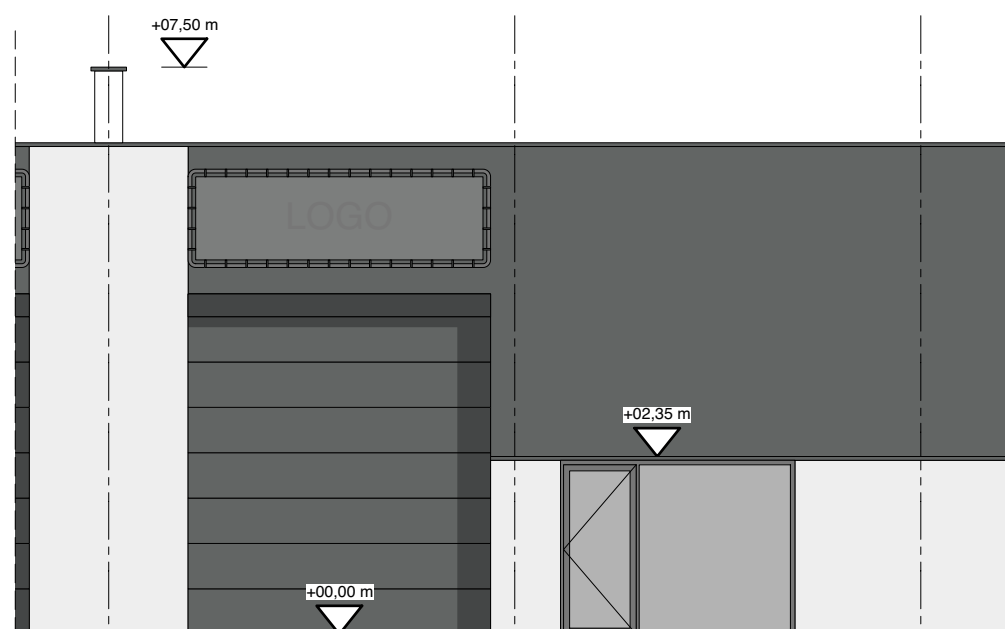
0 1 5 m



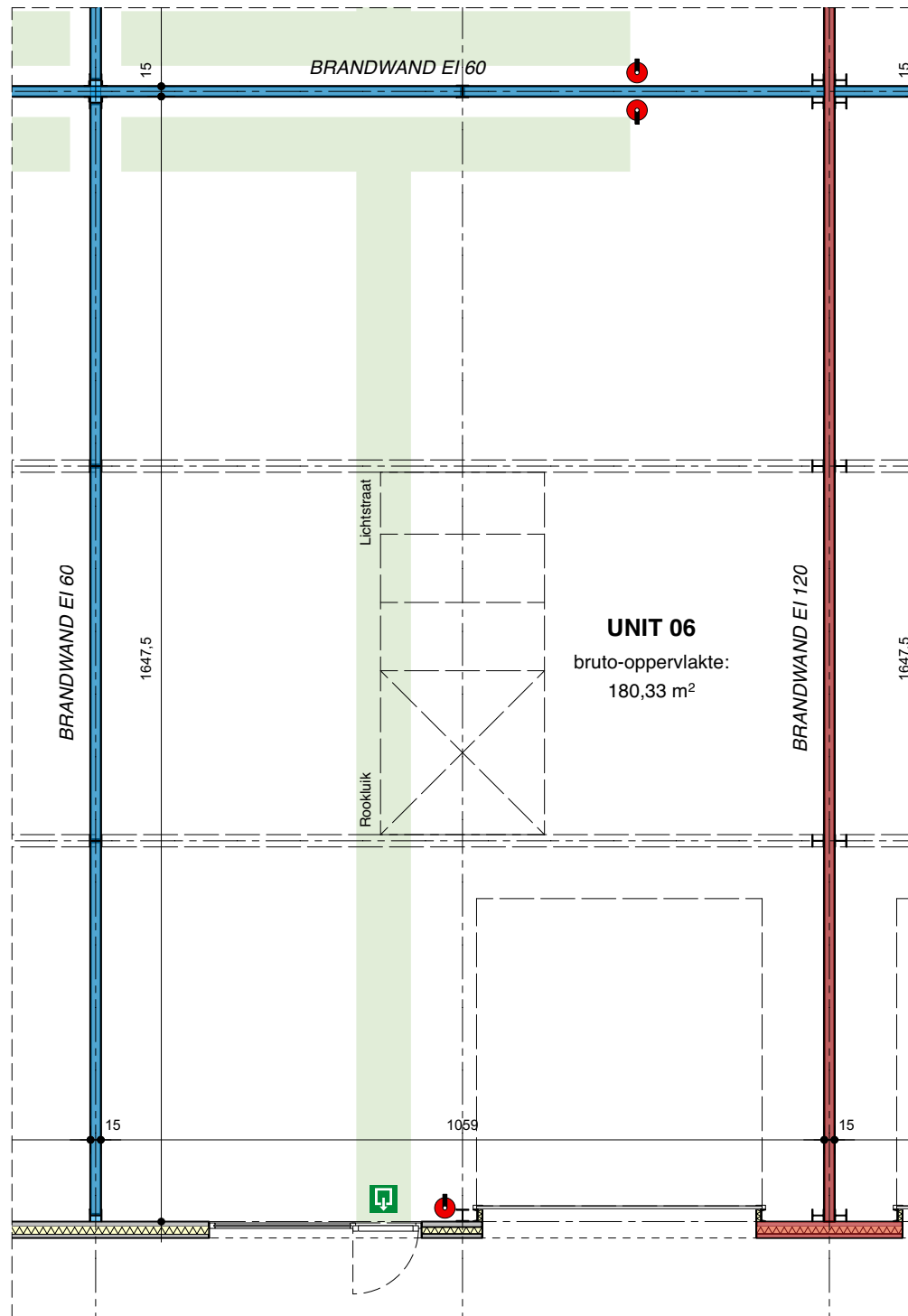
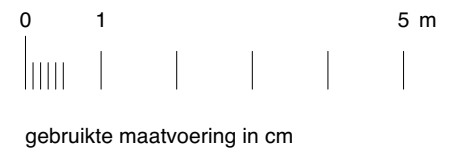
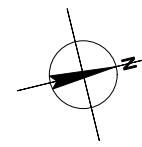
gebruikte maatvoering in cm



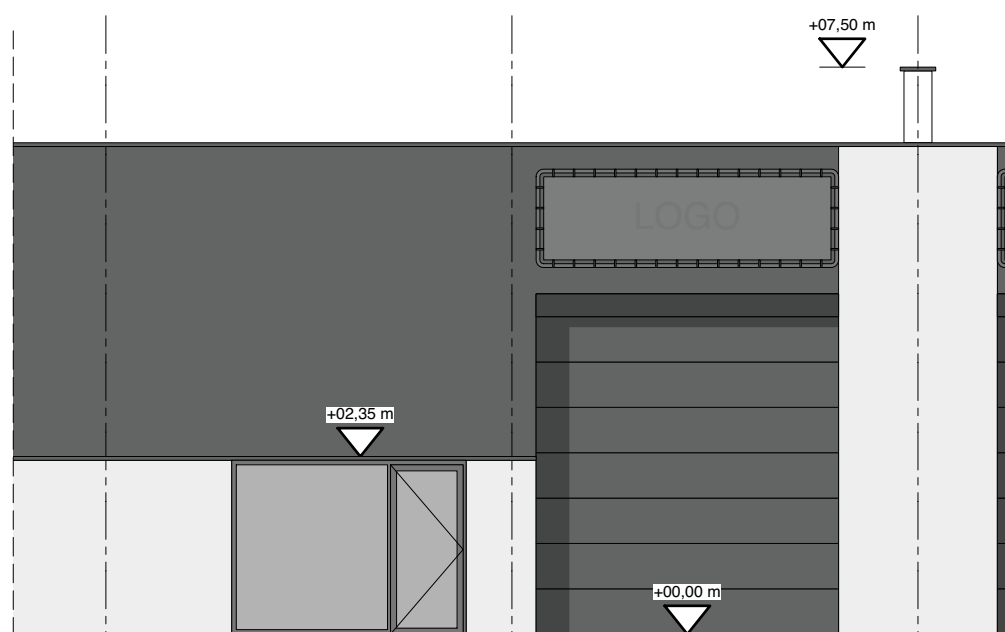
GRONDPLAN



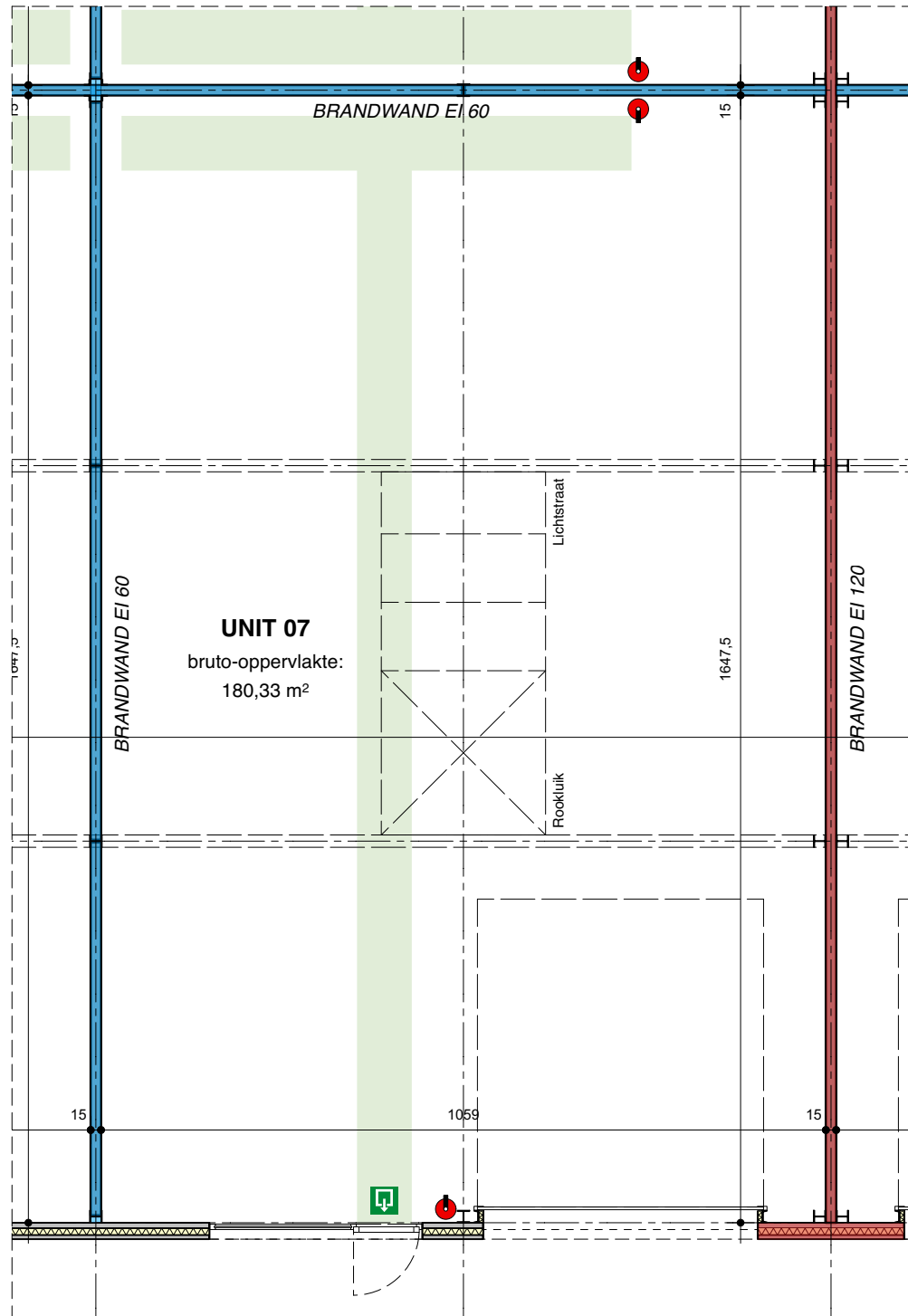
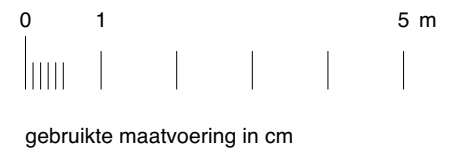
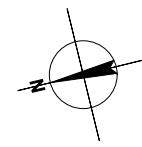
GEVELAANZICHT WEST



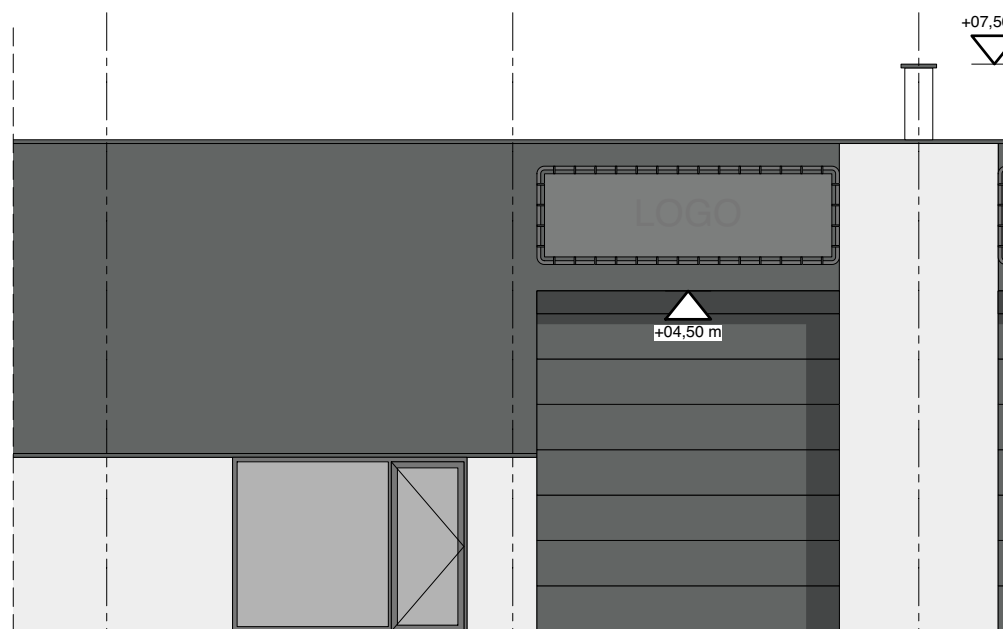
GRONDPLAN



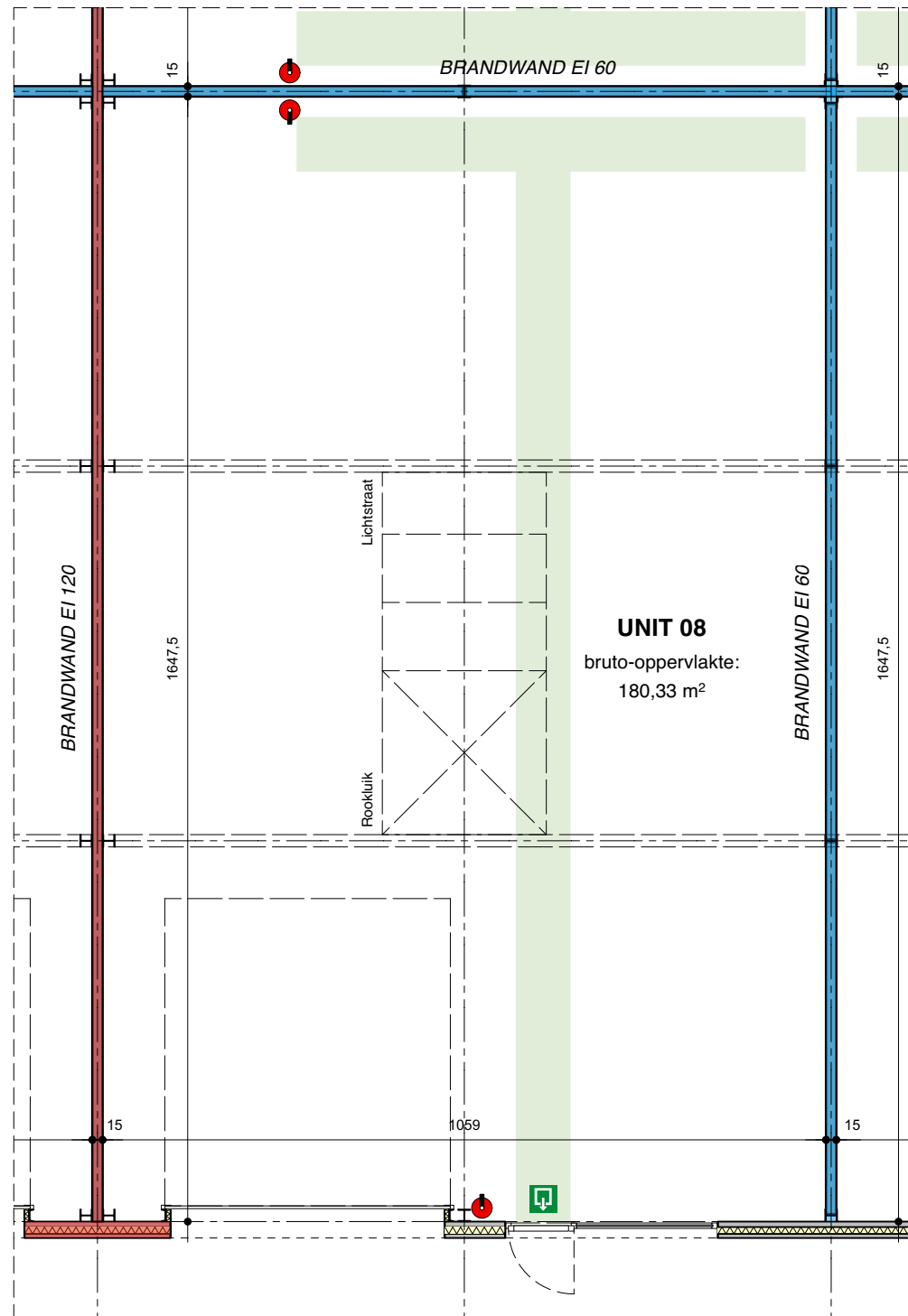
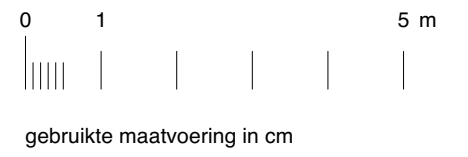
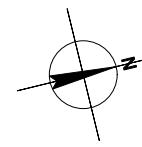
GEVELAANZICHT OOST



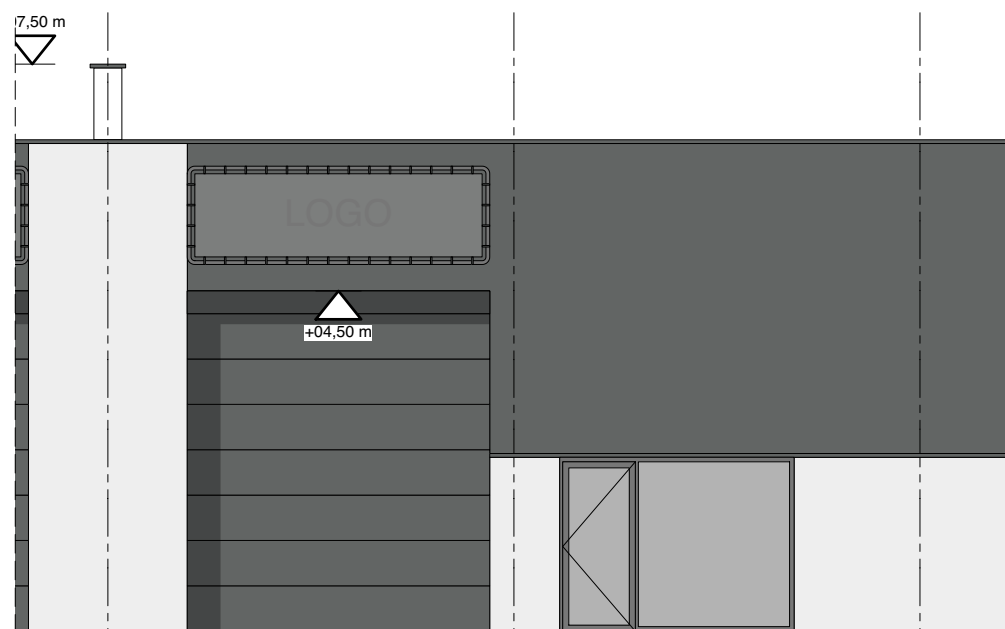
GRONDPLAN



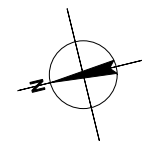
GEVELAANZICHT WEST



GRONDPLAN



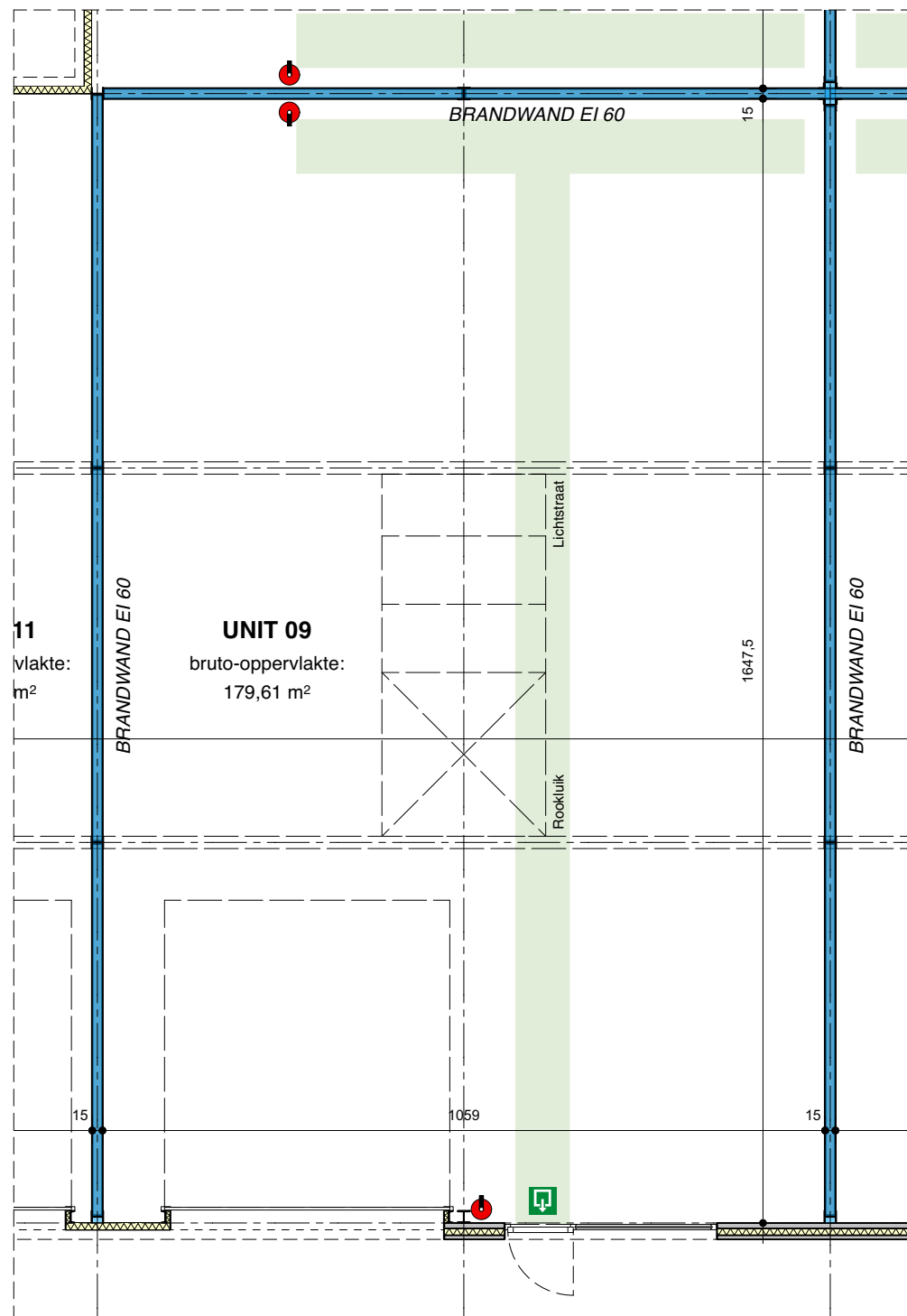
GEVELAANZICHT OOST



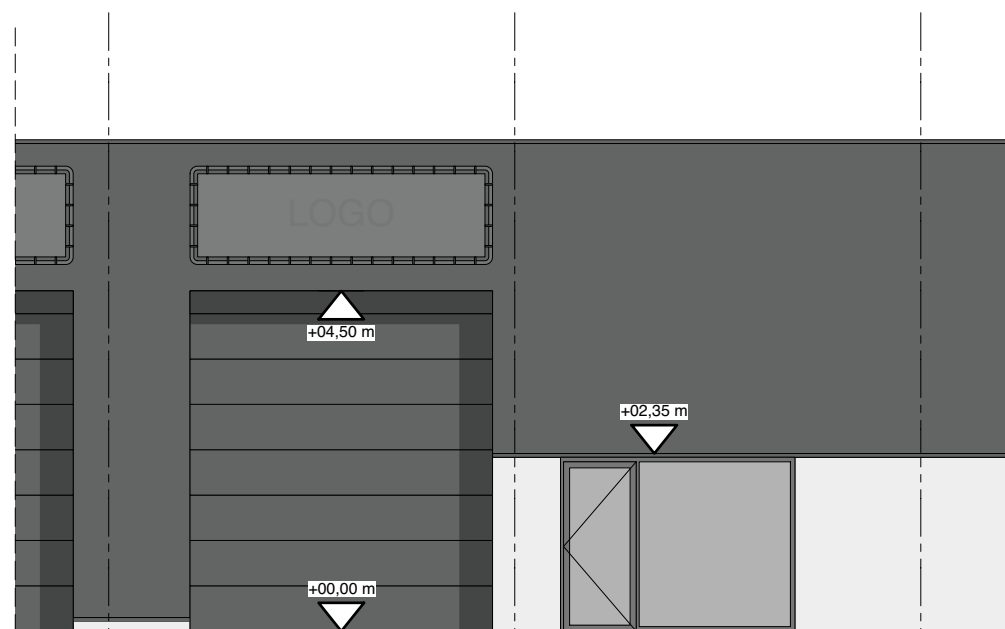
0 1 5 m



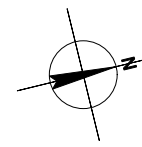
gebruikte maatvoering in cm



GRONDPLAN



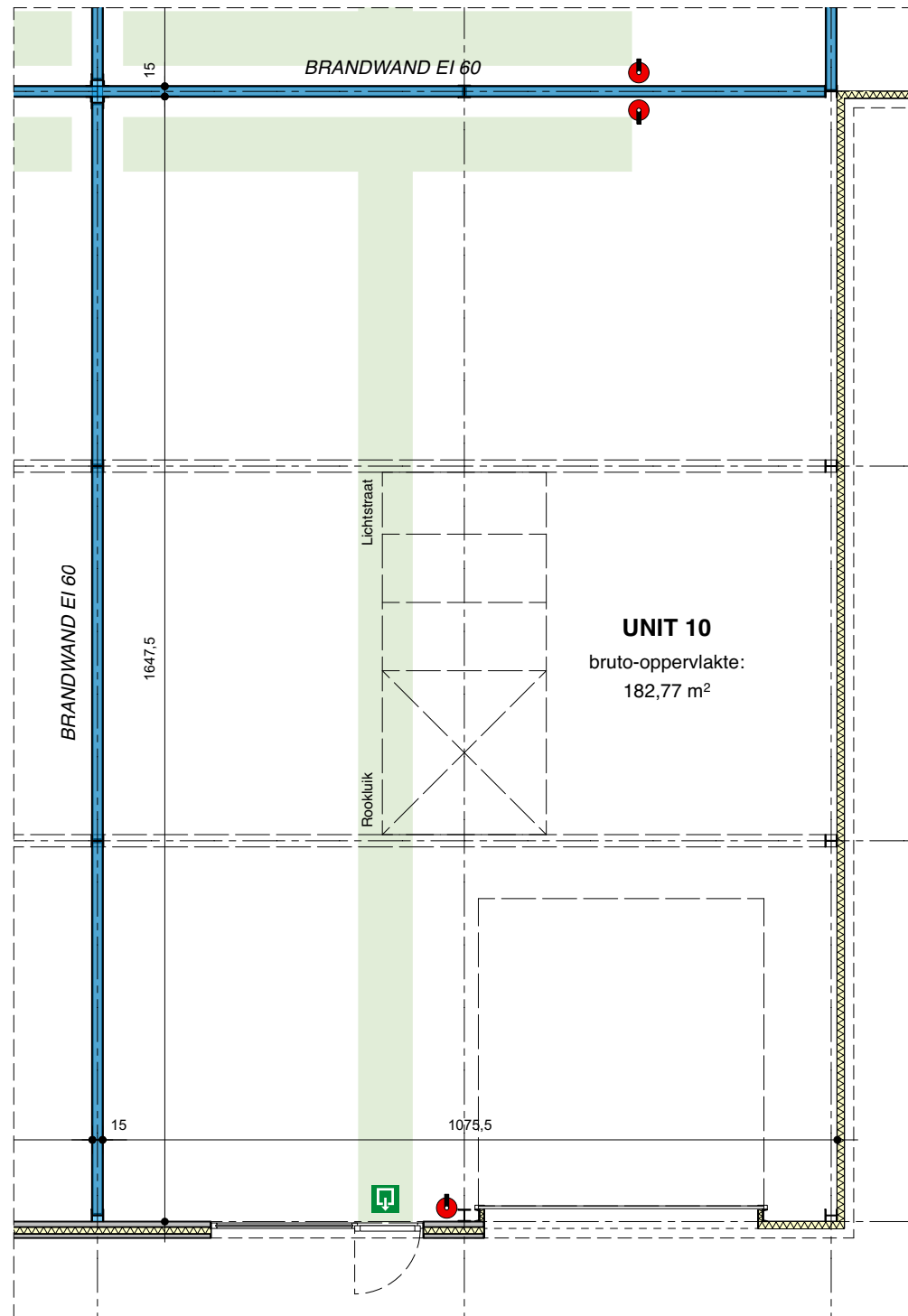
GEVELAANZICHT WEST



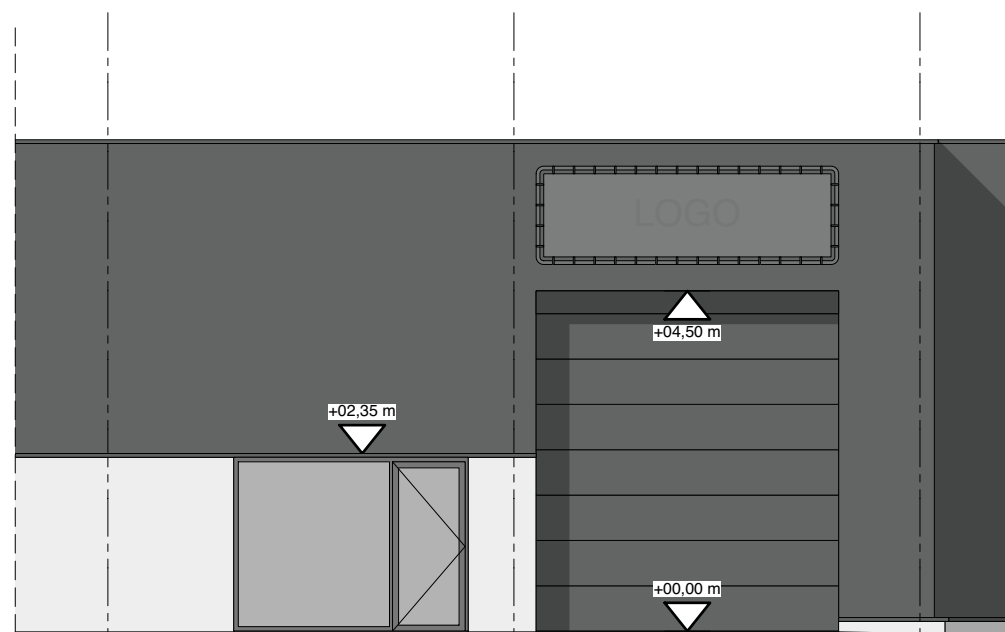
0 1 5 m



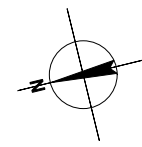
gebruikte maatvoering in cm



GRONDPLAN



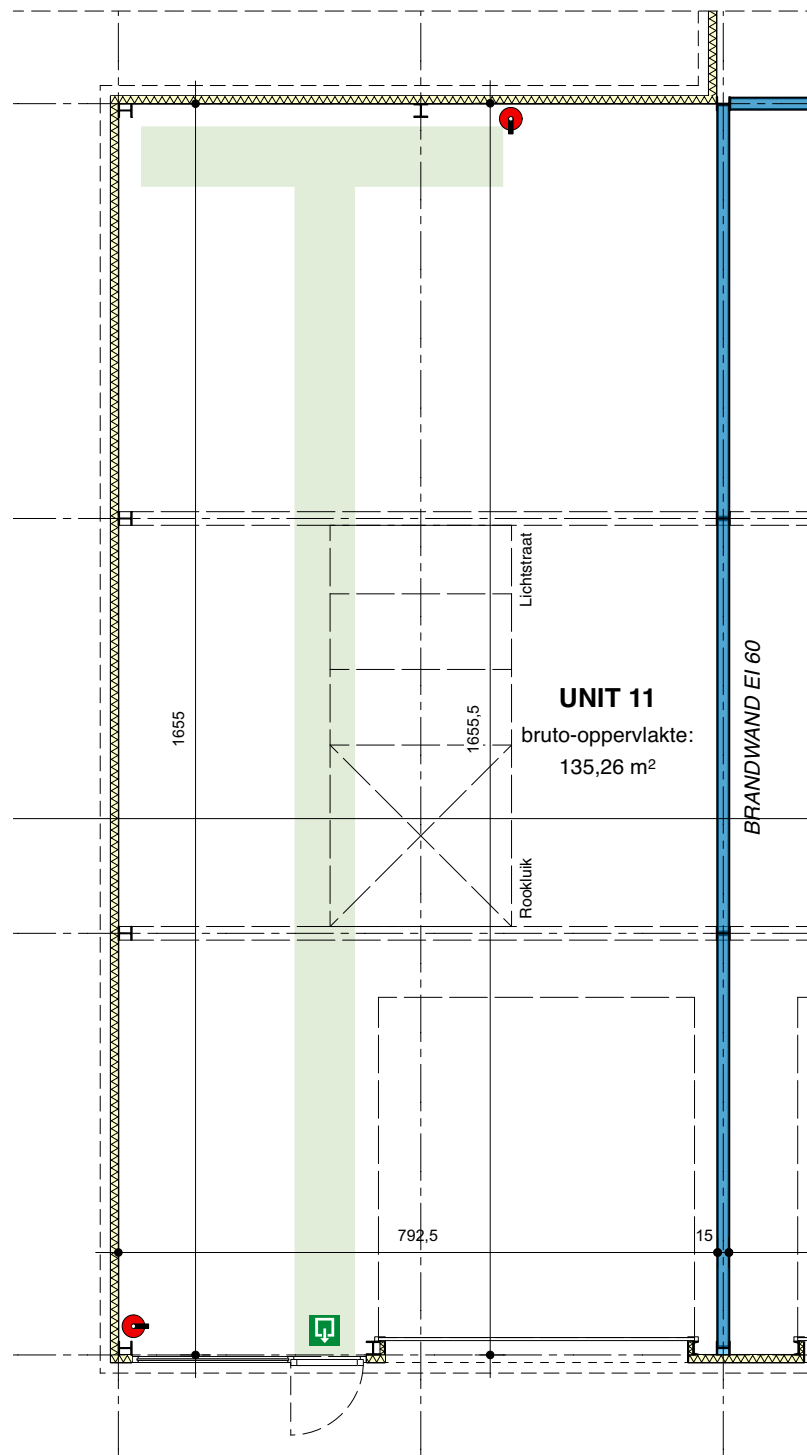
GEVELAANZICHT OOST



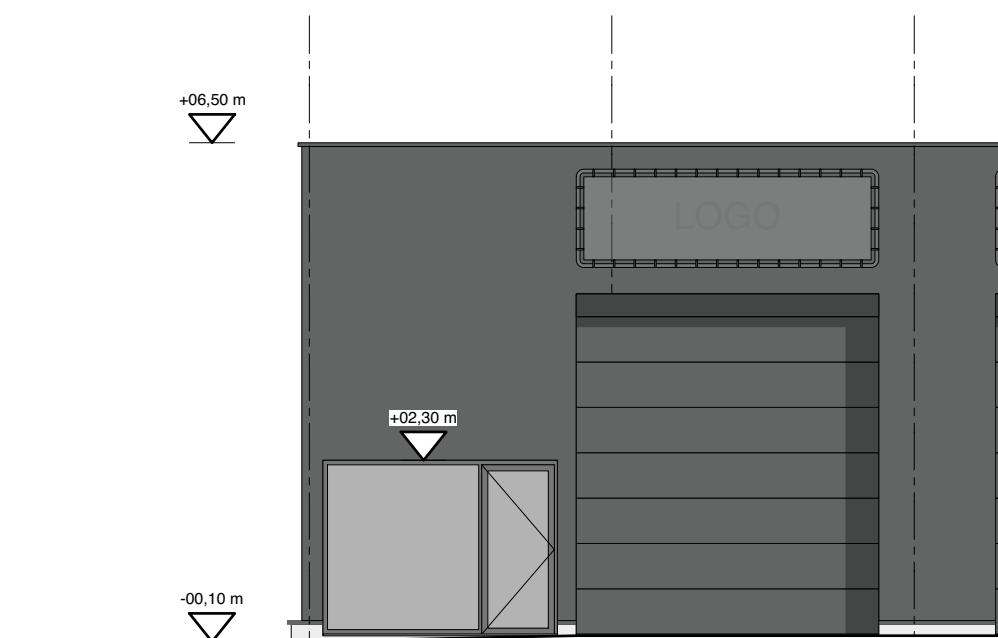
0 1 5 m



gebruikte maatvoering in cm



GRONDPLAN



GEVELAANZICHT WEST



mint architecten

Heerdgang 9 - 0001 B-3920 Lommel
www.mint-architecten.be +32(0)11 54 43 19

Het bouwen van industriële units

Tunnelstraat ZN, B-3970 Leopoldsburg

Unit 11

Nieuwe toestand

Formaat: A3

Schaal: 1:100

Dossier: [RELE]

Datum: 13.09.2022