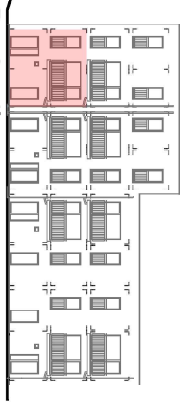
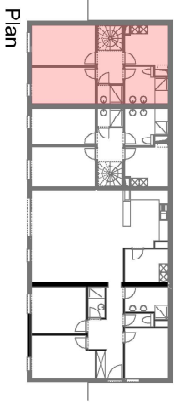


Façade avant



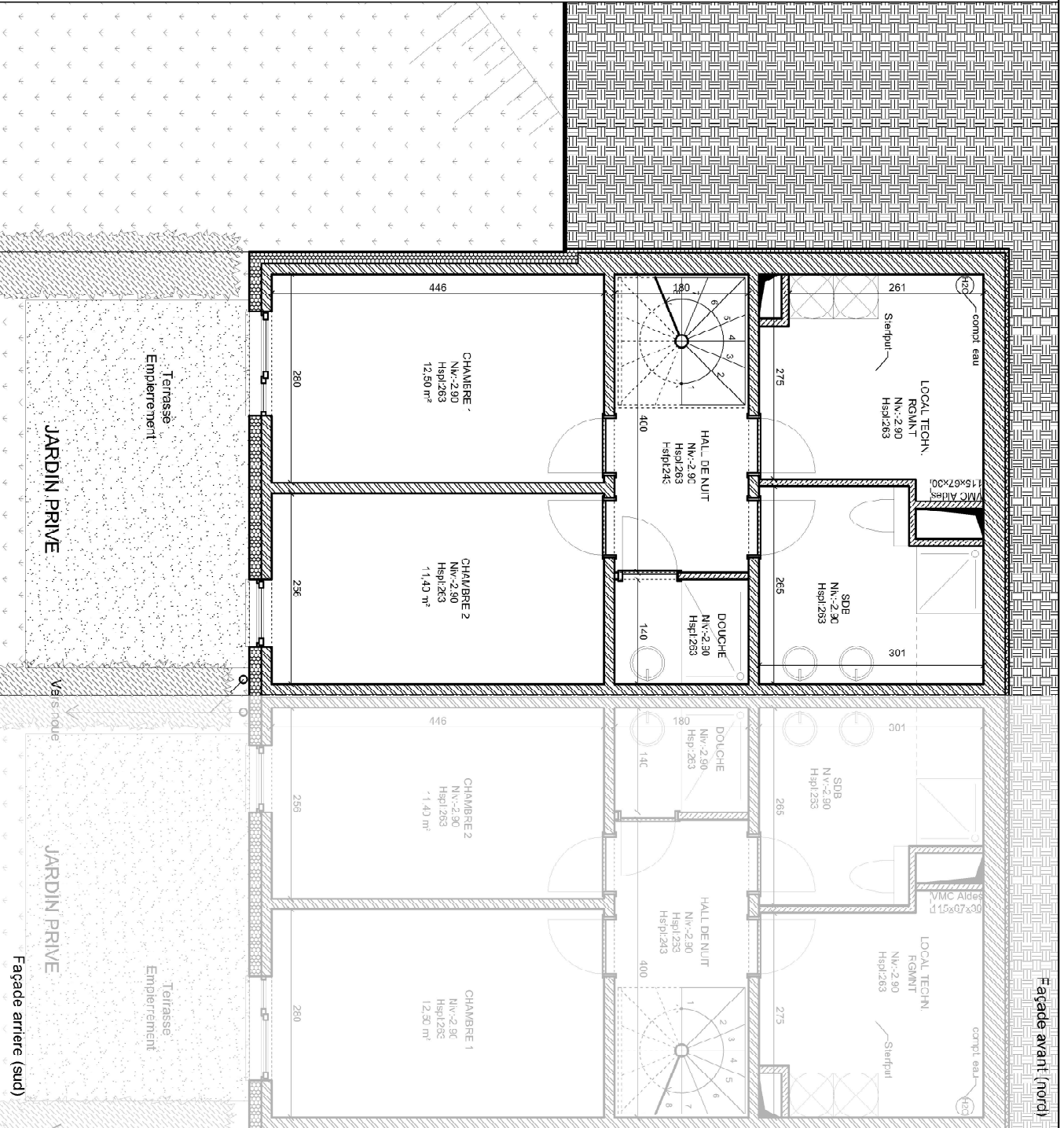
Façade arrière

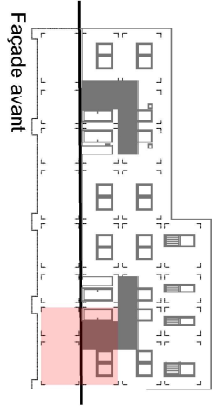


Plan

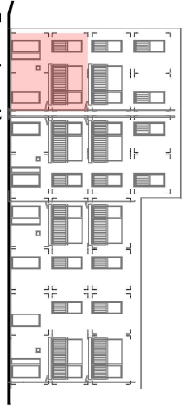
### BLOC 8 - A01 - NIVEAU -1

Surface brute niveau -1 = 61 m<sup>2</sup>  
Surface brute totale = 122 m<sup>2</sup>

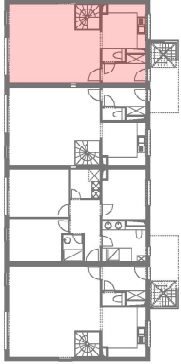




Façade avant



Façade arrière



Plan

### BLOC 8 - A01 - NIVEAU 0

Surface brute niveau +0 = 61m<sup>2</sup>  
Surface brute totale = 122m<sup>2</sup>

