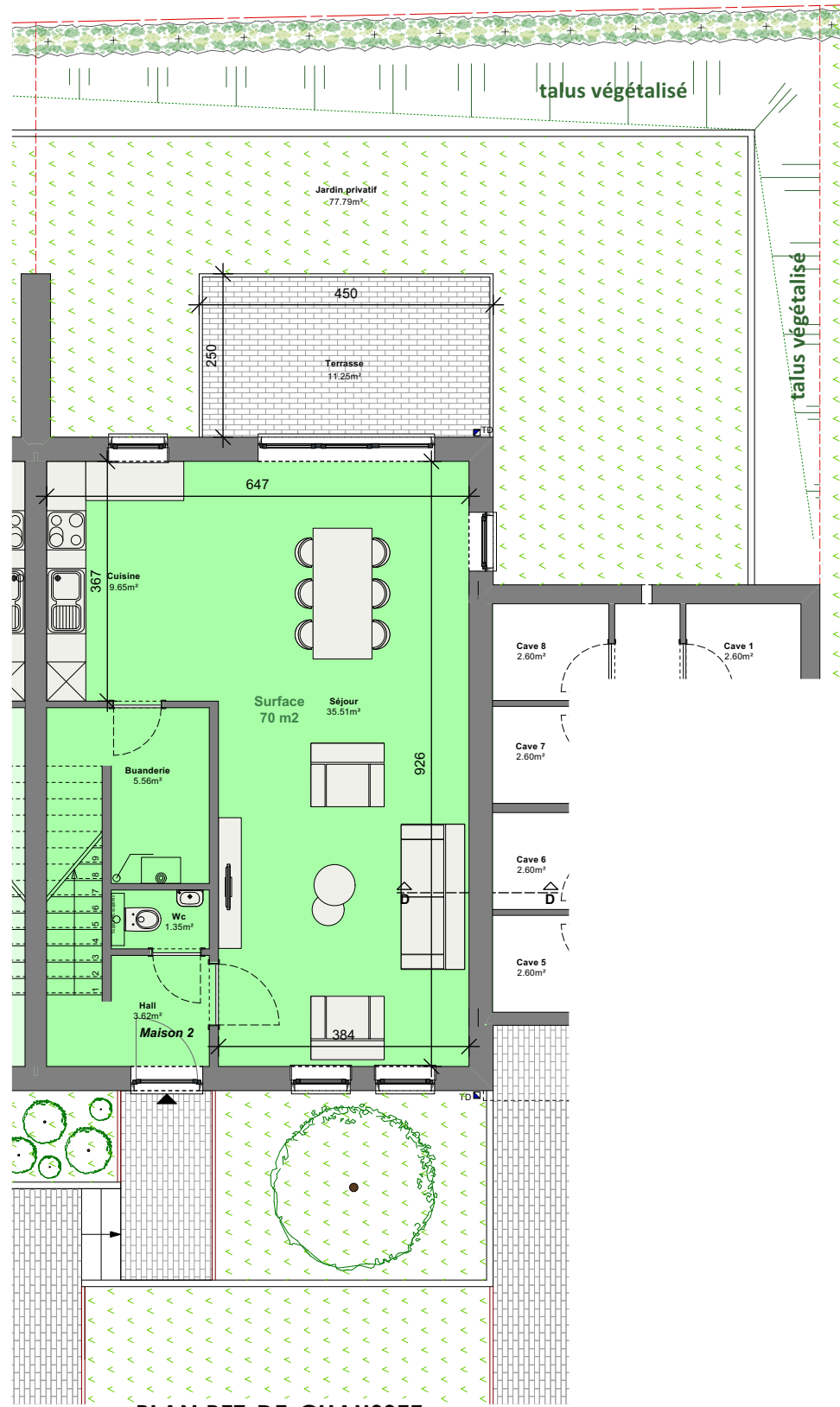
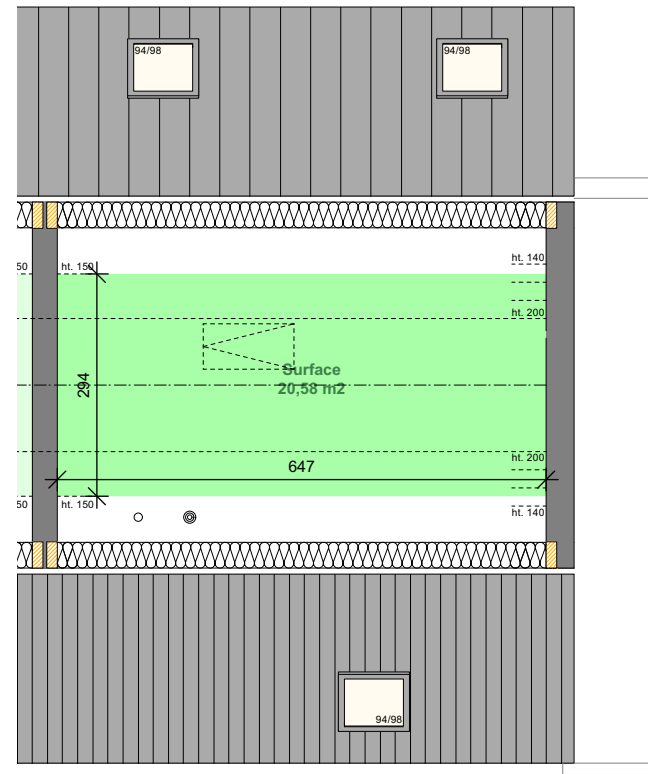


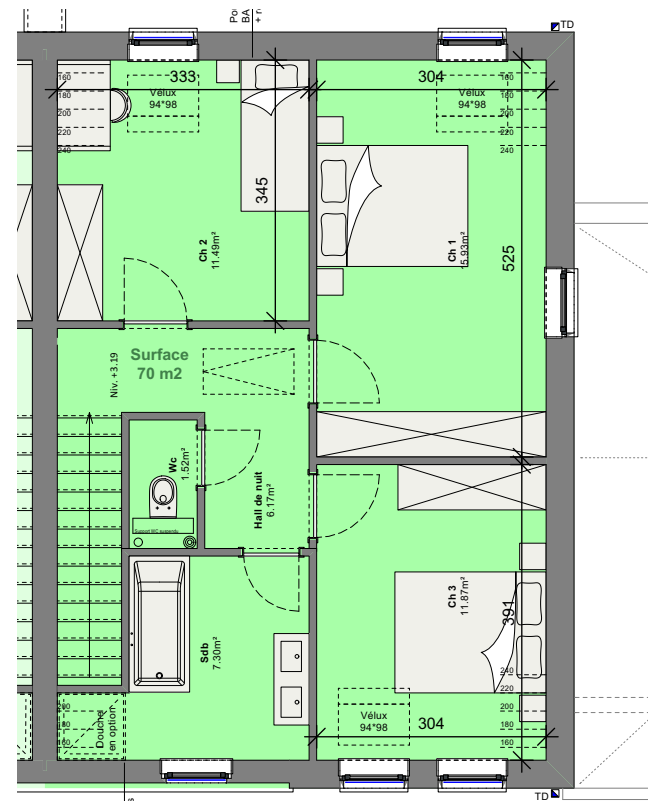
Unité	Nbre Ch.	Surface (m <sup>2</sup> )	Combles (m <sup>2</sup> )	Terrasse (m <sup>2</sup> )	Jardin (m <sup>2</sup> )
M02	3 Ch.	140.00m <sup>2</sup>	20.58m <sup>2</sup>	11.25m <sup>2</sup>	77.79m <sup>2</sup>



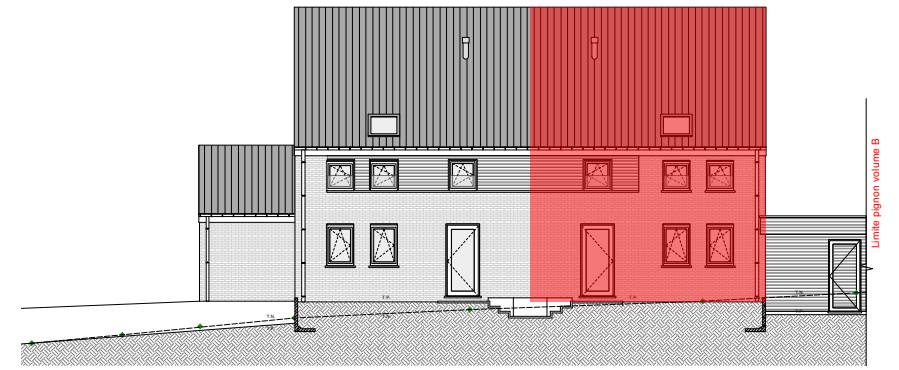
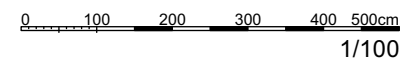
PLAN REZ-DE-CHAUSSEE



PLAN DES COMBLES



PLAN PREMIER ETAGE



Sade COM	<b>MAITRE DE L'OUVRAGE :</b> ARTENUM sprl 145, avenue du chêne - 4802 Heusy
Transmis	
FEUILLE	<b>PLANS REZ - PREMIER - COMBLES</b>



**Synergy Architecture**  
Studio  
Olivier Simon  
architecte

Marche-en-Famenne • web : [www.synergy-architecture.be](http://www.synergy-architecture.be) • tel. : 0479 / 85.03.12

**CONSTRUCTION DE 8 LOGEMENTS**  
**Chaussée de Wavre n° 35b à 4217 Héron**

**Résidence "Clos Saint-Martin" - Maison 2**

INDICE	ECHELLE
B	1/100
PLAN N° ART-COM-M02-100/110/120	