

S28944

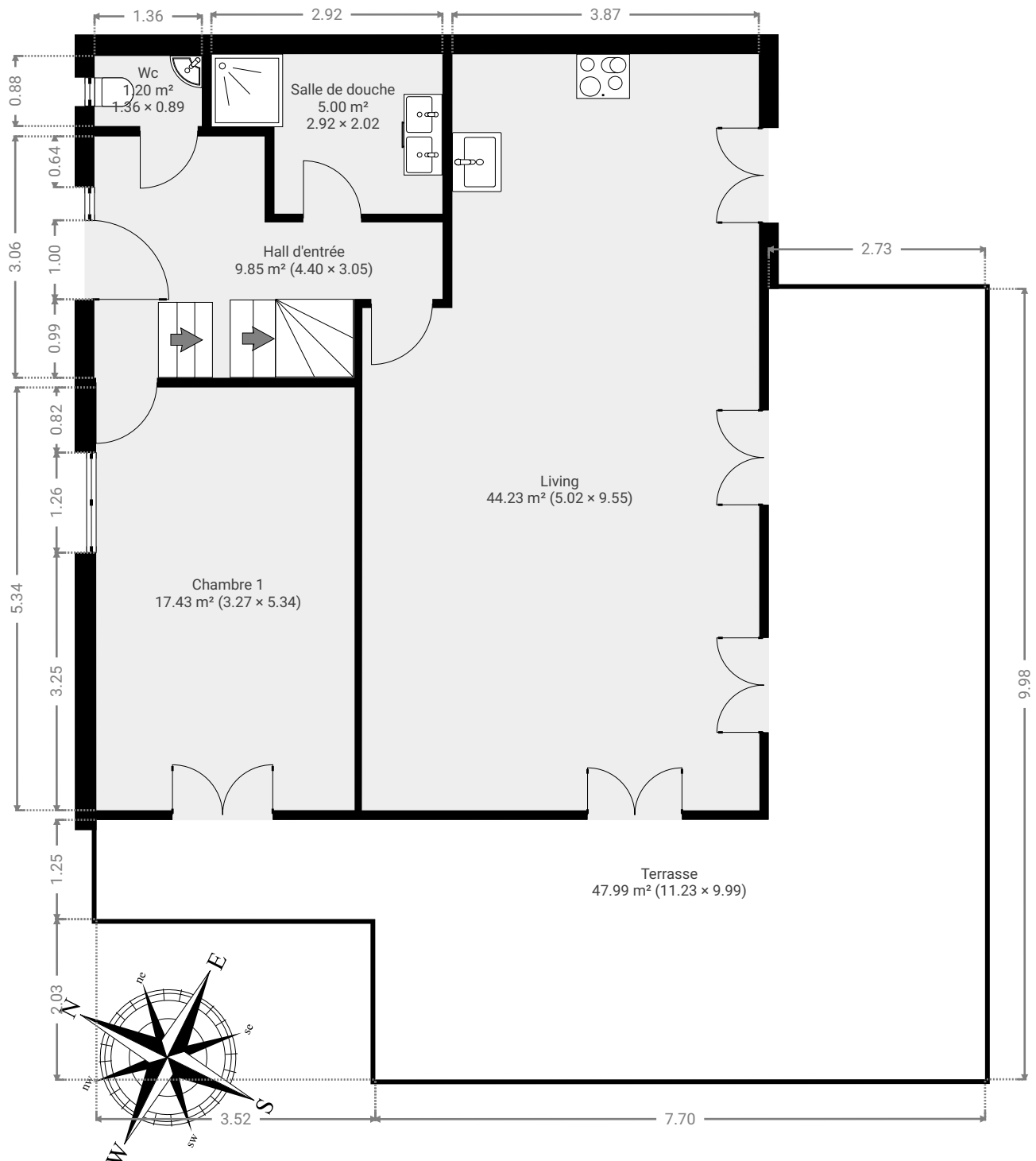
ENVOYÉ PAR

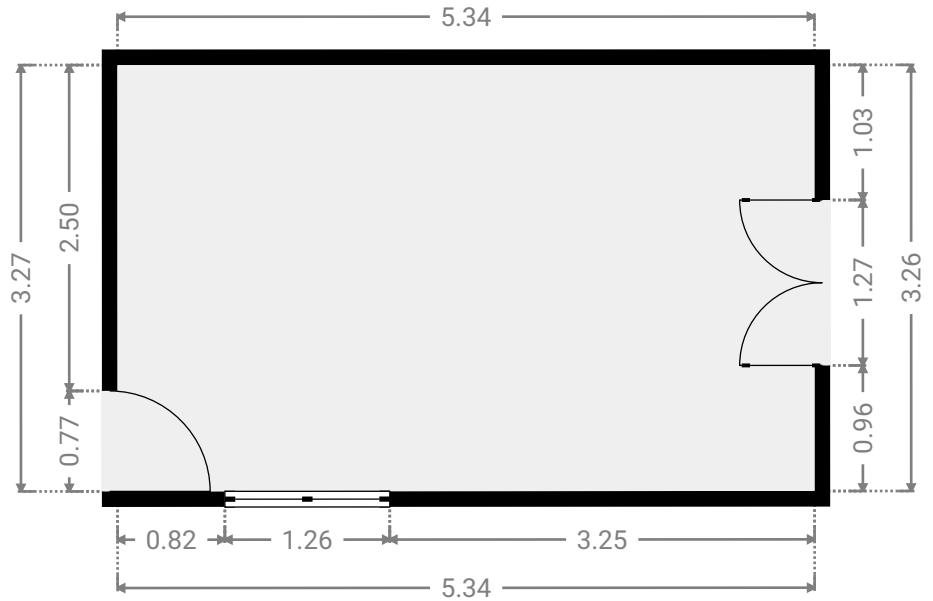
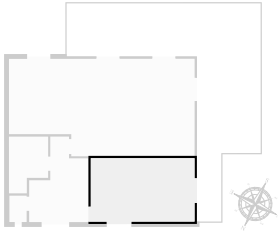
Opérateur 5 Servisco
opérateur5@servisco.be

CRÉÉ LE

2026-01-16

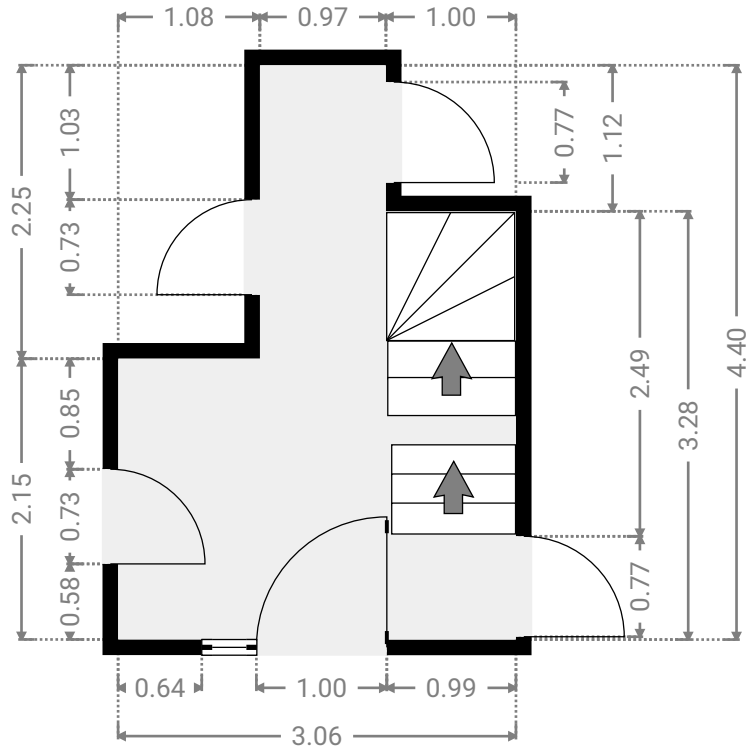
Surface totale 289.06 m²	Étages 3	Pièces 18	Salle de bains 1
------------------------------------	--------------------	---------------------	----------------------------

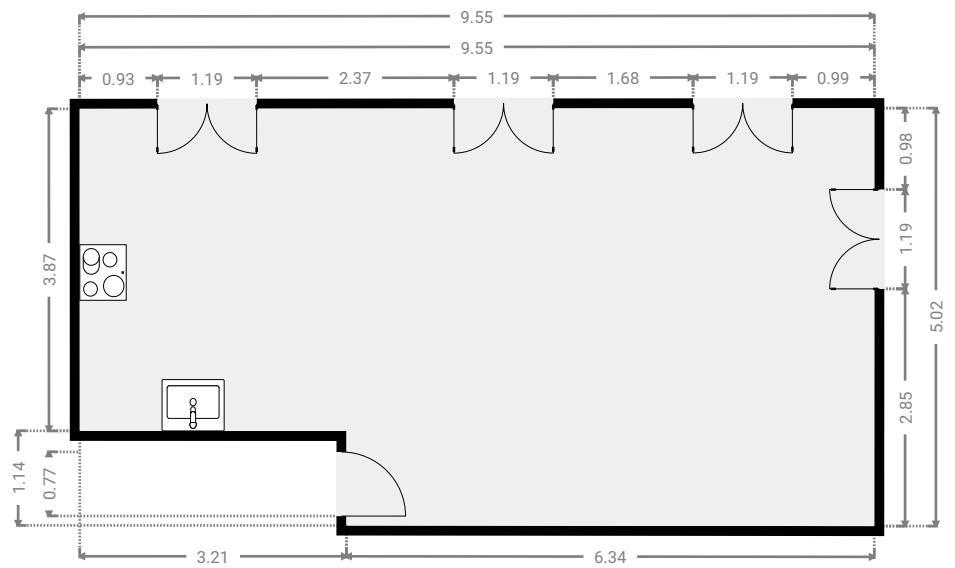
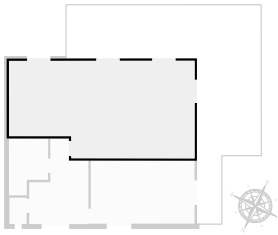




▼ **Hall d'entrée**
Rez-de-chaussée

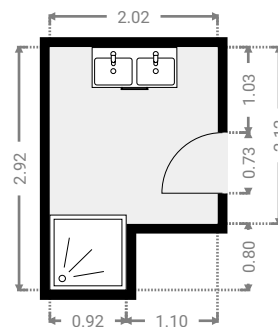
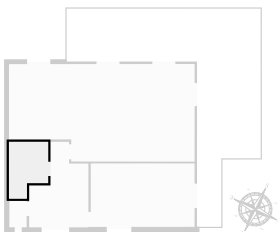
LARGEUR : 3.05 m • LONGUEUR : 4.40 m
SURFACE : 9.85 m² • PÉRIMÈTRE : 14.89 m

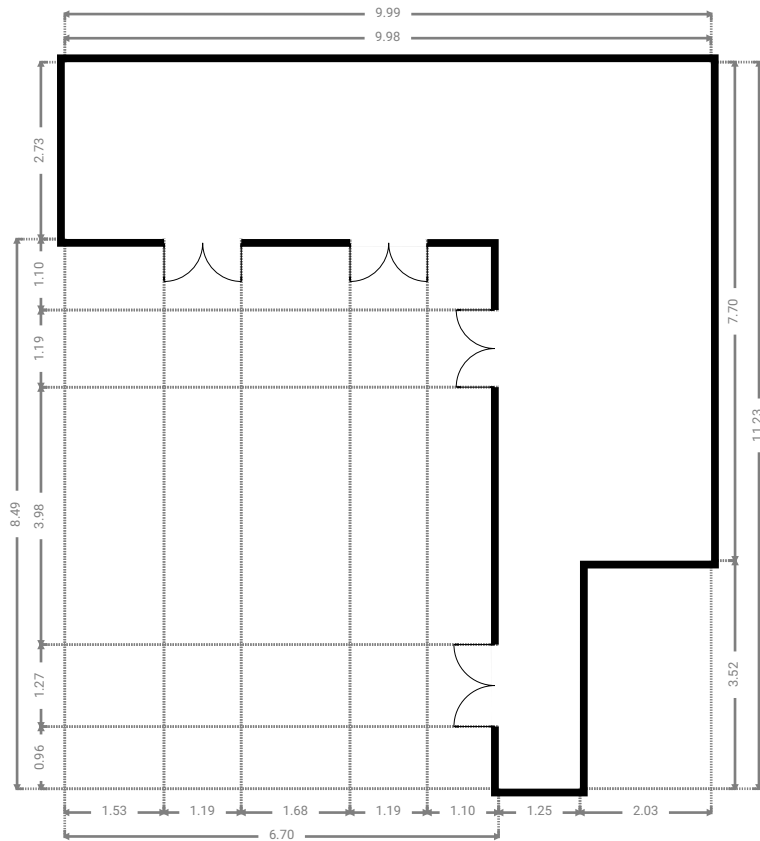
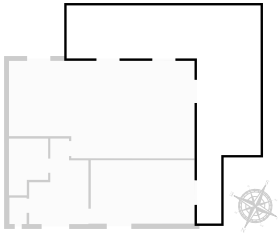




▼ Salle de douche
Rez-de-chaussée

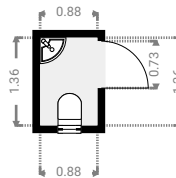
LARGEUR : 2.02 m • LONGUEUR : 2.92 m
SURFACE : 5.00 m² • PÉRIMÈTRE : 9.86 m

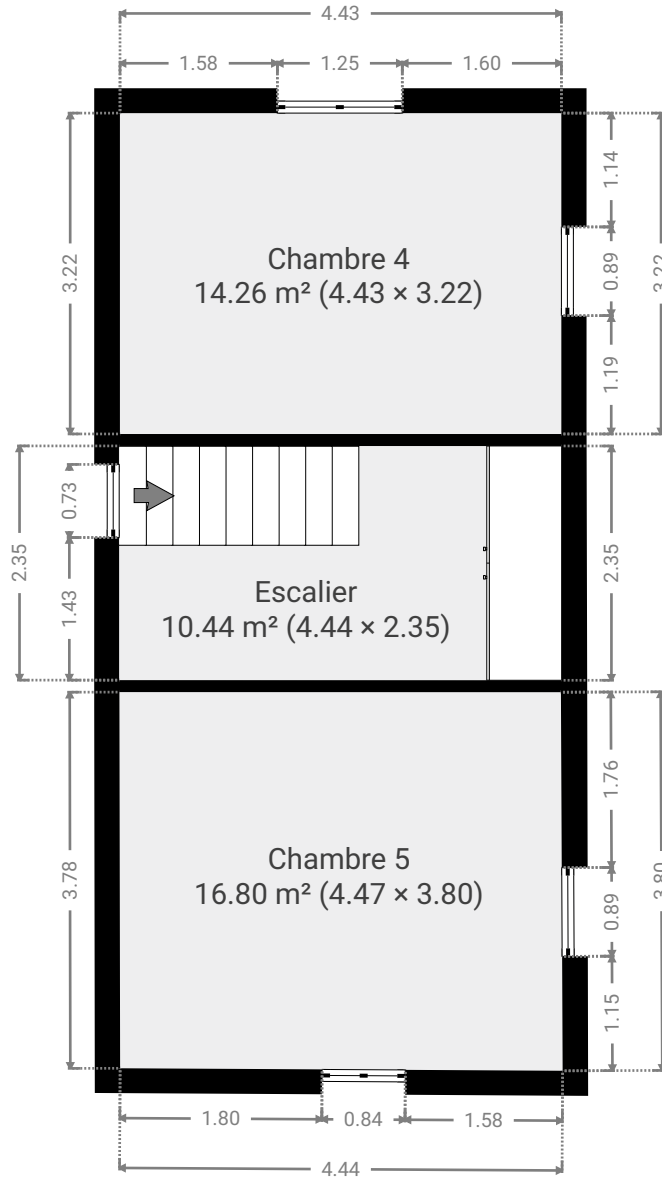


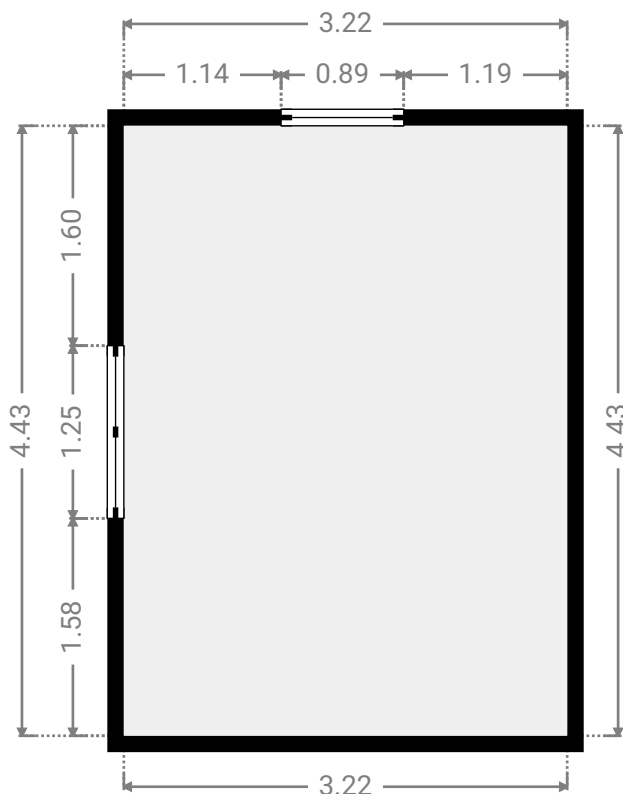
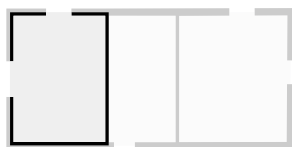


▼ Wc
Rez-de-chaussée

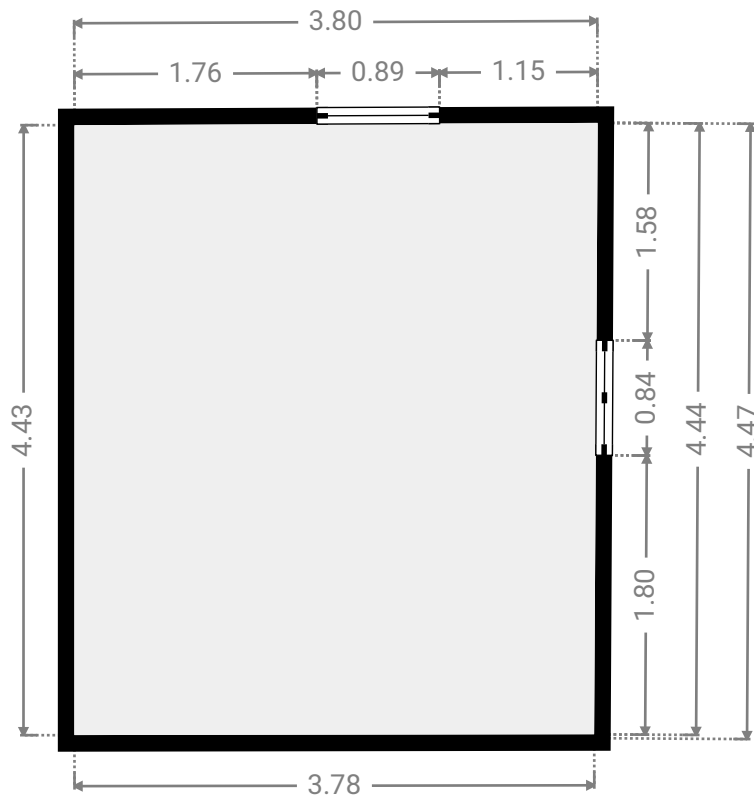
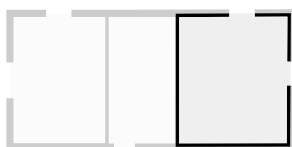
LARGEUR : 0.89 m • LONGUEUR : 1.36 m
SURFACE : 1.20 m² • PÉRIMÈTRE : 4.48 m

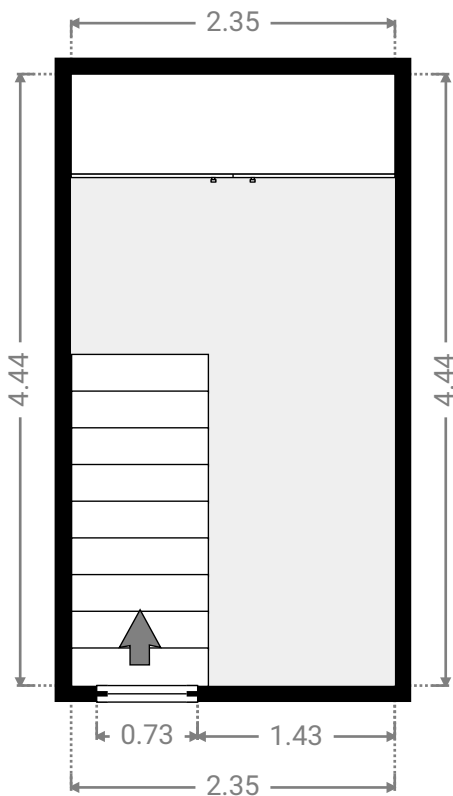
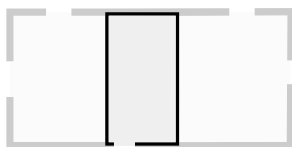


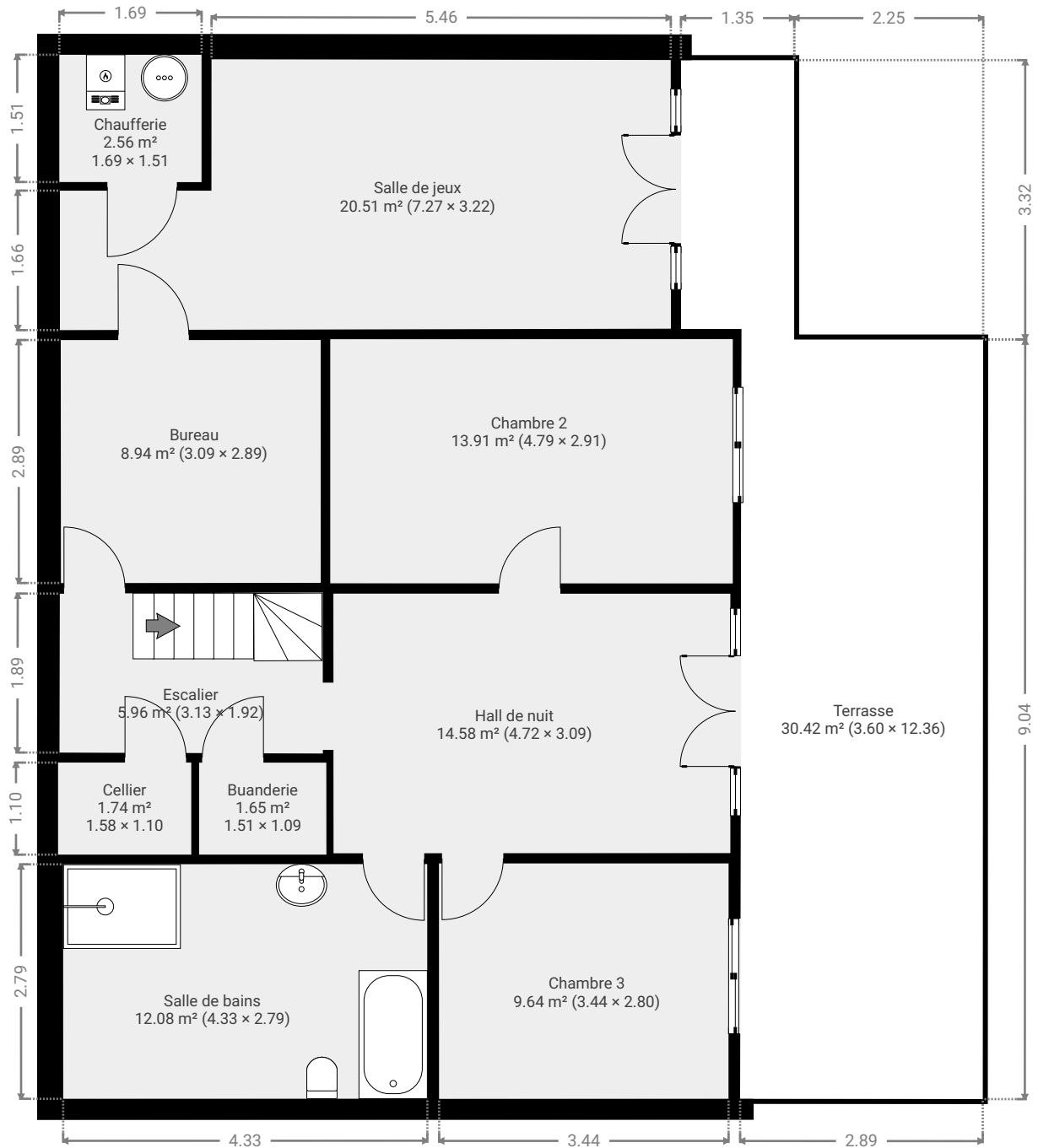


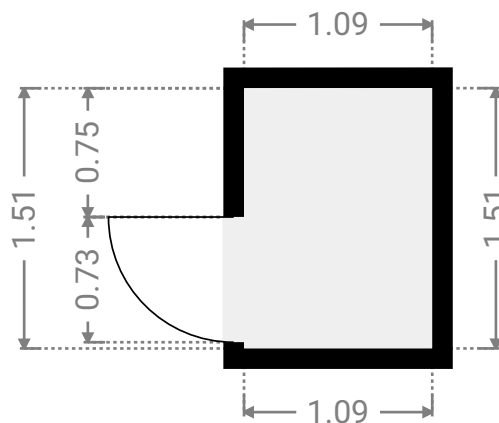
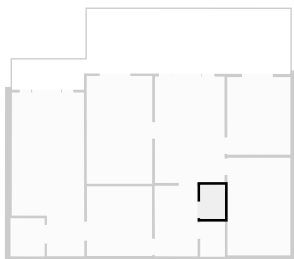


LARGEUR : 3.80 m • LONGUEUR : 4.47 m
SURFACE : 16.80 m² • PÉRIMÈTRE : 16.45 m



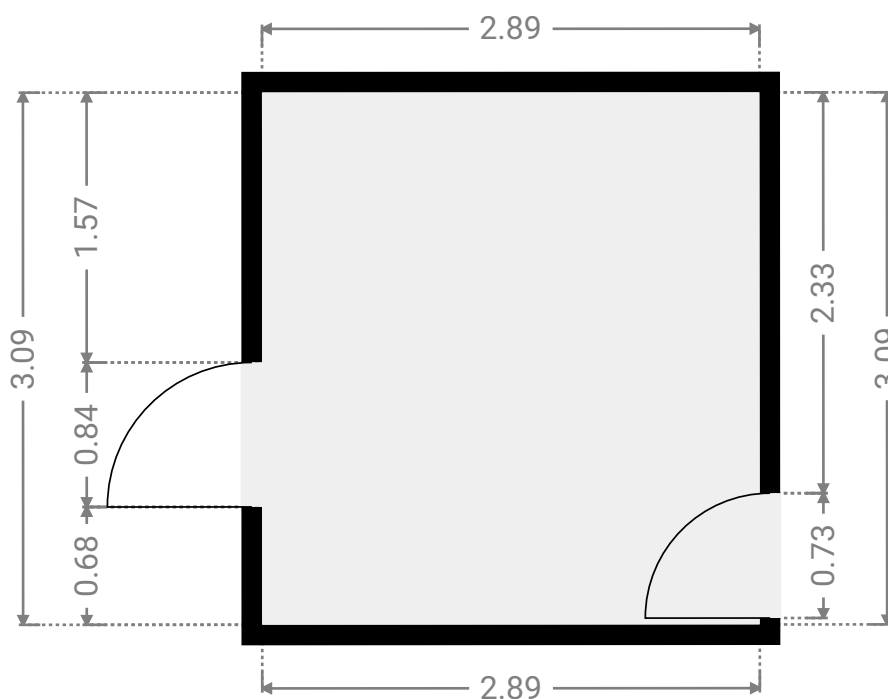
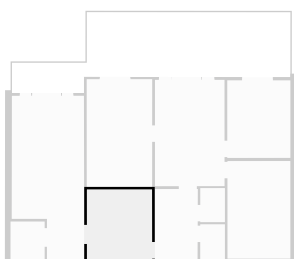


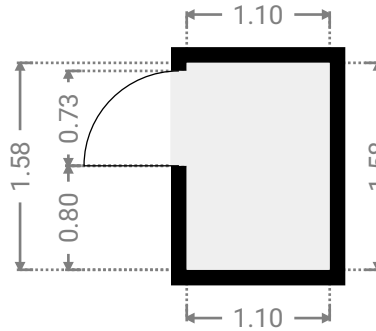
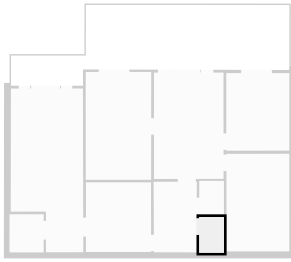




▼ **Bureau**
Sous-sol

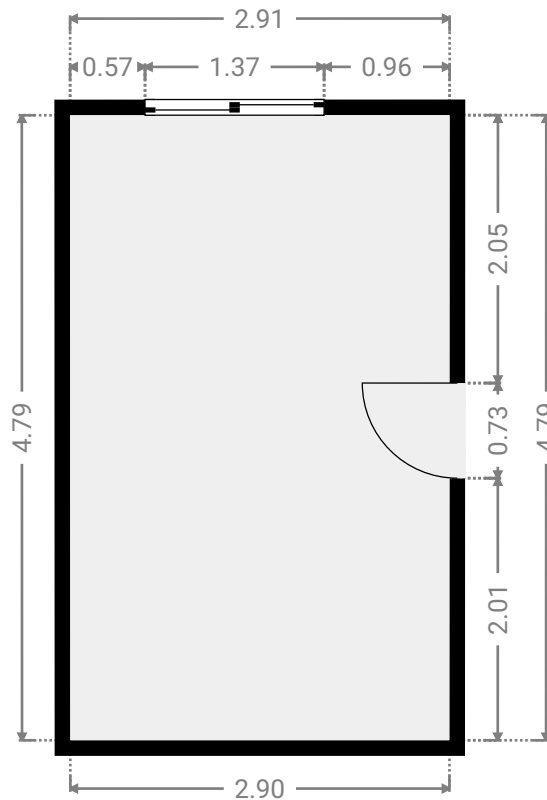
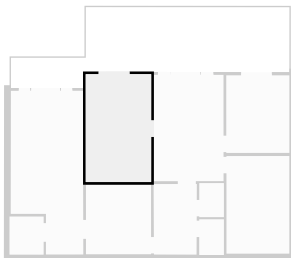
LARGEUR : 2.89 m • LONGUEUR : 3.09 m
SURFACE : 8.94 m² • PÉRIMÈTRE : 11.96 m

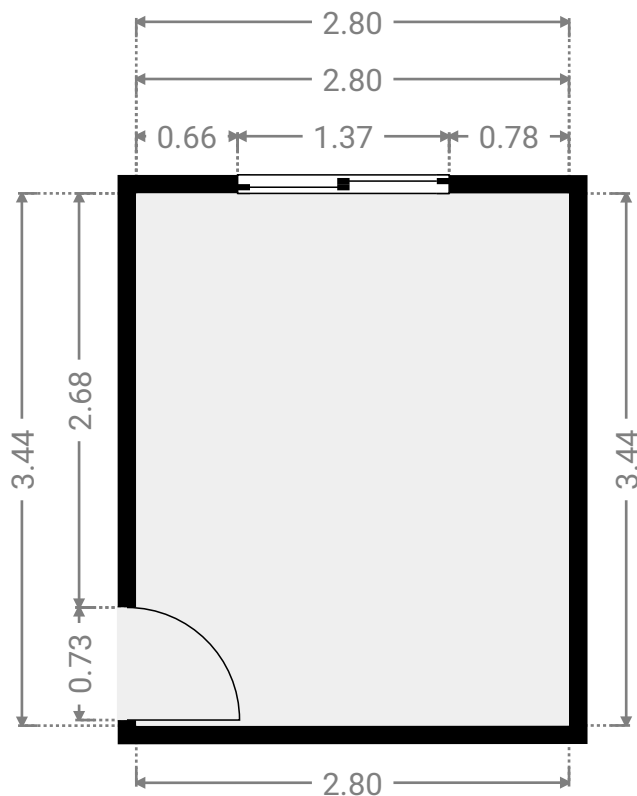
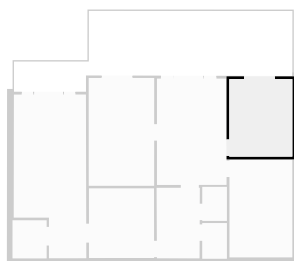




▼ Chambre 2
Sous-sol

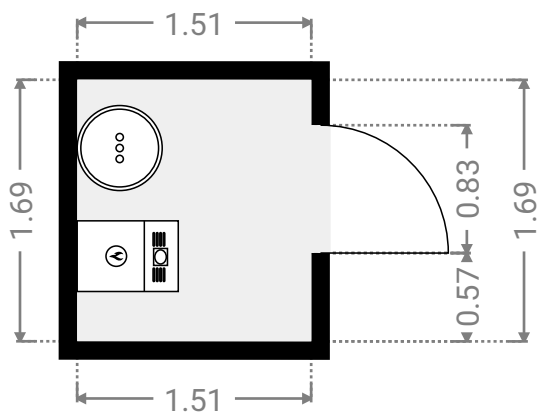
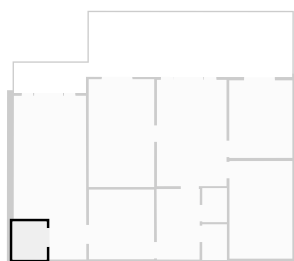
LARGEUR : 2.91 m • LONGUEUR : 4.79 m
SURFACE : 13.91 m² • PÉRIMÈTRE : 15.39 m

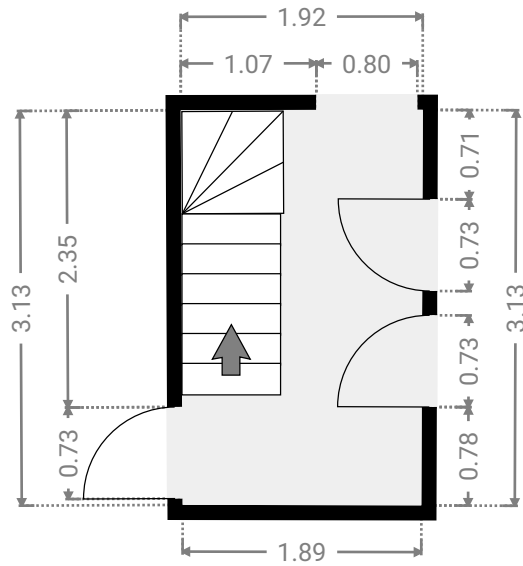




▼ **Chaudière**
Sous-sol

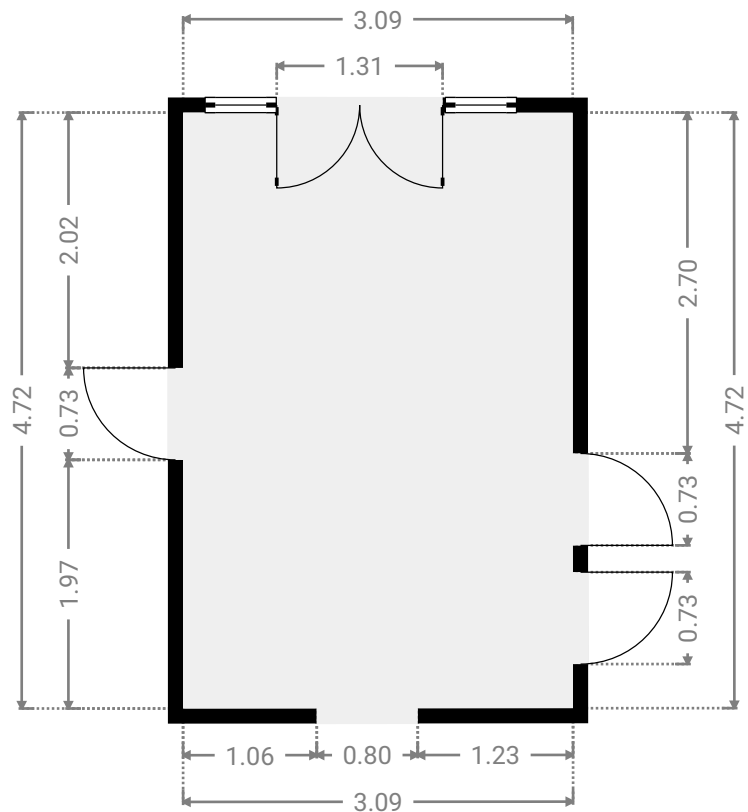
LARGEUR : 1.51 m • LONGUEUR : 1.69 m
SURFACE : 2.56 m² • PÉRIMÈTRE : 6.41 m



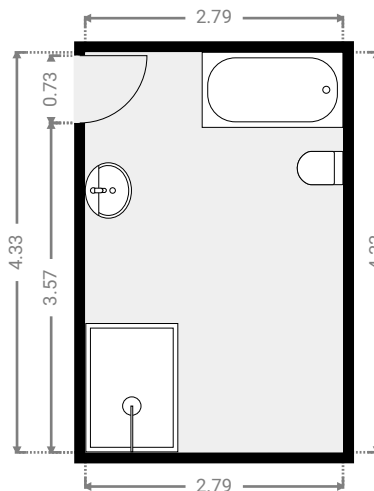
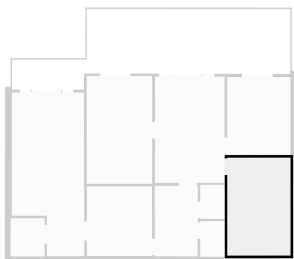


▼ Hall de nuit
Sous-sol

LARGEUR : 3.09 m • LONGUEUR : 4.72 m
SURFACE : 14.58 m² • PÉRIMÈTRE : 15.62 m



▼ **Salle de bains**
Sous-sol



▼ **Salle de jeux**
Sous-sol

LARGEUR : 3.22 m • LONGUEUR : 7.27 m
SURFACE : 20.51 m² • PÉRIMÈTRE : 20.95 m

