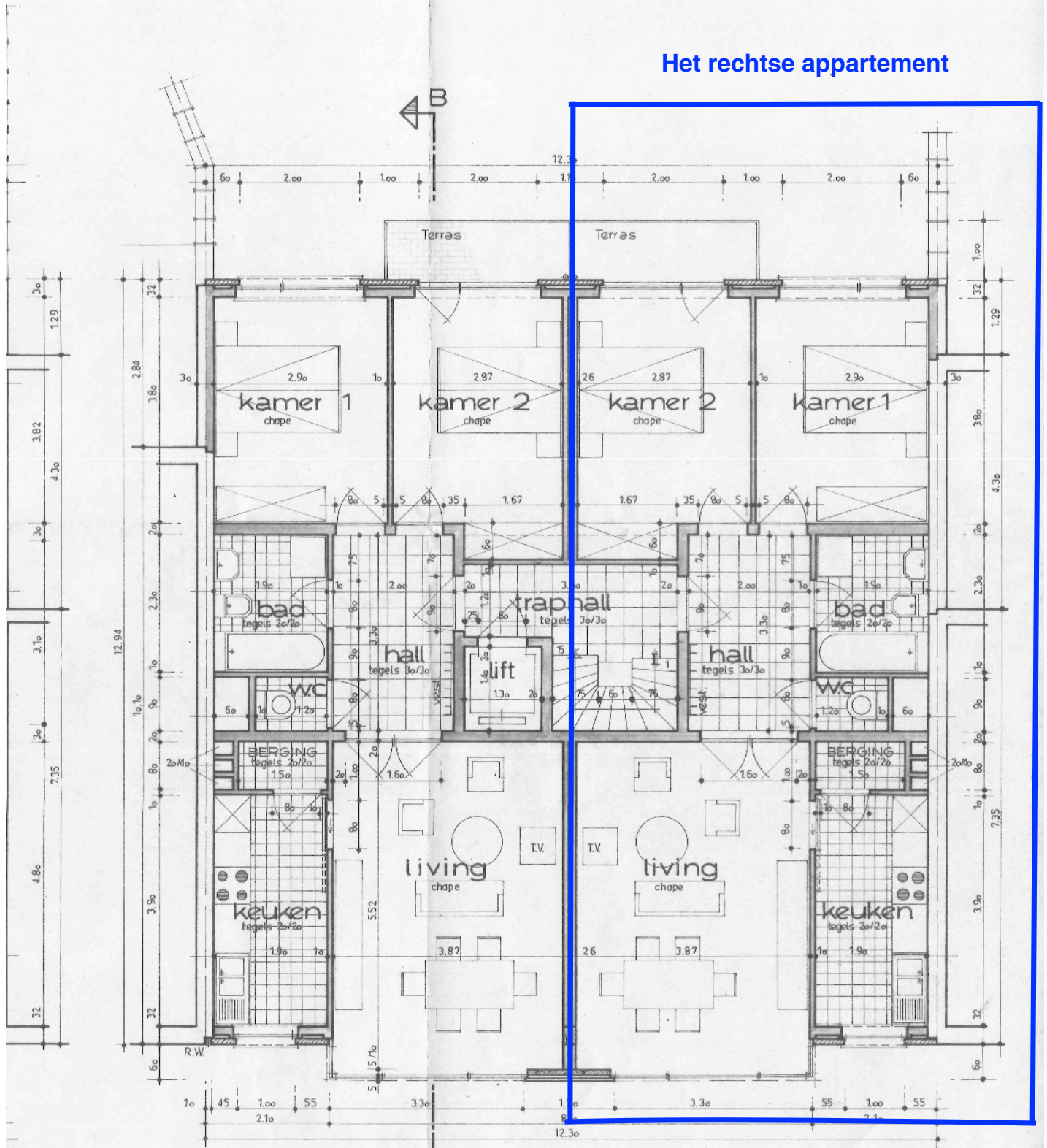


Het rechtse appartement



VERDIEPING 1+2+3

hoofdelijk

$$\begin{aligned}
 1591^{46} \\
 12.30 \times 12.94 \times 11.80 &= 1878,088 \\
 6.30 \times 1.00 \times 10.65 &= 67,095 \\
 8.70 \times 0.60 \times 11.80 &= 57,348
 \end{aligned}$$

$$\begin{aligned}
 2002,531 \\
 \times 275 \\
 \hline
 5506 \text{ f}
 \end{aligned}$$

/m 3